



Hope



Strength

Love



Your Cancer Resource Guide



Table of Contents

Arkansas Department of Health	1
Financial Assistance	3
Medication Assistance	16
Navigation.....	20
Cancer Support (Groups/Counseling)	23
Transportation	30
Survivorship.....	33
Boutique and Reconstruction	35
Additional Resources for Special Groups.....	43
Housing (Including Food Security)	46

Note: Services highlighted in blue are available for both patients with and without a cancer diagnosis.

All other services are available only for patients with a cancer diagnosis.



A pathway to hope, strength, and love.

According to the American Cancer Society (ACS), many cancer survivors and their families struggle with financial, physical, and social needs throughout their journey.

In an effort to connect survivors and their families to statewide resources, the Arkansas Department of Health (ADH) BreastCare Program and its partners, created this cancer guide. Regardless of your age, gender, or ethnicity this guide is for you.

Our intent is to help cancer survivors and their families access available resources necessary to improving lives.

We support you by connecting you to hope one partner at a time.

The Arkansas BreastCare Program



Arkansas Department of Health			
Name	Website	About	More Info on programs and services
ADH Health Units	https://www.healthy.arkansas.gov/health-units	Health services are provided at the local level through a statewide service network. Click on the link for info on your own local health unit per region in the state.	Testing for contagious diseases, screening for children's health problems, providing immunizations, teaching wellness and healthy behaviors, family planning, environmental health services, WIC, maternity services, HIV/sexually transmitted diseases, TB, women's health, vital records, and community services. Phone: 1-800-462-0599
Arkansas Breast Care Program	https://www.healthy.arkansas.gov/programs-services/topics/breastcare-program	BreastCare offers no-cost screening and diagnostic services for eligible women in Arkansas. Screening services include clinical breast exam, Pap test, and mammogram. Diagnostic services to follow-up on an abnormal mammogram, clinical breast exam or Pap test results are also available.	BreastCare's mission is to increase the rate of early detection of breast and cervical cancer and reduce the morbidity and mortality rates among women in Arkansas by lowering barriers to screening that result from lack of information, financial means, or access to quality services. Phone: 1-855-661-7830
Arkansas Cancer Registry (ACCR)	https://healthy.arkansas.gov/programs-services/topics/arkansas-cancer-registry	Your resource to publications, Arkansas Cancer Registry Query System, and the Arkansas Cancer Registry Data.	https://healthy.arkansas.gov/programs-services/topics/arkansas-cancer-registry

<p>ADH COVID Services</p>	<p>https://www.healthy.arkansas.gov/programs-services/topics/novel-coronavirus</p>	<p>The State of Arkansas is proactively responding to an outbreak of COVID-19. The agency provides and continues to update guidance and resources for Arkansans to stay healthy and make informed choices for themselves and their families with the most up-to-date info on COVID-19.</p>	<p>ADH Coronavirus Hotline: Phone: 1-800-803-7847</p> <p>Concerns Regarding Children: 1-800-743-3616</p>
<p>Be Well Arkansas Program</p>	<p>https://www.bewellarkansas.org/</p>	<p>Be Well offers counseling and resources for quitting tobacco and nicotine products. Wellness counselors help you develop a quit plan and provide free nicotine replacement therapy. Counseling is also available to help manage diabetes and high blood pressure.</p>	<p>Tobacco Counseling Services:</p> <p>Phone: 1-833-283-9355 Text: 501-588-8445</p>
<p>Mobile Mammography Vans</p>	<p>https://www.healthy.arkansas.gov/programs-services/topics/cancer-prevention-resources</p>	<p>Find information on locations of mobile mammography vans in the state https://www.healthy.arkansas.gov/programs-services/topics/cancer-prevention-resources.</p>	<p>Mercy Mobile Mammography – Fort Smith 479-314-6066</p> <p>CHI St. Vincent Mobile Mammography 501-622-4500</p> <p>UAMS Mobile Mammography 1-800-259-8794</p> <p>St. Bernard's Mobile Mammography 1-855-207-7300</p> <p>Baxter Regional Mobile Mammography 1-800-485-1745</p>

Financial Assistance



Financial Assistance			
Name	Website	About	More Info on programs and services
Arkansas Cancer Coalition (ACC)	https://www.arcancercoalition.org	The mission of the ACC is to facilitate and provide partnerships to reduce the human suffering and economic burden from cancer for citizens of Arkansas. ACC provides the Arkansas Cancer plan, trainings, and partnerships with statewide programs.	The Arkansas Cancer Coalition partners with Hope Cancer Resources to provide access to treatment with the assistance of a gas card as well as a patient transportation program. Phone: 501-404-2363 Resource Directory https://arcancercoalition.org/directory/
Allyson Whitney Foundation	https://www.allysonwhitney.org/grants/	The Allyson Whitney Foundation provides grants for people ages 16-36 who are diagnosed with a rare cancer. Covers a wide range of needs, including (but not limited to): current and residual medical bills, rent, utilities, car and health insurance premiums, IVF treatments, integrative therapies, travel expenses, and medical hair pieces. Grants range from \$500-\$1,500, and applications should be completed by an oncology social worker, doctor's office, or patient navigator.	Before contacting about a Life Interrupted Grant, please go to the grant page, review guidelines, then contact grants@allysonwhitney.org directly. Allyson Whitney Foundation P.O. Box 586 Rock Hill, NY 12775 info@allysonwhitney.org

Financial Assistance			
Name	Website	About	More Info on programs and services
Cancer Care	https://www.cancercare.org/services	Cancer Care offers limited financial assistance for cancer-related costs such as transportation, home care and childcare, and oncology social workers can help find additional resources. Also provides co-payment assistance through the CancerCare Co-Payment Assistance Foundation. (check website for current funding)	Phone: 1-800-813-4673 https://www.cancercare.org/copayfoundation#
Cancer Financial Assistance Coalition (CFAC)	https://www.cancerfac.org	CFAC is a coalition of financial assistance organizations with a goal of helping cancer patients experience better health and well-being by limiting financial challenges.	https://www.cancerfac.org
CARTI	https://www.carti.com/for-patients/patient-assistance/	CARTI offers assistance for those who qualify with housing, transportation, and financial, emotional, and nutritional counseling. In addition, CARTI offers a variety of publications and resources on cancer, treatment, and prevention.	Social Work Support Socialworkers@CARTI.com Phone: 501-906-4436 Financial Counselors Phone: 501-537-8641 M-F
Centers for Medicare and Medicaid Services	www.cms.gov		Phone: 1-800-633-4227



Financial Assistance

<p>HealthWell Foundation</p>	<p>www.healthwellfoundation.org</p>	<p>The HealthWell Foundation assists patients living with chronic and life-altering illnesses in paying their share of prescription drug copayments, deductibles, and health insurance premiums.</p>	<p>Phone: 1-800-675-8416</p>
<p>Hope Cancer Resources</p>	<p>https://hopecancerresources.org/ourstory.aspx</p>	<p>Our Story: The mission of Hope Cancer Resources is to provide compassionate, professional cancer support and education in the Northwest Arkansas region today and tomorrow. Our vision is to provide hope and enhance quality of life by expanding prevention, wellness, and comprehensive cancer support services in our region.</p>	<p>Financial assistance is provided for prescription medications, nutritional supplements, dental care, gas cards, as well as everyday living expenses to alleviate some of the financial stress a patient and their family may face.</p> <p>5835 W. Sunset Avenue Springdale, Arkansas 72762</p> <p>Phone: 479-361-5847</p>

Financial Assistance			
Fifth Season Financial	www.fifthseasonfinancial.com	Fifth Season Financial is a financial assistance resource that works to relieve the financial burden experienced by many late-stage cancer patients.	Fifth Season's program provides funds to people living with late-stage cancer by using their life insurance policy as collateral. No credit checks. No income requirements. Phone: 1-866-459-1271
Northwest Medical Center Auxiliary	www.northwesthealth.com	The Northwest Medical Center Auxiliary provides financial assistance for prescriptions, nutritional supplements, as well as everyday living expenses to alleviate some of the financial stress a patient may face.	Phone: 479-553-1000
Patient Services, Inc. (PSI)	www.patientservicesinc.org	PSI is a national non-profit organization that is committed to supporting people with expensive chronic illnesses and conditions by locating solutions with health insurance and assisting with premiums and prescription copayments to facilitate positive health and well-being.	Phone: 1-800-366-7741
Remember Betty	http://rememberbetty.com/	Remember Betty provides financial support to breast cancer patients & survivors.	Helps pay for health-care, for housing, transit, financial assistance, and medical supplies. Email: bethany@rememberbetty.com

Financial Assistance			
Susan G. Komen	https://www.komen.org	Susan G. Komen offers the Komen Treatment Assistance Program to eligible, underserved individuals who are actively undergoing breast cancer treatment.	Financial assistance available for qualifying breast cancer patients: Rent and utilities, transportation to and from treatment, food, childcare/elder care, lymphedema care and supplies: <ul style="list-style-type: none"> • Durable medical equipment • Home and Palliative care • Oral pain medication • Anti-nausea medication • Oral chemotherapy/hormone therapy • Breast cancer education • Psychosocial support • Information about local resources Phone: 1-877 GO KOMEN (465-6636) Email: helpline@komen.org https://www.komen.org/support-resources/breast-cancer-helpline/ https://www.komen.org/treatment-assistance-program/
Tigerlily Foundation	https://www.tigerlily-foundation.org/	The New Normal Program covers costs for young women currently in treatment for breast cancer, diagnosed under the age of 45, to receive complementary treatments.	The Foundation's mission is to educate, advocate for, empower, and support young women, before, during, and after breast cancer and more. Phone: 1-888-580-6253

Financial Assistance			
Twentieth Century Club of Little Rock	hopeawayfrom-home.org/	The Twentieth Century Club's lodge provides no-cost housing and meals to financially needy cancer patients traveling to Little Rock for outpatient chemotherapy and/or radiation.	Each patient may bring one caregiver with them. Healthy snacks are provided daily, and dinner is served three nights per week. 4011 Maryland Avenue Little Rock, AR 72204 Phone: 501-907-1760
U.S. Department of Health and Human Services	www.hhs.gov	The Centers for Medicare and Medicaid Services (CMS) provides health coverage to more than 100 million people through Medicare, Medicaid, the Children's Health Insurance Program, and the Health Insurance Marketplace.	www.hhs.gov
U.S. Administration on Aging	https://eldercare.acl.gov	U.S. Administration on Aging provides benefits for older adults (Eldercare Locator finds resources in your community)	Phone: 1-800-677-1116
Social Security Administration	www.ssa.gov	The Social Security Administration (SSA) is a U.S. government agency that administers social programs covering disability, retirement, and survivors' benefits.	Phone: 1-800-772-1213

Financial Assistance			
Winthrop Rockefeller Cancer Institute Auxiliary	https://cancer.uams.edu	The Winthrop P. Rockefeller Cancer Institute Auxiliary provides information, service, compassion, and hope to those whose lives are touched by cancer.	The Auxiliary supports patient assistance programs for financial assistance for prescriptions and travel expenses for cancer treatment. Phone: 501-686-8286
Reynolds Cancer Support House (RCSH)	https://reynoldscancersupporthouse.org/	The Donald W. Reynolds Cancer Support House offers a variety of programs and services in a comfortable, inviting atmosphere at no cost to the patient or family.	RCSH has funding available for emergency financial assistance (for daily living expenses and transportation to and from treatment) to support cancer patients. Phone: 479-782-6302
USBG Foundation (Helen David Relief Fund)	https://www.usbgfoundation.org/	The Helen David Relief Fund provides grant assistance to bartenders, or the spouse or child of a bartender, experiencing an event or emergency related to breast cancer or another form of cancer.	Applications for the Helen David Relief Fund are reviewed the week of the 15th of each month. Grants will be made in the form of lump sum distributions to the recipient based on their needs. Phone: 1-855-655-8724



Financial Assistance			
The Pink Fund	https://www.pinkfund.org/qualification-guidelines/	The Pink Fund provides short-term financial aid for basic living expenses (i.e. mortgage/rent, car payments & insurance, utilities).	For breast cancer patients who have lost all or a part of their income during active treatment. Payments are made directly to the patient's creditors. Phone: 1-877-234-7465
Faith Support Ministry	https://www.fsm.faithcancersupport.org/about-us	Faith Support Ministry provides help to ease the financial burdens that can occur while a family is receiving treatments.	Serve's Adults ages 18 years and older. Eligibility and requirements include the following: <ul style="list-style-type: none"> • Currently receiving cancer treatments • Within six months of being classified in remission • Within six months after death of patient • Complete and return the "Authorization for Use or Disclosure of Health Information" form. • Provide information regarding diagnosis and course of treatment • Describe the reason for requesting financial assistance • Provide current bill(s) that are being requested for payment Phone: 501-737-0927
Our Promise Cancer Resources	https://www.ourpromise.info/services	Our Promise provides financial assistance and support to cancer patients. Their mission is to help patients focus on fighting cancer and not the financial burden.	Represented counties include: Calhoun, Clark, Cleveland Conway, Dallas, Garland, Grant, Hempstead, Howard, Hot Spring, Montgomery, Nevada, Ouachita, Perry, Pike, Polk, Saline, Sebastian, Scott, Sevier, Yell. Phone: 501-760-8060

Financial Assistance			
Pan Foundation	https://www.panfoundation.org/	Pan Foundation provides financial and medication assistance	Help underinsured people with life-threatening, chronic, and rare diseases get the medications and treatments they need by assisting with their out-of-pocket costs and advocating for improved access and affordability. Phone: 1-866-316-7263
Patient Advocate Foundation	http://www.patientadvocate.org	Patient Advocate Foundation assists with access to care and treatment recommended by their doctor.	Case Management Services Co-Pay Relief Program Financial Aid Funds Apply for a Scholarship Phone: 1-800-532-5274
Rofeh Cholim Cancer Society (RCCS)	https://www.rccs-cancer.org	RCCS provides emergency assistance for insurance deductibles and copays.	RCCS, is a recognized 501(c)3 organization, provides an array of services for cancer-stricken patients in need. Phone: 718-722-2002
Patient Services, Inc	https://www.patientservicesinc.org	Patient Services, Inc provides funding for specific diseases and offers financial assistance to eligible patients once available.	Programs may include assistance types such as copayment, premium, ancillary services, infusion and nursing services, or travel. Phone: 1-800-366-7741

Financial Assistance			
Family Reach Foundation	https://family-reach.org/ftp/	Family Reach Foundation has a financial treatment program that offers support services to help you overcome the financial side effects of your cancer diagnosis.	To qualify: <ul style="list-style-type: none"> • Have a cancer diagnosis • Be in active treatment or have completed treatment within 1 year • Receive treatment at a hospital within the 50 states, Washington D.C., Puerto Rico and U.S. territories • Be represented by a healthcare professional who can communicate with Family Reach on your behalf. Phone: 857-233-2764
Lois Merrill Foundation	https://www.thelmf.com/	Lois Merrill Foundations helps people affected by carcinoid and other rare cancers.	Funding research for new treatments, providing financial support for patients and their families and promoting awareness and education. Grants accepted by The Lois Merrill Foundation through April 17th.
CANCER CARD XCHANGE FREE GIFT CARDS	https://www.cancercardexchange.org/	If you are looking for free money for cancer patients, then check out this free help for cancer patients. In the United States, The Cancer Card Xchange gives free gift cards to cancer patients to use for gas, restaurants, shopping, movies, and more.	https://www.cancercardexchange.org/

Medical Assistance



Medical Assistance			
Name	Website	About	More Info on programs and services
NeedyMeds	http://www.needymeds.org	NeedyMeds provides education and Medication Assistance.	Connects people to programs that will help them afford their medications and other healthcare costs. Educates and empowers those seeking affordable healthcare. Phone: 1-800-503-6897
Medication RX Outreach	https://rxoutreach.org/	Medication RX Outreach is a nonprofit organization that provides affordable medicines for those who qualify financially.	Provides 90-day and 180-day supplies of prescription medications, regardless of the number of pills your doctor prescribes per day for most medications. Phone: 1-888-796-1234
Remember Betty	http://rememberbetty.com/	Remember Betty provides financial support to breast cancer patients & survivors.	Helps pay for health-care, housing, transit, financial assistance, and medical supplies. bethany@rememberbetty.com
Pan Foundation	https://www.pan-foundation.org/	Pan Foundation provides financial and medical assistance.	Helps underinsured people with life-threatening, chronic, and rare diseases get the medications and treatments they need by assisting with their out-of-pocket costs and advocating for improved access and affordability. Phone: 1-866-316-7263

Medical Assistance			
PhRMA's Medicine Assistance Tool	https://medicineassistancetool.org/	Pharmaceutical Research and Manufacturers of America (PhRMA)'s Medicine Assistance Tool (MAT) is an on-line tool designed to help patient, caregivers, and providers.	The MAT is designed to help anyone learn about the resources available in the biopharmaceutical industry, through an online search engine. Phone: 1-888-477-2669
The Assistance Fund	https://tafcares.org/	The Assistance Fund helps with copays for medication.	Help break down financial barriers to medical treatment by providing direct financial assistance. Phone: 1-855-845-3663
Rx Outreach	http://rxoutreach.org	Rx Outreach helps lower the cost of medications to make them affordable.	Mail order pharmacy ships medications directly to the provider's office or our patients' homes. Phone: 1-888-796-1234
Patient Assistance Connections	http://www.sanofi-patientconnection.com	Patient Assistance Connections provides certain Sanofi prescription medications at no cost if you meet program eligibility requirements.	For a listing of Sanofi products covered under the Sanofi Patient Connection program click below. https://www.sanofi-patientconnection.com/medications-available Phone: 1-888-847-4877



Navigation



Navigation			
Name	Website	About	More Info on programs and services
AuntBertha	https://www.find-help.org/	AuntBertha is a directory that helps you find resources for food assistance, help with paying bills, and other free or reduced cost programs, including new assistance programs in the COVID-19 pandemic.	A place to find resources and assistance for a variety of needs listed by zip codes. https://www.findhelp.org/
CancerCare	www.cancercares.org	CancerCare provides financial assistance, navigation, and support services.	Offer limited financial assistance for cancer-related costs and co-pays and support services. Phone: 1-800-813-4673
Center for Arkansas Legal Services-Little Rock and Pulaski County		The Center for Arkansas Legal Services-Little Rock and Pulaski County helps low income families, including the homeless, with free legal aid. Lawyers can help with eviction matters, resolve security deposit disputes, and address unsafe or unfair housing, such as low-income apartments. Landlord and tenant mediation may be offered.	1300 West 6th Street Little Rock, AR 72201 Phone: 1-800-950-5817

Navigation			
Rofeh Cholim Cancer Society (RCCS)	https://www.rccscancer.org/	RCCS provides an array of services for cancer-stricken patients in need.	RCCS is at patient's side to help explore the most appropriate physician and treatment for each individual diagnosis. Providing linkages financial and quality of life support resources. Phone: 718-722-2002
Washington Regional Cancer Support Home	https://www.wregional.com/main/cancer-support-home	The Cancer Support Home (CSH) offers support programs and services at no cost to their clients.	CSH provides individualized guidance to women recently diagnosed with breast cancer. Phone: 479-404-2162
Arkansas Cancer Coalition	https://arcancercoalition.org/	The Arkansas Cancer Coalition provides an online registry of patient resources related to cancer screening and treatment.	https://arcancercoalition.org/directory Including: Cancer Support Group, Financial Assistance, Housing/Lodging, Medication, Transportation, Utilities, Wigs, Home Care, Medical Supplies.
New Outlook Cancer Recovery Program	https://www.chistvincent.com/clinical-services/cancer-care/st-vincent-oncology-services-and-new-outlook	The Cancer Recovery Program at CHI St. Vincent helps in dealing with the effects of the disease and its treatment.	Support group meets at CHI St. Vincent Sherwood, AR from 12pm-1pm <ul style="list-style-type: none"> • Wigs and head scarves • "You Look Marvelous" Makeover Classes • Support groups for cancer survivors and their families • Information and referral services • Navigation to supportive services • Private professional counseling St Vincent Sherwood Rehabilitation Hospital Phone: 501-834-1800

Cancer Support Groups and Counseling



CANCER SUPPORT (Groups/Counseling)			
Name	Website	About	More Info on programs and services
Cancer+ Careers	https://www.cancerandcareers.org/en/about-us/contact	Mission: Cancer and Careers empowers and educates people with cancer to thrive in their workplace, by providing expert advice, interactive tools, and educational events.	Send us an email @ cancerandcareers@cew.org Phone: 646-929-8032
CancerCare	www.cancercares.org	CancerCare provides financial assistance, navigation, and support services.	CancerCare provides telephone, online and face-to-face counseling, support groups, education, publications, and financial and co-payment assistance. Offers limited financial assistance for cancer-related costs and co-pays and support services.
Camp Kesem Free Summer Camp	https://www.campkesem.org/	Camp Kesem is a nationwide community, driven by passionate college student leaders, that supports children through and beyond their parent's cancer. We serve children who have lost a parent to cancer, have a parent undergoing cancer treatment, or whose parent is a cancer survivor.	Free Summer Camp: https://www.campkesem.org/

CANCER SUPPORT (Groups/Counseling)			
Cancer Kid Camps provided by Ped-Onco Resource Center		Cancer Kid Camps is a summer camp for young cancer patients sponsored by Camp Quality.	http://www.ped-onc.org/cfissues/camps.html Camps in Arkansas: Camp Alldersgate One-week residential camp for children aged 6 to 16 with cancer. Free www.campalldersgate.net Camp Quality Arkansas www.campqualityusa.org/ar
New Outlook Cancer Recovery Program	https://www.chistvincent.com/clinical-services/cancer-care/st-vincent-oncology-services-and-new-outlook	The Cancer Recovery Program at CHI St. Vincent provides assistance in dealing with the effects of the disease and its treatment.	Support group meets at CHI St. Vincent Sherwood, AR from 12pm- 1pm <ul style="list-style-type: none"> • Wigs and head scarves • “You Look Marvelous” Makeover Classes • Support groups for cancer survivors and their families • Information and referral services • Navigation to supportive services • Private professional counseling St Vincent Sherwood Rehabilitation Hospital: Phone: 501-834-1800

CANCER SUPPORT (Groups/Counseling)

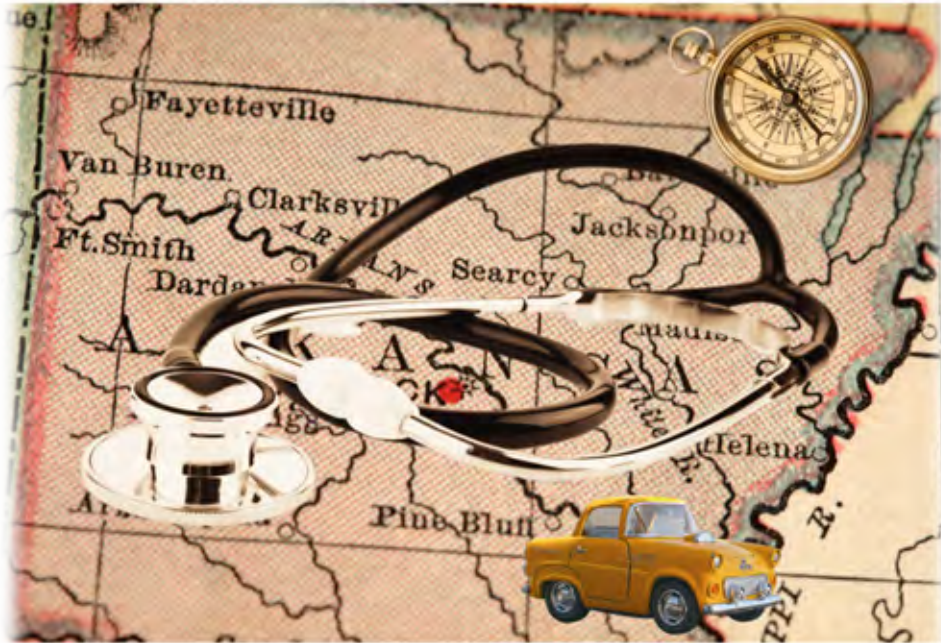
<p>Hope Cancer Resources</p>	<p>https://hopecancerresources.org/ourstory.aspx</p>	<p>Our Story: The mission of Hope Cancer Resources is to provide compassionate, professional cancer support and education in the Northwest Arkansas region today and tomorrow. Our vision is to provide hope and enhance quality of life by expanding prevention, wellness, and comprehensive cancer support services in our region.</p>	<p>Hope Cancer Resources employs highly professional staff which includes licensed oncology social workers, a Spanish interpreter, two certified tobacco treatment specialists, one who is also a certified personal trainer and certified exercise specialist. We provide transportation to take patients to every cancer treatment as needed as well as education to help a patient during and after their treatment. Financial assistance is provided for prescription medications, nutritional supplements, dental care, gas cards, as well as everyday living expenses to alleviate some of the financial stress a patient and their family may face. Believing emotional support is essential for healthy survivorship, we offer counseling services ranging from a kind word or listening ear to one-on-one, couples or family counseling sessions with a licensed mental health professional. Hope Cancer Resources also provides emotional support in group settings.</p> <p>5835 W. Sunset Avenue Springdale, Arkansas 72762</p> <p>Phone: 479-361-5847</p>
<p>Hope House</p>	<p>https://www.shcofc.org/hope-house-a-community-of-hope/</p>	<p>The Hope House is a community of Hope through Sylvan Hills Church of Christ.</p>	<p>Cancer patients and caregivers meet for encouragement and sharing on the 2nd Tuesday evening of each month from 7-8:30 pm in the Family Life Center Reception Room, Sylvan Hills Church of Christ, Little Rock, AR.</p> <p>Phone: 501-835-4141</p>



CANCER SUPPORT (Groups/Counseling)			
Make-a-Wish Arkansas Chapter	https://makeawish-harkansas.weebly.com/	The Make-A-Wish Foundation is a non-profit organization that grants wishes to 2 1/2-18-year-old children, who have life threatening illnesses.	Located:320 Executive Court, Suite 101 Little Rock, AR 72205 Phone: 501-376-9474 Fax: 501-372-1290
Support Connection	https://supportconnection.org/	Support Connection provides emotional, social, and educational support to women, their families and friends affected by breast and ovarian cancer.	There are professional peer counselors on our staff who are cancer survivors themselves. They help people all over the country via our toll-free services although our office is in Yorktown Heights, NY. Phone: 914-962-6402 or 1-800-532-4290
Young Survival Coalition (YSC)	https://www.young-survival.org/	YSC is dedicated to the critical issues unique to young women who are diagnosed with breast cancer.	YSC offers resources, connections, and outreach so women feel supported, empowered, and hopeful. https://www.facebook.com/youngsurvivalcoalition
Sharsheret	https://sharsheret.org/	Sharsheret helps to improve the lives of Jewish women and families living with or at increased genetic risk for breast or ovarian cancer.	Provides personalized support and saves lives through educational outreach. https://www.facebook.com/sharsheret.org/9

CANCER SUPPORT (Groups/Counseling)			
Peitz Cancer Support House (PCSH)	https://www.baxterregional.org/foundation/community-houses/peitz-cancer-support-house/	PCSH provides free support group meetings and other activities are held at various times of the day and evening.	Staff members or volunteers are available weekdays during regular business hours to answer questions about events and activities. Some of the support services include: one on one sessions, resource library, care packages, educational supplies, wigs and scarfs, mastectomy/lumpectomy supplies, educational seminars, exercise programs and tobacco cessation support. Baxter Regional Medical Center, Mountain Home, AR Phone: 870-508-2273
Together Teens & 20s Powered by St. Jude Children's Hospital	https://together.stjude.org/en-us/teen-sand20s.html	Cancer may affect your life, but it doesn't have to define you.	Browse Topics like: <ul style="list-style-type: none"> • Keeping up with school • Adulting with Cancer • How Treatments may affect you • Your emotions and relationships • Life Stories
Reynolds Cancer Support House (RCSH)	https://reynoldscancersupporthouse.org/services-support/	The Donald W. Reynolds Cancer Support House offers a variety of programs and services in a comfortable, inviting atmosphere at no cost to the patient or family.	RCSH offer cancer patients the opportunity to interact, comfort, and encourage one another, and provide emotional support after diagnosis and during the rigors of cancer treatment. They have a wide variety of Support Groups and Creative Classes for Men, Women and Adolescents. Fort Smith, AR Phone: 479-782-6302

Transportation



Transportation			
Name	Website	About	More Info on programs and services
Air Charity Network	http://aircharitynetwork.org/about-us/	Air Charity Network serves all 50 states and provides free flights to people in need of medical treatment. To be automatically routed to a specific region, call toll-free 1-877-621-7177 or visit website for regional links.	Air Charity Network 8864 Airport Blvd, Leesburg, FL, Phone: 1-877-621-7177
CARTI	https://www.carti.com/for-patients/patient-assistance/	Areas of assistance for those who qualify include housing, transportation, and financial, emotional, and nutritional counseling. In addition, CARTI offers a variety of publications and resources on cancer, treatment, and prevention.	Social Work Support Socialworkers@CARTI.com Phone: 501-906-4436 Charity Care Applications Financial Counselors Phone: 501-537-8641 M-F
Corporate Angel Network	https://www.corpangelnetwork.org/	The Corporate Angel Network's mission is to fly cancer patients (both children and adults) to treatment at no cost to them on empty seats – on both private and corporate planes – with patients who need the rides.	Participation in Corporate Angel Network is open to all cancer patients, bone marrow donors and recipients, and stem cell donors and recipients who are ambulatory and not in need of medical support while traveling. Eligibility is not based on financial need, and patients may travel as often as necessary. Phone: 914-328-1313

Transportation

Mercy Medical Angels	https://www.mercymedical.org/request-assistance	<p>Mercy Medical Angels is a non-emergency ground transportation program provides financially qualifying patients with non-local medical- related treatment traveling more than 50 miles from your home. The typical trip does not exceed 300 miles.</p>	<p>To speak with a CancerCare social worker to complete a brief interview call the number below.</p> <p>Phone: 1-800-813-HOPE (4673)</p> <p>https://www.facebook.com/angelwheestohealing</p>
Patient Advocate Foundation (PAF)	http://www.patientadvocate.org	<p>The Patient Advocate Foundation helps patients access care and treatment recommended by their doctor.</p>	<p>Services provided include:</p> <ul style="list-style-type: none"> • Case Management Services • Co-Pay Relief Program • Financial Aid Funds Apply for a Scholarship <p>Phone: 1-800-532-5274</p>
Disabled Veterans (DAV)	https://www.dav.org/veterans/i-need-a-ride/	<p>DAV operates a fleet of vehicles around the country to provide free transportation to VA medical facilities for injured and ill veterans. from medical facilities.</p>	<p>Phone: 1-877-426-2838</p>
Our Promise Cancer Resources	https://www.ourpromise.info/services	<p>Our Promise provides financial assistance and support to cancer patients. Their mission is to help patients focus on fighting cancer and not the financial burden.</p>	<p>Helps non-local patients focus on fighting cancer rather than the cost of gas.</p> <p>Phone: 501-760-8060</p>

Survivorship



Survivorship			
Name	Website	About	More Info on programs and services
Remember Betty	http://rememberbetty.com/	Remember Betty provides financial support to breast cancer patients & survivors.	Helps pay for: <ul style="list-style-type: none"> • Healthcare • Housing • Transit • Financial assistance • Medical supplies
Young Survival Coalition (YSC)	https://www.young-survival.org/	YSC is dedicated to the critical issues unique to young women who are diagnosed with breast cancer.	YSC offers resources, connections, and outreach so women feel supported, empowered, and hopeful. https://www.facebook.com/youngsurvivalcoalition
Support Connection	https://supportconnection.org/	Support Connection provides emotional, social, and educational support to women, their families and friends affected by breast and ovarian cancer.	There are professional peer counselors on our staff who are cancer survivors themselves. They help people all over the country via our toll-free services although our office is in Yorktown Heights, NY. Phone: 1-800-532-4290
Sharsheret	https://sharsheret.org/	Sharsheret improves the lives of Jewish women and families living with or at increased genetic risk for breast or ovarian cancer.	Provide personalized support and saves lives through educational outreach. https://www.facebook.com/sharsheret.org/

Boutique and Reconstruction



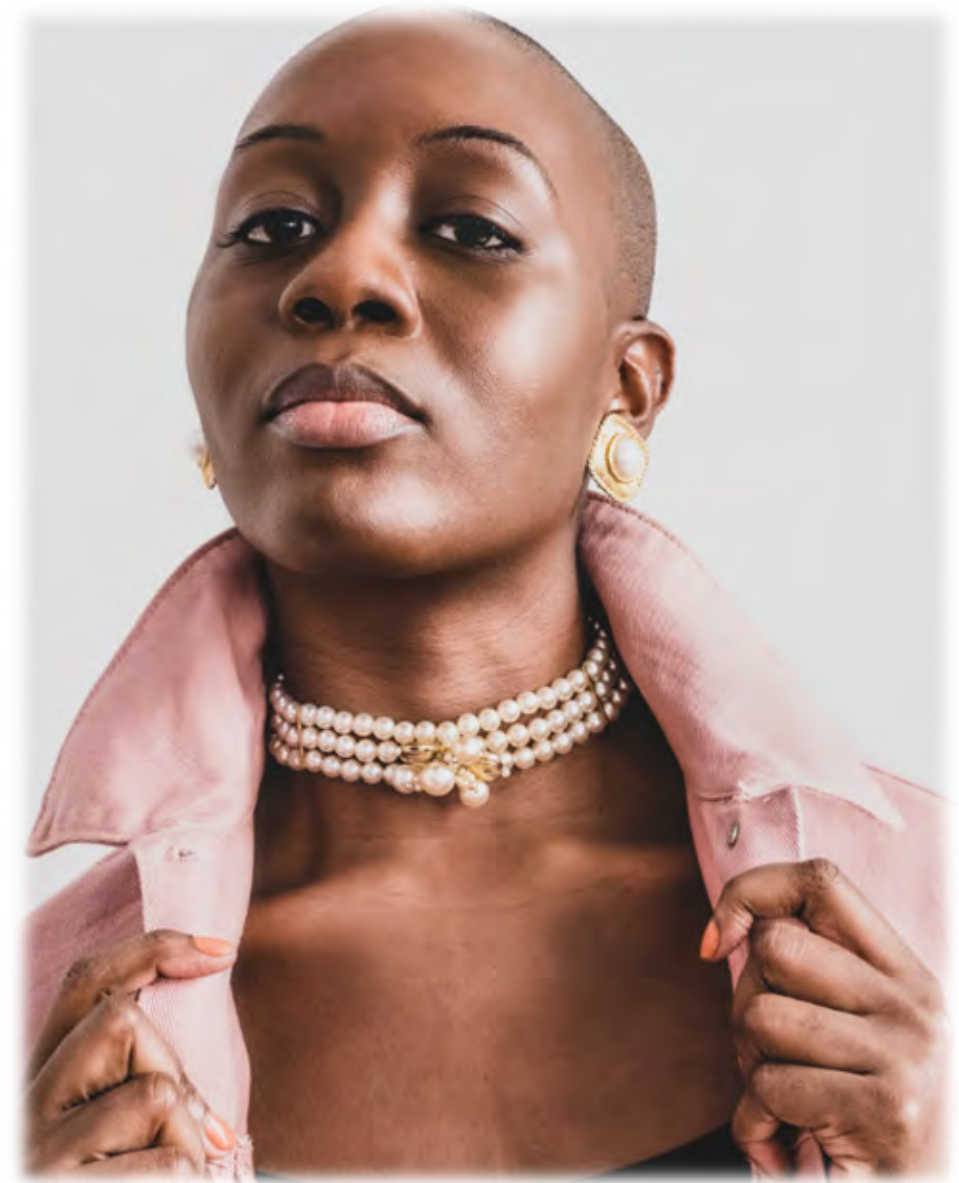
Breast Reconstruction			
Name	Website	About	More Info on programs and services
Alliance in Reconstructive Surgery (AIRS) Foundation	https://airsfoundation.org	The AiRS Foundation offers women who have undergone a mastectomy the opportunity to receive a grant to pay for reconstructive surgery.	This program covers all US residents and territories. https://airsfoundation.org/apply-for-grant/ Check eligibility info on website. Phone: 1-866-376-6153

BOUTIQUE			
Name	Website	About	More Info on programs and services
Arkansas Cancer Coalition	https://arcancercoalition.org/	Arkansas Cancer Coalition provides an online registry of patient resources related to Cancer Screening and Treatment.	https://arcancercoalition.org/directory Including: Cancer Support Group, Financial Assistance, Housing/Lodging, Medication, Transportation, Utilities, Wigs, Home Care, Medical Supplies. Phone: 501-404-2363
American Cancer Society's Look Good Feel Better Program	https://www.headcovers.com/wigs/	The American Cancer Society is one great resource that provides free wigs for adult women who financially qualify and are suffering from hair loss due to cancer treatments.	https://www.headcovers.com/wigs/ Cancer patients can get free makeup and cosmetics. The Look Good Feel Better program through the American Cancer Society gives free makeup to cancer patients. The Look Good Feel Better program is a 2-hour, hands-on workshop that gives cancer patients tips for hair loss, nail care, makeup, clothing and more.

BOUTIQUE			
Awesome Breastforms	https://awesomebreastforms.org/index.php/how-to-order-awesome-breastforms-2/	Awesome Breastforms are created by a group of women who have come together for the single purpose of crocheting and knitting handmade prosthetic breast forms for women who have had breast surgery, including mastectomy, lumpectomy, explant surgery and women with developmental conditions. Awesome Breastforms are washable and easy to care for.	Our breastforms are completely free to any woman who has had a mastectomy or lumpectomy. Volunteers pay the cost of yarn, lovingly give their time to produce the forms and then pay for all shipping expenses.
GOOD WISHES FREE HEAD WRAPS	http://www.goodwishesscarves.org/	For those going through chemotherapy, you can get a free head wrap from Good Wishes. These chemotherapy freebies delivery can take 4-6 weeks.	Mailing Address: PO BOX 1968 North Bend, WA 98045 USA Phone: 1-888-778-5998 Email: info@goodwishesscarves.org
Knitted Knockers	https://www.knittedknockers.org/	Knitted Knockers are special handmade breast prosthesis for women who have undergone mastectomies or other procedures to the breast. Our special volunteer knitters provide these FREE to those requesting them.	Knitted Knockers 1780 Iowa St. Bellingham, WA 98229 contact@knittedknockers.org

BOUTIQUE			
New Outlook Cancer Recovery Program	https://www.chistvincent.com/clinical-services/cancer-care/st-vincent-oncology-services-and-new-outlook	The Cancer Recovery Program at CHI St. Vincent aids in dealing with the effects of the disease and its treatment.	Support group meets at CHI St. Vincent Sherwood, AR from 12pm-1pm <ul style="list-style-type: none"> • Wigs and head scarves • “You Look Marvelous” Makeover Classes • Support groups for cancer survivors and their families • Information and referral services • Navigation to supportive services. • Private professional counseling <p>St Vincent Sherwood Rehabilitation Hospital Phone: 501-834-1800</p>

BOUTIQUE			
Washington Regional Cancer Support Home (WRCSH)	https://www.wregional.com/main/cancer-support-home	The Washington Regional Cancer Support Home offers support programs and services at no cost to their clients.	WRCH's boutique supports cancer patients with wigs, hats, scarves; and post mastectomy supplies, including bras and breast forms. They offer a variety of sizes and styles to meet the needs of their clients. Phone: 479-404-2162
Women's Pavilion Rose Program	https://www.mywomenspavilion.com/	Through the Rose Program, women who are uninsured or under- insured are offered gently used and donated mastectomy bras, prostheses, wigs, and turbans at no cost.	https://www.mywomenspavilion.com/ Phone: 479-936-7050
Peitz Cancer Support House (PCSH)	https://www.baxterregional.org/foundation/community-houses/peitz-cancer-support-house/	The Peitz Cancer Support House provides a comprehensive support services program for cancer patients and their families.	Peitz Cancer Support House has wig bank, hats, turbans, and scarves available for patient use. PCSH also have a prosthesis room that provides a private setting for patients to select supplies that best suits their need. Phone: 870-508-2273



BOUTIQUE			
Good Wishes Head Scarf	http://www.goodwishesscarves.org/	Good Wishes Head Scarf provides one free It's a Wrap® or Good Wishes scarf to anyone experiencing a loss or thinning of hair because of illness or treatment.	Simply click on the link (Request a Wrap) at the top of their page, choose up to three fabrics that suit the recipient's taste and style. Wrap or scarf is sent directly to individuals along with the support and good wishes of all the staff. Phone: 1-888-778-5998
Reynolds Cancer Support House (RCSH)	https://reynoldscancersupporthouse.org/services-support/	The Donald W. Reynolds Cancer Support House offers a variety of programs and services in a comfortable, inviting atmosphere at no cost to the patient or family.	RCSH provides salon services at no cost to their patients. These include wigs, hats, scarves, turban, and miracle sets (Mary Kay Cosmetic). Phone: 479-782-6302
UAMS Cancer Institute Auxiliary, Kristen J. Madsen Wig Boutique		Any UAMS cancer patient who has lost her hair due to treatment may receive one free wig and three hats. Men's hats are also available. No appointment is necessary.	Phone: 501-686-5578

Resources for Special Groups



ADDITIONAL RESOURCES FOR SPECIAL GROUPS

Name	Website	About	More Info on programs and services
Arkansas Coalition of Marshallese (ACOM)	https://www.arkansasmarshalllese.org/	ACOM is dedicated to improving the lives of the Marshallese community.	ACOM works hard to improve the health of the Marshallese community. They focus on diabetes prevention, access to healthcare and healthy lifestyle education. They offer driver's license preparation, and financial literacy classes, and provide adoption counseling and services. Help support the community by responding to requests of food, cleanings supplies, mask, and glove requests. Email: info@arkansasmarshalllese.org
Hispanic Women's Organization of Arkansas	https://www.hwoa.org/	This organization provides advance educational opportunities for Hispanic women and their families in becoming active participants in the community.	Helps with acquiring marketable job skills, learning to navigate the system to find opportunities for self-development, education, and employment. Phone: 479-751-9494 Email: hwoa@hwoa.org
Consulate of Mexico	https://consulmex.sre.gob.mx/littlerock/	The consulate is focused around assisting Mexican citizens living in the State. Its main functions are to protect and defend the rights and interests of Mexicans and encourage stronger ties.	Supports the community with immigration services and other services including physical and mental health care, education services, financial education, and wealth management. Phone: 501-372- 6933 Email: consulmexlir@comcast.net

ADDITIONAL RESOURCES FOR SPECIAL GROUPS

Name	Website	About	More Info on programs and services
El Zocalo	http://www.zocalocenter.com/	El Zocalo Immigrant is a resource center that works to promotes dignified life for immigrants in the state and connecting individuals and families with services.	Assists with health, education, financial literacy, protections and building bridges. Including practical English language, skills for life in the United States, parenting, financial, health, civic literacy classes as well as assisting with food, clothing, and basic needs. Phone: 501-301-HOLA (4652) Email: LRimmigrantcenter@gmail.com
USBG National Foundation Charity The Helen David Relief Fund	https://www.usbgfoundation.org/	The Helen David Relief Fund provides grant assistance to bartenders, or the spouse or child of a bartender, experiencing an event or emergency related to breast cancer or another form of cancer.	Applications are reviewed the week of the 15th of each month. Grants will be made in the form of lump sum distributions to the recipient based on their needs. Phone: 1-855-655-8724

Housing and Food



HOUSING (Including Food Security)			
Name	Website	About	More Info on programs and services
American Cancer Society (ACS) Hope Lodge Program	https://www.cancer.org/treatment/support-programs-and-services/patient-lodging/hope-lodge.html	ACS' Hope Lodge Program offers families a free place to stay when cancer treatment is given far from home.	Phone 1-800-227-2345
Helping Hand of Greater Little Rock	https://www.needhelp-payingbills.com/html/helping_hand_of_little_rock_fi.html	<p>While resources are limited, Helping Hand of Little Rock administers a crisis center for clients who need referrals or support. There may be rare cases in which they provide direct financial aid, but most of the aid available will be in the form of referrals to other local non-profits and charity organizations.</p> <p>Trained volunteers first meet with clients to evaluate the situation and then establish plans to make payments directly to their utility providers, landlord, agencies and/or retailers.</p>	<p>Any appointments taken and money paid out will be on a first-come, first-served basis, and clients must provide all of the requisite documentation (such as income and assets) to be eligible for financial assistance.</p> <p>Helping Hand manages a list of pantries and food banks, some of which are run by the Christian ministry. The centers provide free food to individuals and families who struggle to afford the cost of groceries.</p> <p>In addition, Helping Hand of Little Rock oversees a large, well-organized thrift shop.</p> <p>Helping Hand of Greater Little Rock Primary location - 1601 Marshal Street Little Rock, Arkansas 72206</p> <p>Phone: 501-372-4388</p>

HOUSING (Including Food Security)			
Home for Healing Little Rock	https://homeforhealing.org/	Home for Healing has 15 rooms. Ten rooms are for cancer patients receiving outpatient cancer treatments and their caregiver. Five rooms are for parents of infants in the NICU.	Each room can accommodate two guests and has a full bath, television (excluding the NICU rooms), a microwave, and small refrigerator. All rooms have access to WiFi. Bed linens and towels are supplied, but you may bring your own if you prefer. Toilet paper is supplied. There are two full kitchens for the cancer patient rooms and one for the NICU rooms. There are also two full laundry rooms with detergent and dryer sheets provided. Ronnie Fehrenbach House Operations Manager 4300 West Markham Street Little Rock, AR 72205 Phone: 501-978-2900

HOUSING (Including Food Security)			
Fisher House Foundation	https://www.fisherhouse.org/	Fisher House Foundation operates a network of comfort homes where military and veterans' families can stay at no cost while a loved one is receiving treatment. These homes are located at military and VA medical centers around the world.	Also operates the Hero Miles program, using donated frequent flyer miles to bring family members to the bedside of ill service members as well as the Hotels for Heroes program using donated hotel points to allow family members to stay at hotels. Fisher House™ Foundation, Inc. 12300 Twinbrook Pkwy, Suite 410 · Rockville, MD 20852 Phone: 1-888-294-8560
Little Rock Housing Authority		Little Rock Housing Authority helps Arkansans learn about government housing assistance, including section 8 housing vouchers, low-income programs, and more. Case workers can help people apply for emergency rent help and eviction prevention. Other resources include Low Income Home Energy Assistance Program, food stamps, WIC, and referrals.	Location - 100 Arch Street Little Rock, AR 72201 Phone: 501-340-4821
Lifeline Program	https://www.lifelinesupport.org/	Lifeline Program helps families in need obtain voice and broadband connectivity services at a lower monthly cost.	Helps pay for phone and internet service. Lifeline is available to eligible low-income subscribers in every state, territory, commonwealth, and on tribal lands. Phone: 1-800-234-9473

HOUSING (Including Food Security)			
Our Promise Cancer Resources	https://www.ourpromise.info/services	Our Promise provides financial assistance and support to cancer patients. Their mission is to help patients focus on fighting cancer and not the financial burden.	They help cover household bills. Represented counties include: Garland, Clark, Calhoun, Conway, Cleveland, Dallas, Grant, Hempstead, Hot Spring, Howard, Montgomery, Nevada, Ouachita, Perry, Pike, Polk, Saline, Sebastian, Scott, Sevier, Yell. Phone: 501-760-8060
Goodness Village	https://www.goodnessvillage.org/	Goodness Village provides affordable apartment housing in Little Rock, Arkansas for patients and their families who require outpatient medical treatment.	Affordable apartments for families who need to stay days, weeks, or months while undergoing medical care. Each apartment is fully furnished with what you need so you can live comfortably. Phone: 501-530-0095
Meals on Wheels	https://www.mealsonwheelsamerica.org/	Meals on Wheels is a program for people who are disabled, homebound, or elderly. Volunteers deliver ready-to-eat meals to your home. Costs or fees vary depending on your age and where you live.	Phone: 1-888-998-6325

HOUSING (Including Food Security)			
Saint Francis House-The Benefit Bank of Arkansas		Saint Francis House provides a referral helpline for low income, unemployed, and seniors. They also run the Homeless Shelter for Veterans, which is administered thru the VA Drop in House. Clients can get information on loan products, subsidized rental units, and other aid.	2701 South Elm Street Little Rock, AR 72204 Phone 501-664-5036
Utilities Low-Income Home Energy Assistance Program (LIHEAP)		LIHEAP may be able to assist with bill payments, an energy crisis, and weatherization and energy-related home repairs. To apply, call the National Energy Assistance Referral (NEAR) project toll-free at the number provided to get the contact information for your local LIHEAP office.	330 C St. SW, Mary E. Switzer Building, 5th Floor, Washington, DC, 20201 Phone: 1-866-674-6327
Washington Regional Cancer Support Home (WRCSH)	https://www.wregional.com/main/cancer-support-home	WRCSH offers support programs and services at no cost to their clients.	Cancer Support Home provides overnight lodging for patients traveling into Northwest Arkansas for cancer related appointments and treatments. They also provide utility and mortgage assistance for those who qualify. Phone: 479-404-2162



HOUSING (Including Food Security)			
Central Arkansas Development Council (CADC)	https://www.cadc.com/utility-assistance	CADC assists people with the Low-Income Home Energy Assistance Program (LIHEAP) assists eligible low-income households with their heating and cooling energy costs.	Persons receiving LIHEAP are connected to family development resources, which provides a link to long-term resources to help families become self-reliant. Phone: 501-326-6229
Helping Hand of Greater Little Rock	https://www.lrhelphand.com/mission-statement.html	Helps the poor and needy of the Central Arkansas community by providing assistance for human needs (groceries, clothing, medical supplies, and limited financial assistance for rent and utilities).	There are several helping hands non-profit organization located in various locations across the state. For example: http://www.helpinghandsnwa.org/services.htm https://www.facebook.com/HelpingHandsCaringHeart/?rf=167472989936059
Watershed Human and Community Development, Inc.	https://thewatershed1.com/	Watershed helps those in financial crisis. We assist families and individuals experiencing financial emergency, shut-off notices, or other hardships.	Services provided include: Children and family services/ family resource, working to find work and disaster relief services. Phone: 501-378-0176
Family Promise Shelter Services	https://familypromise.org/	Family Promise provides safe shelter, and support services for the families with children under age 18, supporting their basic needs while they work to become self-sufficient.	This program provides: <ul style="list-style-type: none"> • Shelter • Food • Showers • Laundry facilities • Transportation Phone: 908-273-1100

HOUSING (Including Food Security)			
Next Step		Next Step distributes food to local households in need. This service is designed to supply nutrition to individuals and families experiencing food insecurity.	Provide food delivery and food pantry services to anyone in need in all ages individuals families. Must live in Little Rock or in North Little Rock in Arkansas. Phone: 501-350-4170
Entergy Arkansas Low-income Solution's Program	https://www.energy-arkansas.com/your-home/save_money/ee/low-income/	The Low-Income Solutions program helps low-income households become more comfortable, safe and energy efficient through home weatherization and health and safety upgrades at no additional cost.	This program is designed to benefit Low-Income Home Energy Assistance Program- eligible households and/or Entergy customers age 65 or older. Phone: 1-800-368-3749 or 1-800-ENTERGY
Double Up Food Bucks	https://arkansasobesity.org/initiatives/dufb.html	Supplemental Nutrition Assistance Program (SNAP) recipients receive a one-to- one-dollar match to purchase locally grown produce at many farmers markets and farm stands across Arkansas. In addition, they will receive free nutrition and cooking education.	The Double Up Food Bucks program is also available in select grocery stores and farmers markets. There is a full list of participating locations on the website. Phone 501-712-2002

HOUSING (Including Food Security)			
Arkansas Hunger Alliance	https://arhungeralliance.org/	Flagship nutrition education programs by the Arkansas Hunger Relief Alliance are Cooking Matters (CM) and Cooking Matters at the Store (CM@S).	CM provides six-session hands-on food skills education classes (two hours once a week for six weeks). Participants learn how to plan and budget for healthy, affordable, and delicious meals for their families. Stipends may be available for courses that primarily serve caregivers of young children. All course graduates are provided with take-home cooking equipment provided by the Arkansas Hunger Relief Alliance. Phone: 501-399-9999 Email: Info@ arhungeralliance.org
Arkansas Food Bank	https://arkansasfoodbank.org/?s=map	The Arkansas Foodbank partners with more than 400 charitable agencies across Central and Southern Arkansas to distribute food to families in need. These agencies include food pantries, soup kitchens, youth programs, senior centers, schools, and emergency shelters.	There is a map or list posted on the webpage to help find a partner agency in your area. They are categorized by county and zip. This food is free and available to you, even if you don't qualify for SNAP or EBT. Phone: 501-565-8121



Your Cancer Resource Guide

