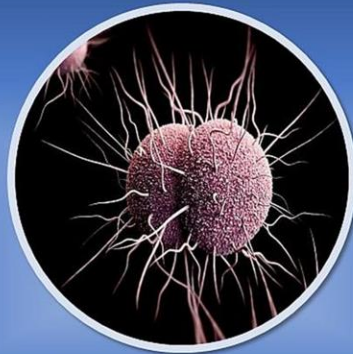




Chlamydia



Gonorrhea



Syphilis

Arkansas STI Surveillance Report 2022



ARKANSAS DEPARTMENT OF HEALTH | 4815 W Markham St, Slot 33, Little Rock, AR 72205

This issue of the Sexually Transmitted Infections (STI) Surveillance Report was published and prepared by the Arkansas Department of Health Epidemiology and Infectious Disease Branches.

Data presented are for Chlamydia, Gonorrhea, and Syphilis infections among Arkansas residents reported to the STI Surveillance Program who were diagnosed as of December 31, 2022.

This report presents both counts and rates of STIs. Rates take into account different population sizes among demographic groups or areas. Comparing rates between two or more groups or areas can identify important differences.

Information on how to report cases of HIV and STIs may be obtained by contacting your local health unit, by calling (501) 661-2887, or online at <https://www.healthy.arkansas.gov/programs-services/topics/hiv-aids-sti-surveillance>.

Additional data information can be viewed on the ADH dashboard at <https://experience.arcgis.com/experience/c313d7c1ccff44aeb88ba402bdb9228e/page/STD%2FSTI/?views=Outbreak-Information>.

Technical Notes:

Due to continuous case reporting and data cleaning, there may be differences in the number of cases reported in this issue compared to previous issues. The figures and tables in this edition supersede those in earlier publications of these data.

All Arkansas STI data were obtained using MMWR dates from the Arkansas Patient Reporting Investigation Surveillance Manager (PRISM) database in March of 2024 unless noted otherwise. MMWR dates for 2022 are January 2nd – December 31st.

U.S. Data Source: Centers for Disease Control and Prevention. *Sexually Transmitted Disease Surveillance 2022*. Atlanta: U.S. Department of Health and Human Services; 2024.

Population Estimates Source: United States Department of Health and Human Services (US DHHS), Centers for Disease Control and Prevention (CDC), National Center for Health Statistics (NCHS), Bridged-Race Population Estimates, United States July 1st resident population by state, county, age, sex, bridged-race, and Hispanic origin. Compiled from bridged-race population estimates 1990-2020. Available on CDC WONDER Online Database. Accessed at [http:// https://wonder.cdc.gov/Bridged-Race-v2020.HTML](http://https://wonder.cdc.gov/Bridged-Race-v2020.HTML) on October 11, 2023.

Table of Contents

STI Trends 2019-2022.....	4
Chlamydia and Gonorrhea	4
Syphilis.....	5
Chlamydia	6
Cases by Gender, Race, Ethnicity and Age	6
Cases by County of Residence	7
Gonorrhea.....	10
Cases by Gender, Race, Ethnicity and Age	10
Cases by County of Residence	11
Early Syphilis	14
Cases by Gender, Race, Ethnicity, and Age.....	14
Cases by County of Residence	15
Contact Information.....	18

STIs in Arkansas, 2019-2022

Table 1a. Reported Cases of Chlamydia and Gonorrhea and Rates per 100,000 Population, Arkansas and United States, 2019-2022

Year	Chlamydia				Gonorrhea			
	Arkansas			U.S. Rate	Arkansas			U.S. Rate
	Cases	Rate	% Change ⁺		Cases	Rate	% Change ⁺	
2019	17,196	569.8	-2.6	551.0	6,907	228.9	-5.4	187.8
2020	16,053	533.1	-6.6	476.7	7,857	260.9	13.8	204.5
2021	17,936	592.8	11.7	495.5	8,185	270.1	4.2	214.0
2022	17,911	591.0	-0.1	495.0	6,788	224.2	-17.1	194.4

⁺Percent change difference from previous year.

- In 2022, there were 17,911 cases of chlamydia and 6,795 cases of gonorrhea reported in Arkansas.
- From 2019 to 2022, there were 69,096 cases of chlamydia and 29,737 cases of gonorrhea reported in Arkansas.
- The rates of chlamydia and gonorrhea in Arkansas have been higher than the national rate every year from 2019-2022.
- In 2022, the rate of chlamydia in Arkansas was 591.2 per 100,000 population. The rate decreased by 0.1% compared to the previous year.
- In 2022, the rate of gonorrhea in Arkansas was 224.2 per 100,000 population. The rate decreased by 17.1% compared to the previous year.

STIs in Arkansas, 2019-2022 (cont.)

Table 1b. Reported Cases of Syphilis and Rates per 100,000 Population by Stage, Arkansas, and United States, 2019-2022

Year	Primary & Secondary (P&S)				Early Non-P&S				Congenital			
	Arkansas			U.S. Rate	Arkansas			U.S. Rate	Arkansas			U.S. Rate*
	Cases	Rate	% Change ⁺		Cases	Rate	% Change ⁺		Cases	Birth Rate*	% Change ⁺	
2019	404	13.4	40.3	11.9	267	8.8	-26.6	12.7	21	57.4	-16.0	50.2
2020	502	16.7	24.3	12.6	234	7.8	-12.4	13.0	23	65.2	9.5	59.8
2021	990	32.7	97.2	16.2	527	17.4	125.2	15.6	50	139.0	117.4	78.5
2022	1,001	32.9	1.1	17.7	454	14.9	-13.9	17.1	69	191.9	38.0	102.5

Abbreviations: Early Non-P&S = Early Non-Primary Non-Secondary

* Birth Rate is per 100,000 Arkansas live births.

⁺Percent change difference from previous year.

- In 2022, there were 1,001 cases of P&S, 454 cases of early non-P&S, and 69 cases of congenital syphilis reported in Arkansas.
- In 2022, the rates of syphilis in Arkansas were: P&S – 32.9 per 100,000 population; early non-P&S – 14.9 per 100,000 population; and congenital – 191.9 per 100,000 live births.
- The rates of P&S and congenital syphilis in Arkansas have been higher than the national rate every year from 2019-2022.
- In 2022, the rate of congenital syphilis increased by 38% compared to the previous year.

Table 2. Chlamydia Cases by Gender, Race/Ethnicity & Age Group, Arkansas, 2022

Gender	Cases	% of Total Cases	Rate
Male	5,349	29.9	359.8
Female	12,554	70.1	813.5
Unknown [†]	8	0.0	—*
Total	17,911	100.0	591.0

Race	Cases	% of Total Cases	Rate
White	4,606	25.7	189.5
Black	7,221	40.3	1,460.2
Am Indian/AK Native	22	0.1	62.1
Asian/HI/Pacific Is	164	0.9	232.6
Other/Multiple Races	777	4.3	—*
Unknown [†]	5,121	28.6	—*
Total	17,911	100.0	591.0

Ethnicity	Cases	% of Total Cases	Rate
Hispanic or Latino	619	3.5	254.6
Not Hispanic or Latino	8,171	45.6	293.1
Unknown [†]	9,121	50.9	—*
Total	17,911	100.0	591.0

Age at Diagnosis	Cases	% of Total Cases	Rate
<15	173	0.1	29.8
15-19	5,127	28.6	2,601.3
20-24	6,646	37.1	3,301.7
25-29	2,901	16.2	1,430.4
30-34	1,515	8.5	772.7
35-39	726	4.1	380.2
40-44	430	2.4	236.6
45-49	189	1.1	105.2
50-54	90	0.5	50.5
55-64	90	0.5	23.3
65+	24	0.1	4.5
Total	17,911	100.0	591.0

Note: Rates are per 100,000 standard population. Due to rounding, percentages may not add up to 100.0.

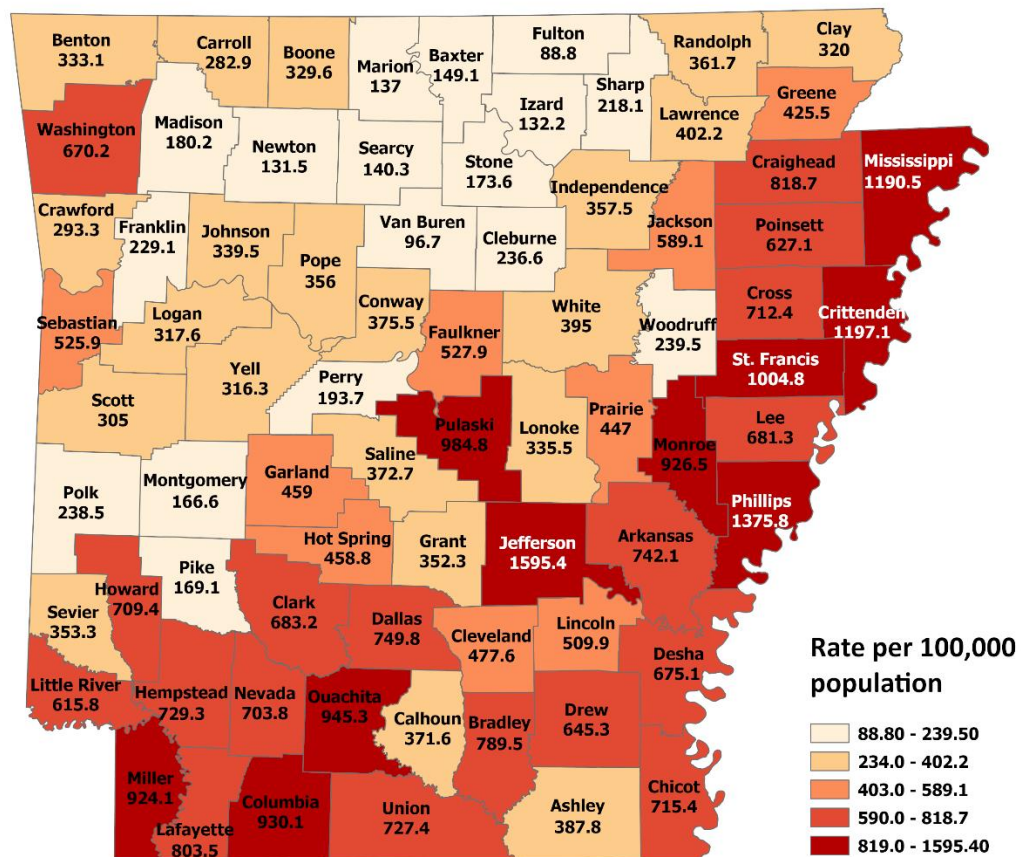
*No comparable population data available to calculate rate.

[†] Unknown variable due to lack of reporting.

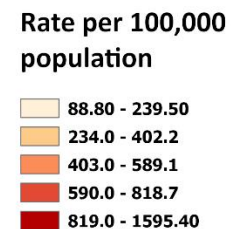
[◊] To protect confidentiality, cases suppressed for demographics with <10 cases

- The majority of chlamydia cases (70.1%) were diagnosed among females.
- The rate of chlamydia infection among Black persons was 7.7 times greater than the rate among White persons.
- Chlamydia was most commonly diagnosed in ages 20-24 years (37.1%), 15-19 years (28.6%), and 25-29 years (16.2%).

Figure 1. Chlamydia - Rates of Reported Cases per 100,000 Population by County, Arkansas, 2022



Date: March 27, 2024
 Source: Arkansas PRISM Database
 Map created: CPHP Epidemiology-Informatics



- In 2022, the rate of chlamydia infections in Arkansas was 591.0 per 100,000.
- Jefferson County had the highest rate (1595.4 per 100,000) of chlamydia in 2022.
- Fulton County had the lowest rate (88.8 per 100,000) of chlamydia in 2022.
- Counties in the Delta region had the highest rates.

**Table 3. Chlamydia Cases by County of Residence,
Arkansas, 2022**

County	Cases	% of Total Cases	Rate
ARKANSAS	129	0.7	742.1
ASHLEY	75	0.4	387.8
BAXTER	63	0.4	149.1
BENTON	962	5.4	333.1
BOONE	124	0.7	329.6
BRADLEY	84	0.5	789.5
CALHOUN	19	0.1	371.6
CARROLL	80	0.5	282.9
CHICOT	71	0.4	715.4
CLARK	151	0.8	683.2
CLAY	46	0.3	320
CLEBURNE	59	0.3	236.6
CLEVELAND	38	0.2	477.6
COLUMBIA	217	1.2	930.1
CONWAY	79	0.4	375.5
CRAIGHEAD	919	5.1	818.7
CRAWFORD	186	1.0	293.3
CRITTENDEN	570	3.2	1,197.1
CROSS	115	0.6	712.4
DALLAS	51	0.3	749.8
DESHA	75	0.4	675.1
DREW	116	0.7	645.3
FAULKNER	670	3.7	527.9
FRANKLIN	41	0.2	229.1
FULTON	11	0.1	88.8
GARLAND	458	2.6	459
GRANT	65	0.4	352.3
GREENE	194	1.1	425.5
HEMPSTEAD	155	0.9	729.3
HOT SPRING	155	0.9	458.8
HOWARD	93	0.5	709.4
INDEPENDENCE	135	0.8	357.5
IZARD	18	0.1	132.2
JACKSON	98	0.6	589.1
JEFFERSON	1,043	5.8	1,595.4
JOHNSON	90	0.5	339.5
LAFAYETTE	53	0.3	803.5
LAWRENCE	66	0.4	402.2
LEE	58	0.3	681.3
LINCOLN	66	0.4	509.9

County	Cases	% of Total Cases	Rate
LITTLE RIVER	75	0.4	615.8
LOGAN	68	0.4	317.6
LONOKE	248	1.4	335.5
MADISON	30	0.2	180.2
MARION	23	0.1	137
MILLER	399	2.2	924.1
MISSISSIPPI	477	2.7	1,190.5
MONROE	61	0.3	926.5
MONTGOMERY	15	0.1	166.6
NEVADA	57	0.3	703.8
NEWTON	10	0.1	131.5
OUACHITA	219	1.2	945.3
PERRY	20	0.1	193.7
PHILLIPS	238	1.3	1,375.8
PIKE	18	0.1	169.1
POINSETT	146	0.8	627.1
POLK	47	0.3	238.5
POPE	229	1.3	356
PRAIRIE	38	0.2	447
PULASKI	3,870	21.6	984.8
RANDOLPH	66	0.4	361.7
ST. FRANCIS	248	1.4	1,004.8
SALINE	462	2.6	372.7
SCOTT	31	0.2	305
SEARCY	11	0.1	140.3
SEBASTIAN	671	3.8	525.9
SEVIER	59	0.3	353.3
SHARP	38	0.2	218.1
STONE	22	0.1	173.6
UNION	278	1.6	727.4
VAN BUREN	16	0.1	96.7
WASHINGTON	1,630	9.1	670.2
WHITE	311	1.7	395
WOODRUFF	15	0.1	239.5
YELL	67	0.4	316.3
State Total	17,911	100.0	591.0

Note: Rates are per 100,000 standard population. Due to rounding, percentages may not add up to 100.0.

**Table 4. Gonorrhea Cases by Gender, Race/Ethnicity & Age Group
Arkansas, 2022**

Gender	Cases	% of Total Cases	Rate
Male	3,469	51.1	233.3
Female	3,318	48.9	214.9
Unknown	1	0.0	—*
Total	6,788	100.0	224.0

Race	Cases	% of Total Cases	Rate
White	1,830	27.0	75.3
Black	3,257	48.0	658.6
Am Indian/AK Native	13	0.2	36.7
Asian/HI/Pacific Is	39	0.6	55.3
Other/Multiple Races	264	3.9	—*
Unknown [†]	1,385	20.4	—*
Total	6,788	100.0	224.0

Ethnicity	Cases	% of Total Cases	Rate
Hispanic or Latino	187	2.8	72.9
Not Hispanic or Latino	3,966	58.4	142.3
Unknown [†]	2,635	38.8	—*
Total	6,788	100.0	224.0

Age at Diagnosis	Cases	% of Total Cases	Rate
<15	39	0.6	6.7
15-19	1,342	19.8	680.9
20-24	2,017	29.7	1,002.0
25-29	1,229	18.1	606.0
30-34	869	12.8	443.2
35-39	510	7.5	267.1
40-44	361	5.3	198.6
45-49	197	2.9	109.6
50-54	104	1.5	58.3
55-64	95	1.4	24.6
65+	25	0.4	4.7
Total	6,788	100.0	224.0

Note: Rates are per 100,000 standard population. Due to rounding, percentages may not add up to 100.0.

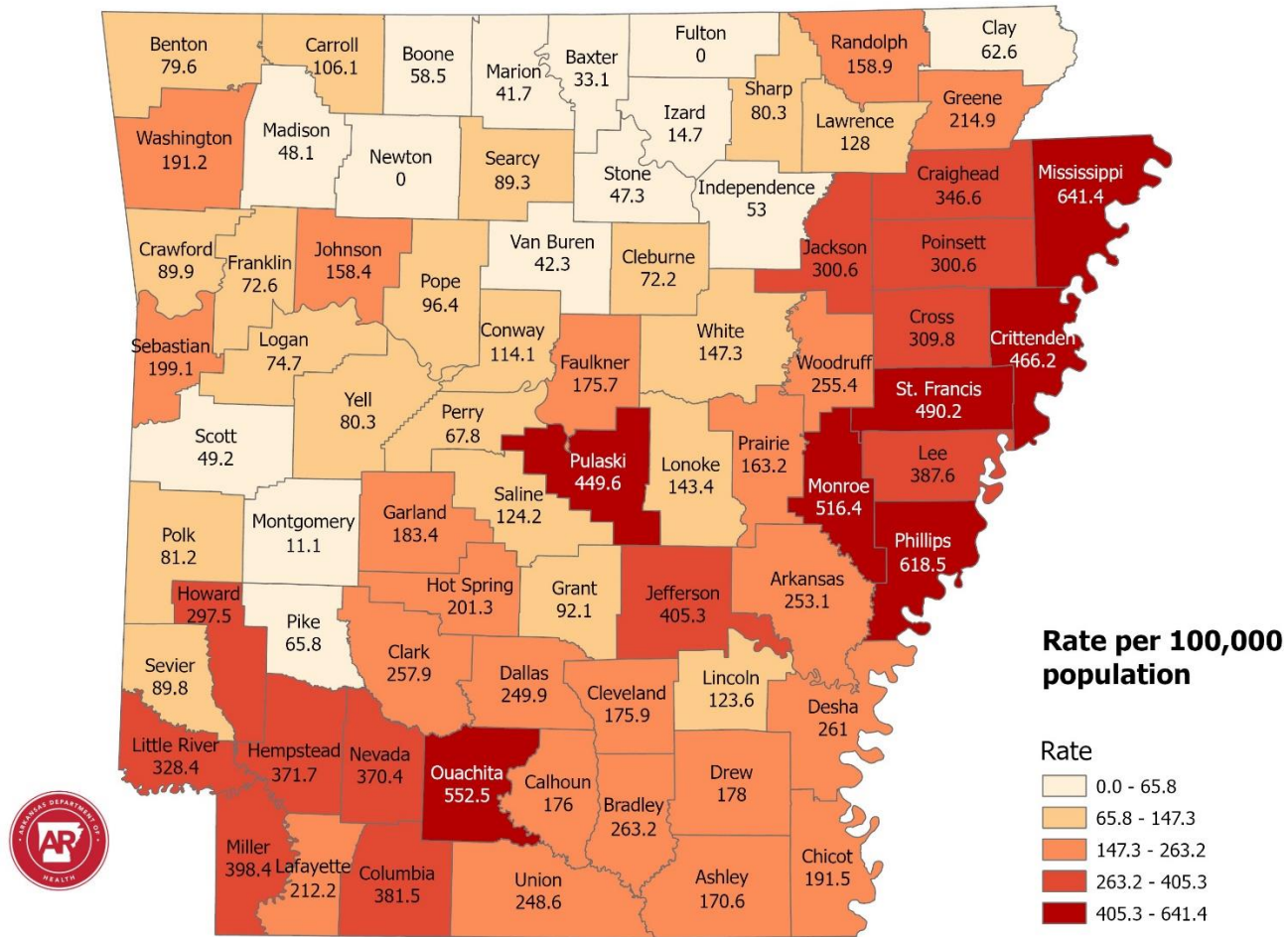
*No comparable population data available to calculate rate.

[†] Unknown variable due to lack of reporting.

◇ To protect confidentiality, cases suppressed for demographics with <10 cases

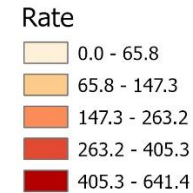
- The rate of gonorrhea infection among Black persons was 8.76 greater than the rate among White persons.
- Over half of all gonorrhea infections (58.4%) were diagnosed in the non-hispanic population.
- Gonorrhea is most commonly diagnosed among people ages 20-24 years (29.7%), followed by 15-19 years (19.8%) and 25-29 years (18.1%).

Figure 2. Gonorrhea: Rates of Reported Cases per 100,000 Population by County of Residence, Arkansas, 2022



Date: March 27, 2024
 Source: Arkansas PRISM Database
 Map created: DHDA Epidemiology-Informatics

Rate per 100,000 population



- In 2022, the rate of reported gonorrhea infections in Arkansas was 224.0 per 100,000.
- Excluding counties with zero cases reported, Mississippi County had the highest rate (641.4 per 100,000) and Montgomery County had the lowest rate (11.1 per 100,000) of gonorrhea in 2022.
- Counties located along the Delta and Southwestern regions had the highest rates.

**Table 5. Gonorrhea Cases by County of Residence,
Arkansas, 2022**

County	Cases	% of Total Cases	Rate
ARKANSAS	44	0.7	253.1
ASHLEY	33	0.5	170.6
BAXTER	14	0.2	33.1
BENTON	230	3.4	79.6
BOONE	22	0.3	58.5
BRADLEY	28	0.4	263.2
CALHOUN	9	0.1	176.0
CARROLL	30	0.4	106.1
CHICOT	19	0.3	191.5
CLARK	57	0.8	257.9
CLAY	9	0.1	62.6
CLEBURNE	18	0.3	72.2
CLEVELAND	14	0.2	175.9
COLUMBIA	89	1.3	381.5
CONWAY	24	0.4	114.1
CRAIGHEAD	389	5.7	346.6
CRAWFORD	57	0.8	89.9
CRITTENDEN	222	3.3	466.2
CROSS	50	0.7	309.8
DALLAS	17	0.3	249.9
DESHA	29	0.4	261.0
DREW	32	0.5	178.0
FAULKNER	223	3.3	175.7
FRANKLIN	13	0.2	72.6
FULTON	0	0.0	0.0
GARLAND	183	2.7	183.4
GRANT	17	0.3	92.1
GREENE	98	1.4	214.9
HEMPSTEAD	79	1.2	371.7
HOT SPRING	68	1.0	201.3
HOWARD	39	0.6	297.5
INDEPENDENCE	20	0.3	53.0
IZARD	2	0.0	14.7
JACKSON	50	0.7	300.6
JEFFERSON	265	3.9	405.3
JOHNSON	42	0.6	158.4
LAFAYETTE	14	0.2	212.2
LAWRENCE	21	0.3	128.0
LEE	33	0.5	387.6

County	Cases	% of Total Cases	Rate
LINCOLN	16	0.2	123.6
LITTLE RIVER	40	0.6	328.4
LOGAN	16	0.2	74.7
LONOKE	106	1.6	143.4
MADISON	8	0.1	48.1
MARION	7	0.1	48.1
MILLER	172	2.5	398.4
MISSISSIPPI	257	3.8	641.4
MONROE	34	0.5	516.4
MONTGOMERY	1	0.0	11.1
NEVADA	30	0.4	370.4
NEWTON	0	0.0	0.0
OUACHITA	128	1.9	552.5
PERRY	7	0.1	67.8
PHILLIPS	107	1.6	618.5
PIKE	7	0.1	65.8
POINSETT	70	1.0	300.6
POLK	16	0.2	81.2
POPE	62	0.9	96.4
PRAIRIE	13	0.2	163.2
PULASKI	1,767	26.0	449.6
RANDOLPH	29	0.4	158.9
ST. FRANCIS	121	1.8	490.2
SALINE	154	2.3	124.2
SCOTT	5	0.1	49.2
SEARCY	7	0.1	89.3
SEBASTIAN	254	3.7	199.1
SEVIER	15	0.2	89.8
SHARP	14	0.2	80.3
STONE	6	0.1	47.3
UNION	95	1.4	248.6
VAN BUREN	7	0.1	42.3
WASHINGTON	465	6.9	191.2
WHITE	116	1.7	147.3
WOODRUFF	16	0.2	255.4
YELL	17	0.3	80.3
State Total	6,788	100.0	224.0

Note: Rates are per 100,000 standard population. Due to rounding, percentages may not add up to 100.0.

Table 6. Early Syphilis Cases by Gender, Race/Ethnicity & Age Group, Arkansas, 2022**

Gender	Cases	% of Total Cases	Rate
Male	813	55.8	54.7
Female	644	44.2	41.7
Total	1,457	100.0	48.1

Race/Ethnicity	Cases	% of Total Cases	Rate
White	791	54.3	32.6
Black	508	34.9	102.7
Am Indian/AK Native	— [◇]	— [◇]	— [◇]
Asian/HI/Pacific Islander	15	1.0	21.3
Other/Multiple Races	124	8.5	—*
Unknown [†]	— [◇]	— [◇]	—*
Total	1,457	100.0	48.1

Age at Diagnosis	Cases	% of Total Cases	Rate
<15	— [◇]	— [◇]	— [◇]
15-19	54	3.7	27.4
20-24	228	15.7	113.3
25-29	264	18.1	130.2
30-34	278	19.1	141.8
35-39	238	16.3	124.6
40-44	170	11.7	93.5
45-49	91	6.3	50.6
50-54	59	4.1	33.1
55-64	64	4.4	16.6
65+	— [◇]	— [◇]	— [◇]
Total	1,457	100.0	48.1

Note: Rates are per 100,000 standard population. Due to rounding, percentages may not add up to 100.0.

** Early syphilis includes Primary, Secondary, and Early Non-Primary Non-Secondary stages

* No comparable population data available to calculate rate.

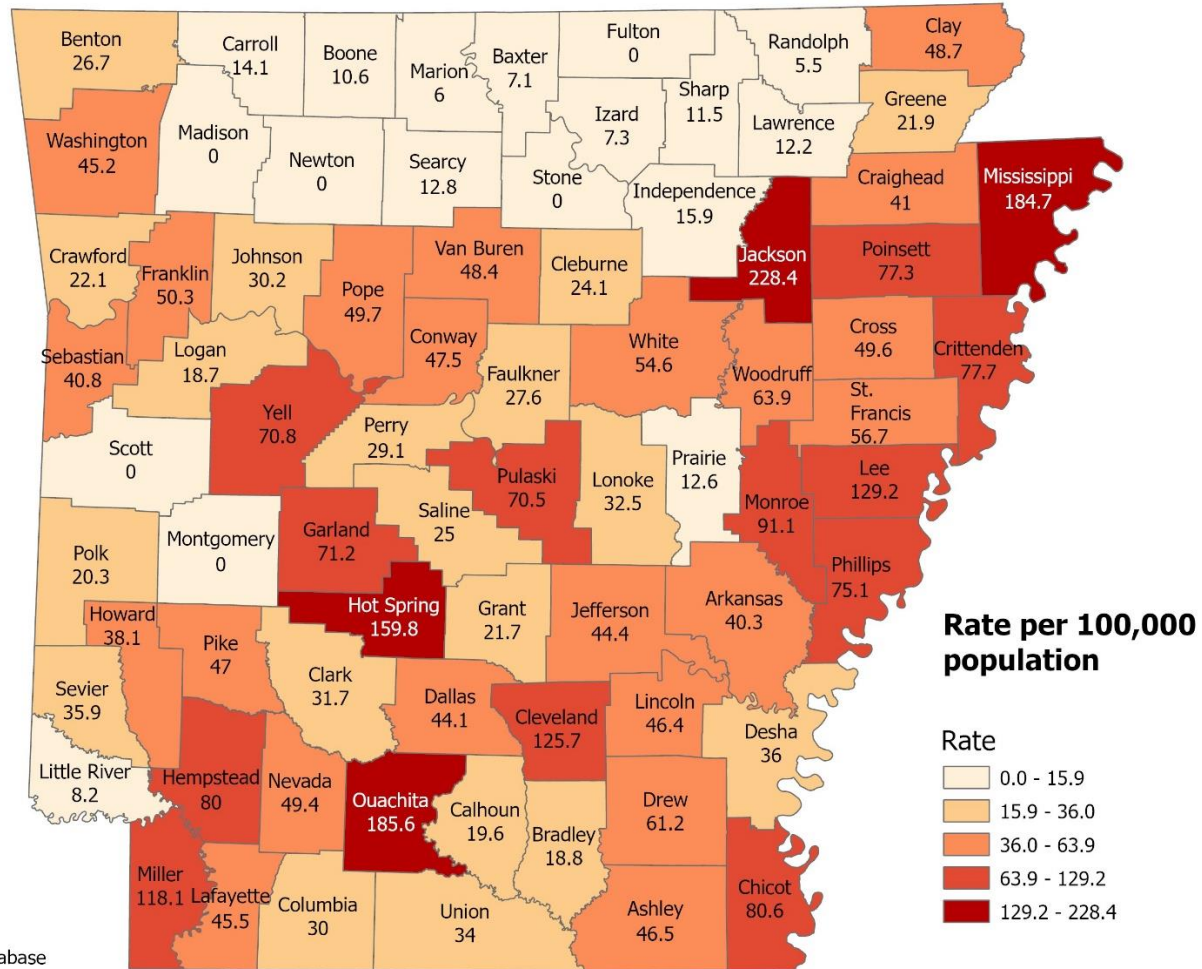
† Unknown Race/Ethnicity due to lack of reporting.

◇ To protect confidentiality, cases suppressed for demographics with <10 cases

- Males represented 55.8% of all early syphilis cases and females represented 44.2% of cases.
- Blacks had the highest rate of infection (102.7 per 100,000).
- Early syphilis was diagnosed most frequently in ages 30-34 years (19.1%), 25-29 years (18.1%), 35-39 years (16.3%), and 20-24 years (15.7%).

Figure 3. Early Syphilis: Rates of Reported Cases per 100,000 Population by County of Residence, Arkansas, 2022

*Early Syphilis includes Primary, Secondary, and Early Non-Primary Non-Secondary stage.



Date: March 27, 2024
 Source: Arkansas PRISM Database
 Map created: DHDA Epidemiology-Informatics

- In 2022, the rate of reported early syphilis in Arkansas was 41.8 per 100,000.
- Excluding counties with zero cases reported, Jackson County had the highest rate (228.4 per 100,000) followed by the lowest rate in Randolph County (5.5 per 100,000).

Table 7. Early Syphilis Cases by County of Residence, Arkansas, 2022**

County	Cases	% of Total Cases	Rate
ARKANSAS	7	0.5	40.3
ASHLEY	9	0.6	46.5
BAXTER	3	0.2	7.1
BENTON	77	5.3	26.7
BOONE	4	0.3	10.6
BRADLEY	2	0.1	18.8
CALHOUN	1	0.1	19.6
CARROLL	4	0.3	14.1
CHICOT	8	0.6	80.6
CLARK	7	0.5	31.7
CLAY	7	0.5	48.7
CLEBURNE	6	0.4	24.1
CLEVELAND	10	0.7	125.7
COLUMBIA	7	0.5	30.0
CONWAY	10	0.7	47.5
CRAIGHEAD	46	3.2	41.0
CRAWFORD	14	1.0	22.1
CRITTENDEN	37	2.5	77.7
CROSS	8	0.6	49.6
DALLAS	3	0.2	44.1
DESHA	4	0.3	36.0
DREW	11	0.8	61.2
FAULKNER	35	2.4	27.6
FRANKLIN	9	0.6	50.3
FULTON	0	0.0	0.0
GARLAND	71	4.9	71.2
GRANT	4	0.3	21.7
GREENE	10	0.7	21.9
HEMPSTEAD	17	1.2	80.0
HOT SPRING	54	3.7	159.8
HOWARD	5	0.3	38.1
INDEPENDENCE	6	0.4	15.9
IZARD	1	0.1	7.3
JACKSON	38	2.6	228.4
JEFFERSON	29	2.0	44.4
JOHNSON	8	0.6	30.2
LAFAYETTE	3	0.2	45.5
LAWRENCE	2	0.1	12.2
LEE	11	0.8	129.2

County	Cases	% of Total Cases	Rate
LINCOLN	6	0.4	46.4
LITTLE RIVER	1	0.1	8.2
LOGAN	4	0.3	18.7
LONOKE	24	1.7	32.5
MADISON	0	0.0	0.0
MARION	1	0.1	6.0
MILLER	51	3.5	118.1
MISSISSIPPI	74	5.1	184.7
MONROE	6	0.4	91.1
MONTGOMERY	0	0.0	0.0
NEVADA	4	0.3	49.4
NEWTON	0	0.0	0.0
OUACHITA	43	3.0	185.6
PERRY	3	0.2	29.1
PHILLIPS	13	0.9	75.1
PIKE	5	0.3	47.0
POINSETT	18	1.2	77.3
POLK	4	0.3	20.3
POPE	32	2.2	49.7
PRAIRIE	1	0.1	12.6
PULASKI	278	19.1	70.7
RANDOLPH	1	0.1	5.5
ST. FRANCIS	14	1.0	56.7
SALINE	31	2.1	25.0
SCOTT	0	0.0	0.0
SEARCY	1	0.1	12.8
SEBASTIAN	52	3.6	40.8
SEVIER	6	0.4	35.9
SHARP	2	0.1	11.5
STONE	0	0.0	0.0
UNION	13	0.9	34.0
VAN BUREN	8	0.6	48.4
WASHINGTON	110	7.6	45.2
WHITE	43	3.0	54.6
WOODRUFF	4	0.3	63.9
YELL	15	1.0	70.8
State Total	1,457	100	48.1

Note: Rates are per 100,000 standard population. Due to rounding, percentages may not add up to 100.0.

** Early syphilis includes Primary, Secondary, and Early Non-Primary Non-Secondary stages

Contact Information

Epidemiology Branch
Arkansas Department of Health
4815 West Markham, Slot 32
Little Rock, AR 72205
(501) 534-6123
(501) 280-4830

Infectious Disease Branch
Arkansas Department of Health
4815 West Markham, Slot 33
Little Rock, AR 72205
(501) 661-2943
(501) 661-2971

