



TUBERCULOSIS CONTROL PROGRAM

TUBERCULOSIS MORBIDITY ANNUAL STATISTICAL REPORT 2022

Tuberculosis Control Program Central Office Personnel

- ❖ Dr. Naveen Patil, State TB Control Officer
- ❖ Dr. Sandra Chai, Deputy State TB Control Officer
- ❖ Susan Cooley, TB Grants/Program Manager
- ❖ Virginia Maturino, BSN RN, Nurse Consultant
- ❖ Michelle Herndon, Administrative Analyst
- ❖ Chris Ray, Public Health Associate, CDC
- ❖ Dr. Leonard Mukasa, Chief Epidemiology Officer

Contact: Leonard Mukasa, Leonard.Mukasa@arkansas.gov

Phone: 501-280-4106

Figure 1: Progress Towards Tuberculosis (TB) Elimination, Arkansas, 1969-2022

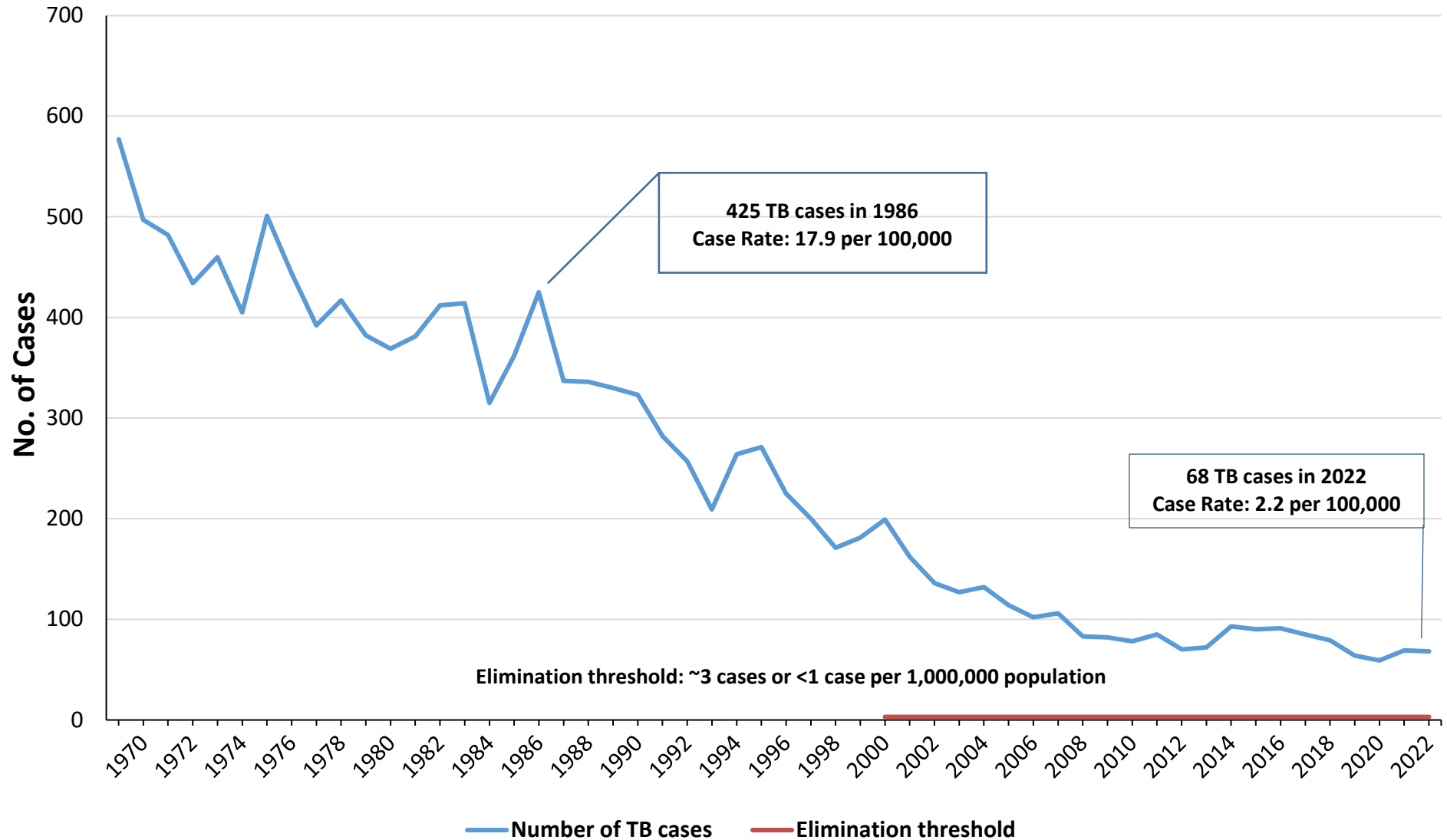
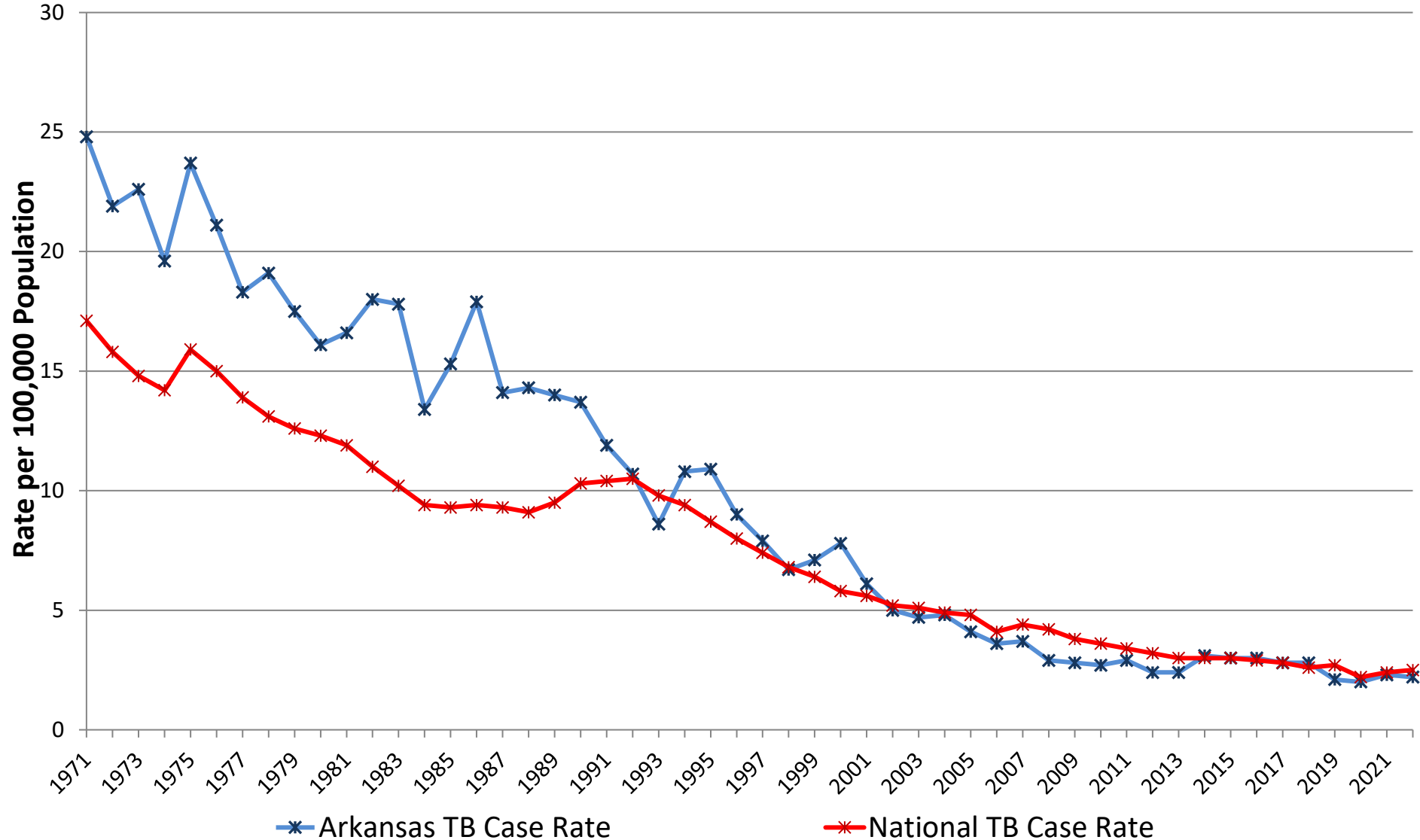
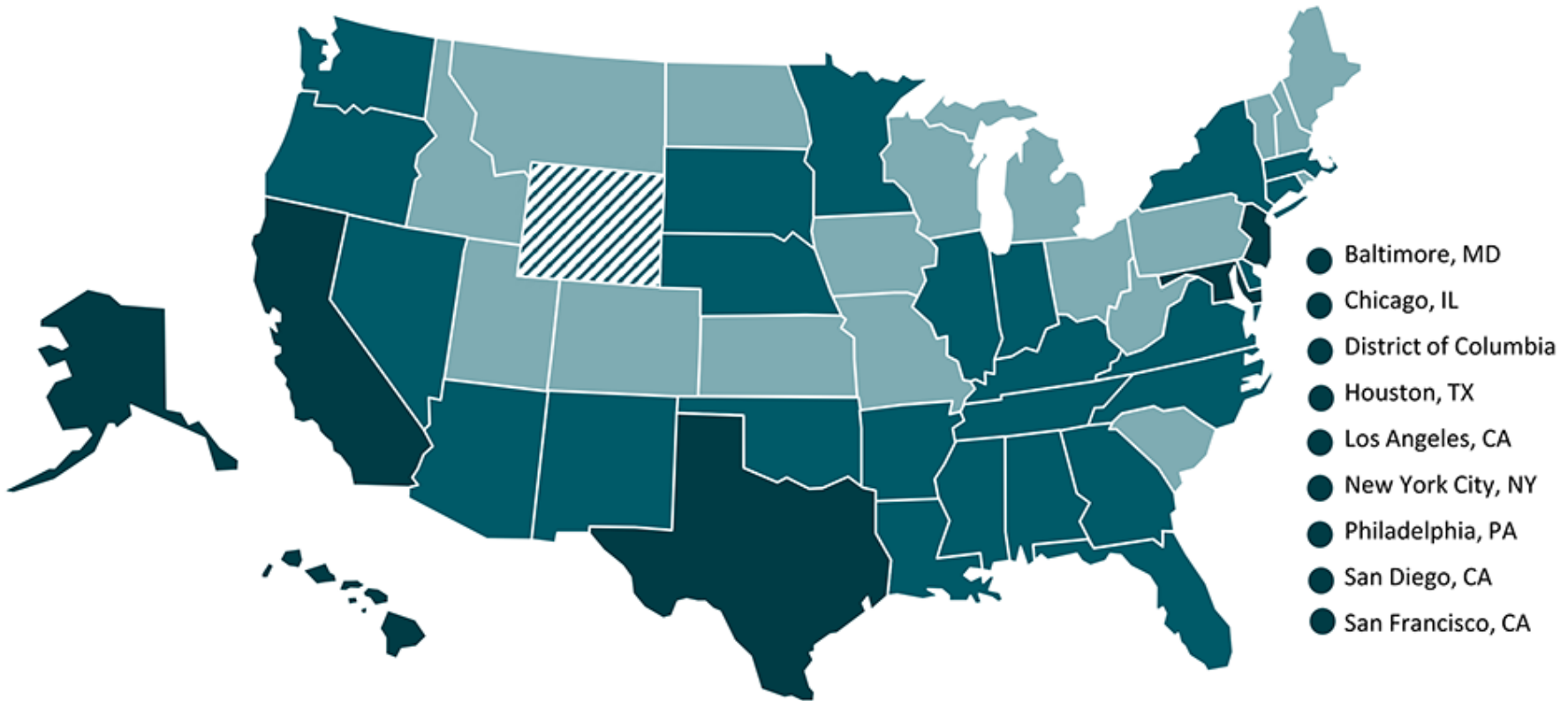


Figure 2: Arkansas and United States TB Case Rates per 100,000 Population, 1971-2022



National data from the [Division of Tuberculosis Elimination, National Center for HIV, Viral Hepatitis, STD, and TB Prevention, Centers for Disease Control and Prevention](#)

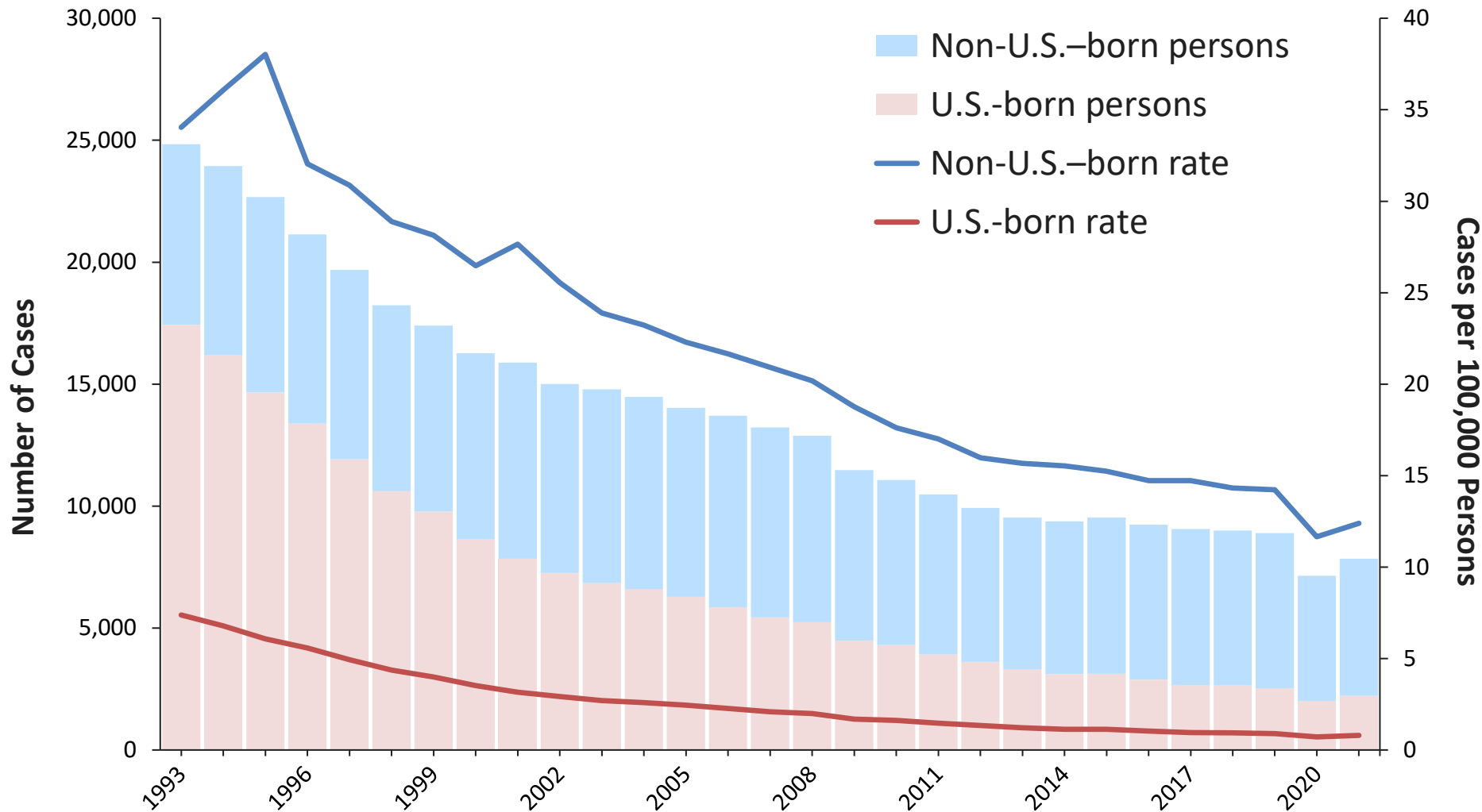
Figure 3: Overall TB Incidence,* United States, 2020



Met 2025 target (1.3 or below)*
 Above 2025 target (1.3), but at or below national average (2.2)*
 Above national average (>2.2)*
 No reported TB cases

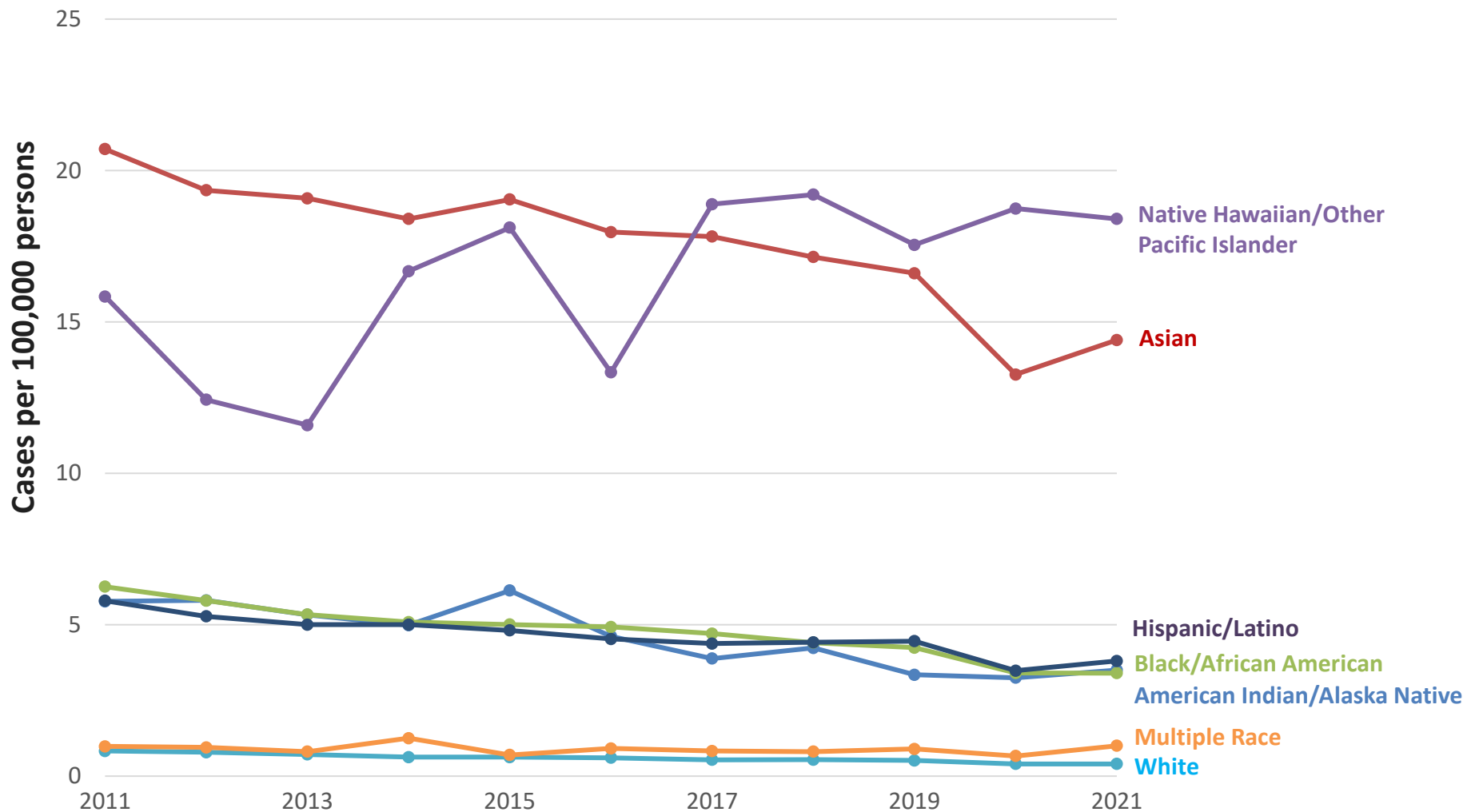
*Numbers of TB cases per 100,000 persons

Figure 4: TB Cases and Incidence Rates by Origin of Birth, United States, 1993-2022



National data from the [Division of Tuberculosis Elimination, National Center for HIV, Viral Hepatitis, STD, and TB Prevention, Centers for Disease Control and Prevention](#)

Figure 5: TB Incidence Rates by Race/Ethnicity,* United States, 2011-2021



*All races are non-Hispanic; multiple race indicates two or more races reported for a person but does not include persons of Hispanic or Latino origin.

Figure 6: TB Cases and Case Rates, Arkansas, 1969-2022

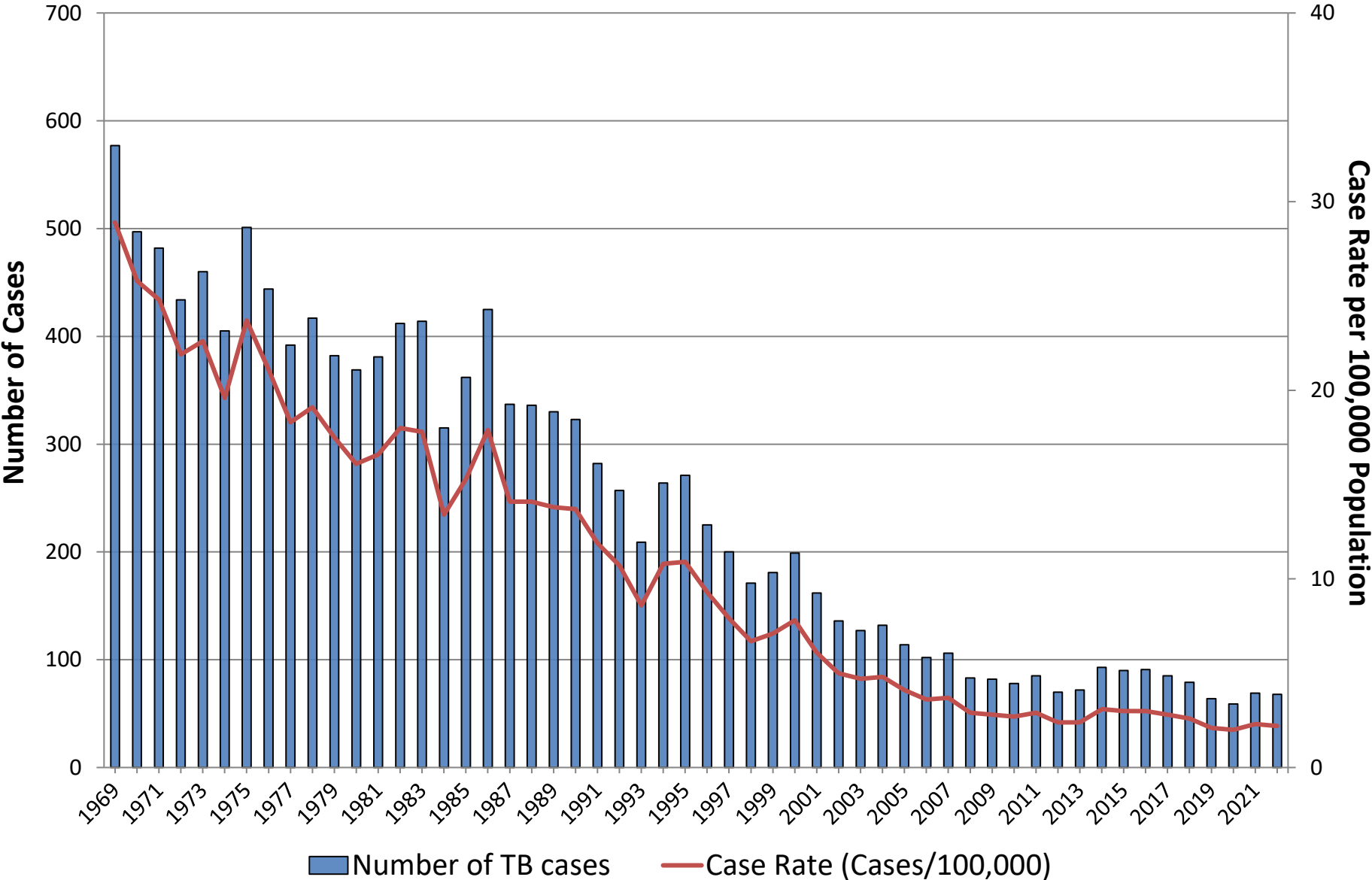


Figure 7: Trends in TB Cases, Arkansas, 1995-2022

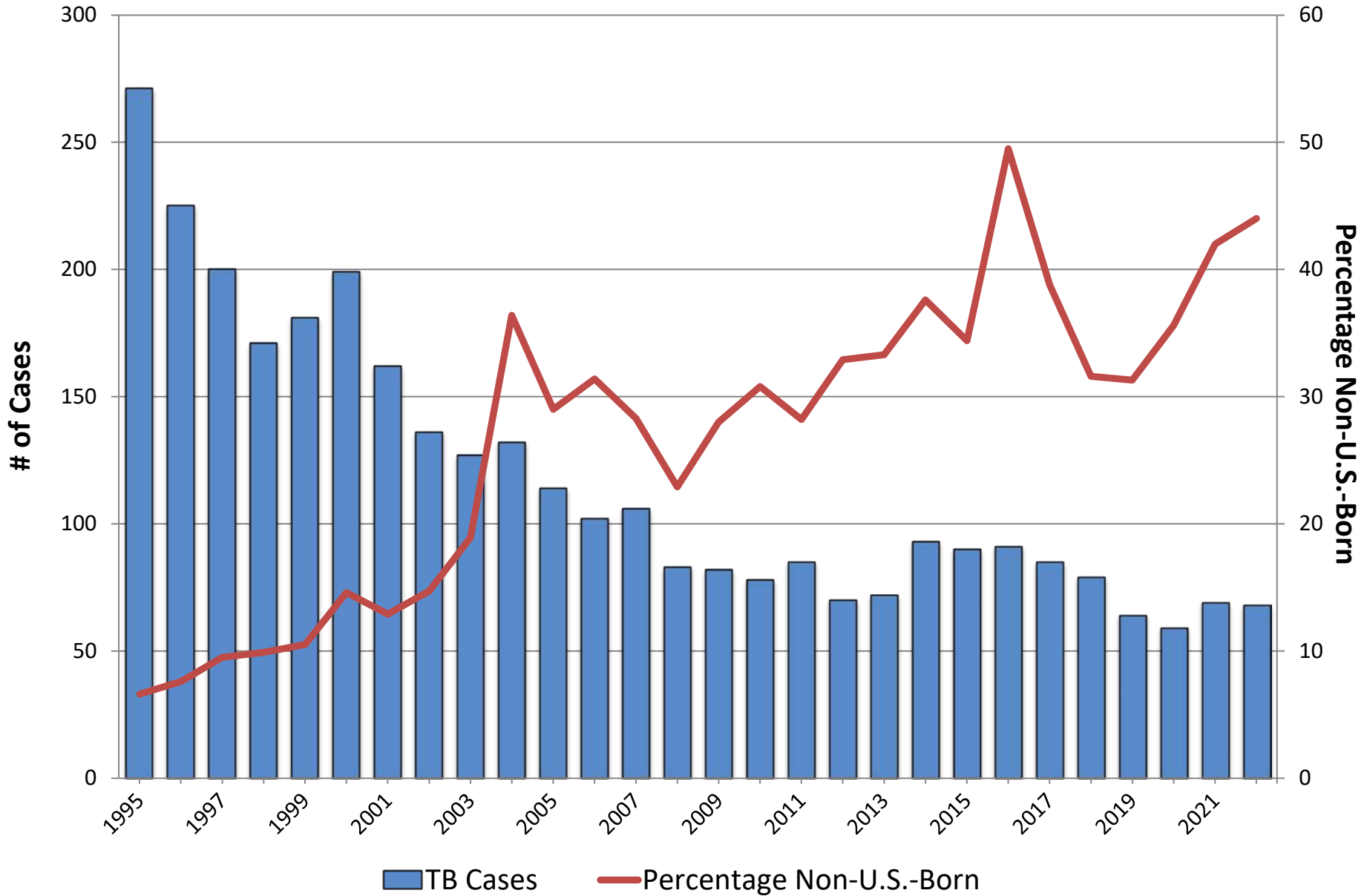


Figure 11: TB Cases, by Sex, Arkansas, 2005-2022

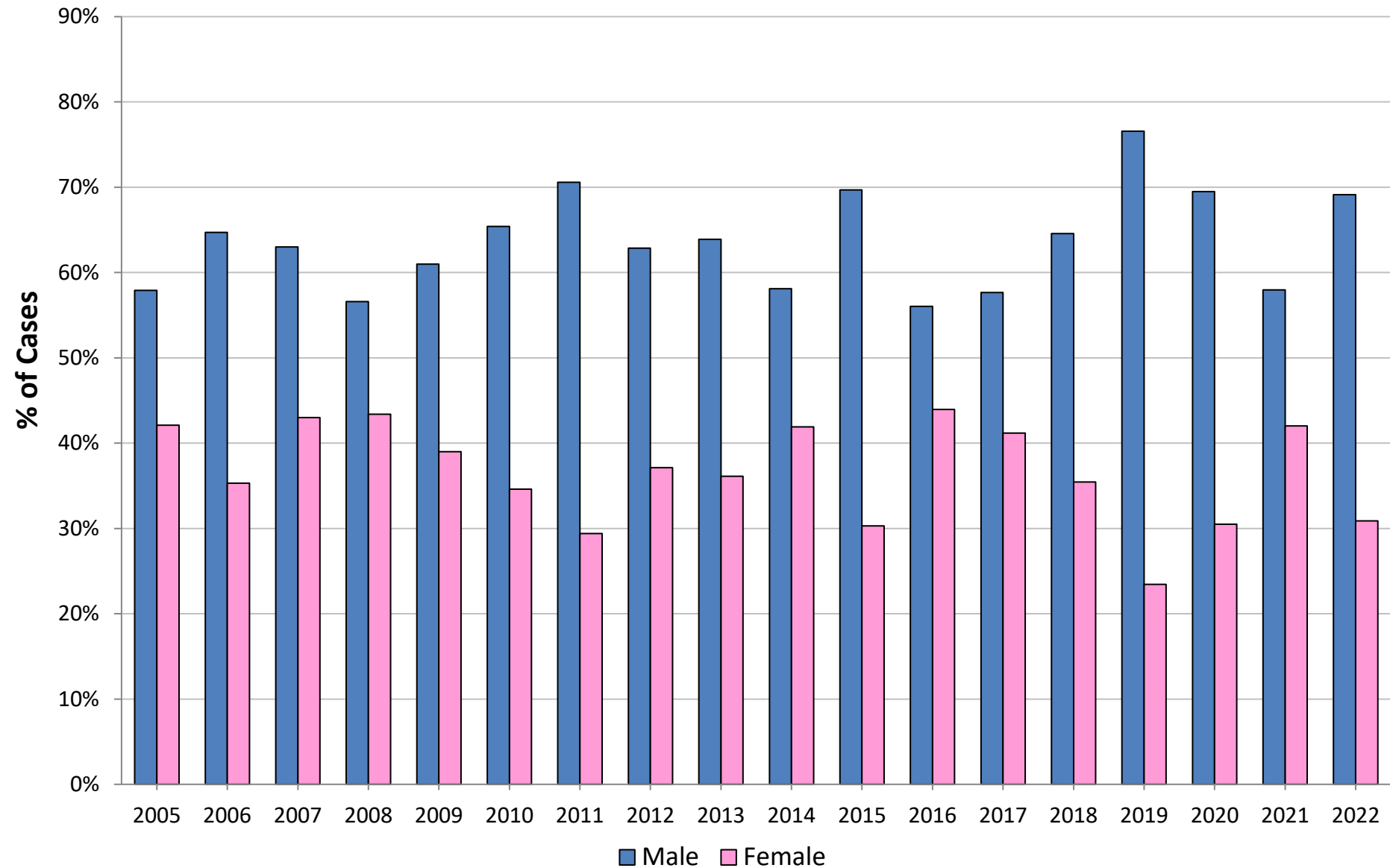


Figure 19: TB - HIV Cases, Arkansas, 1995-2022

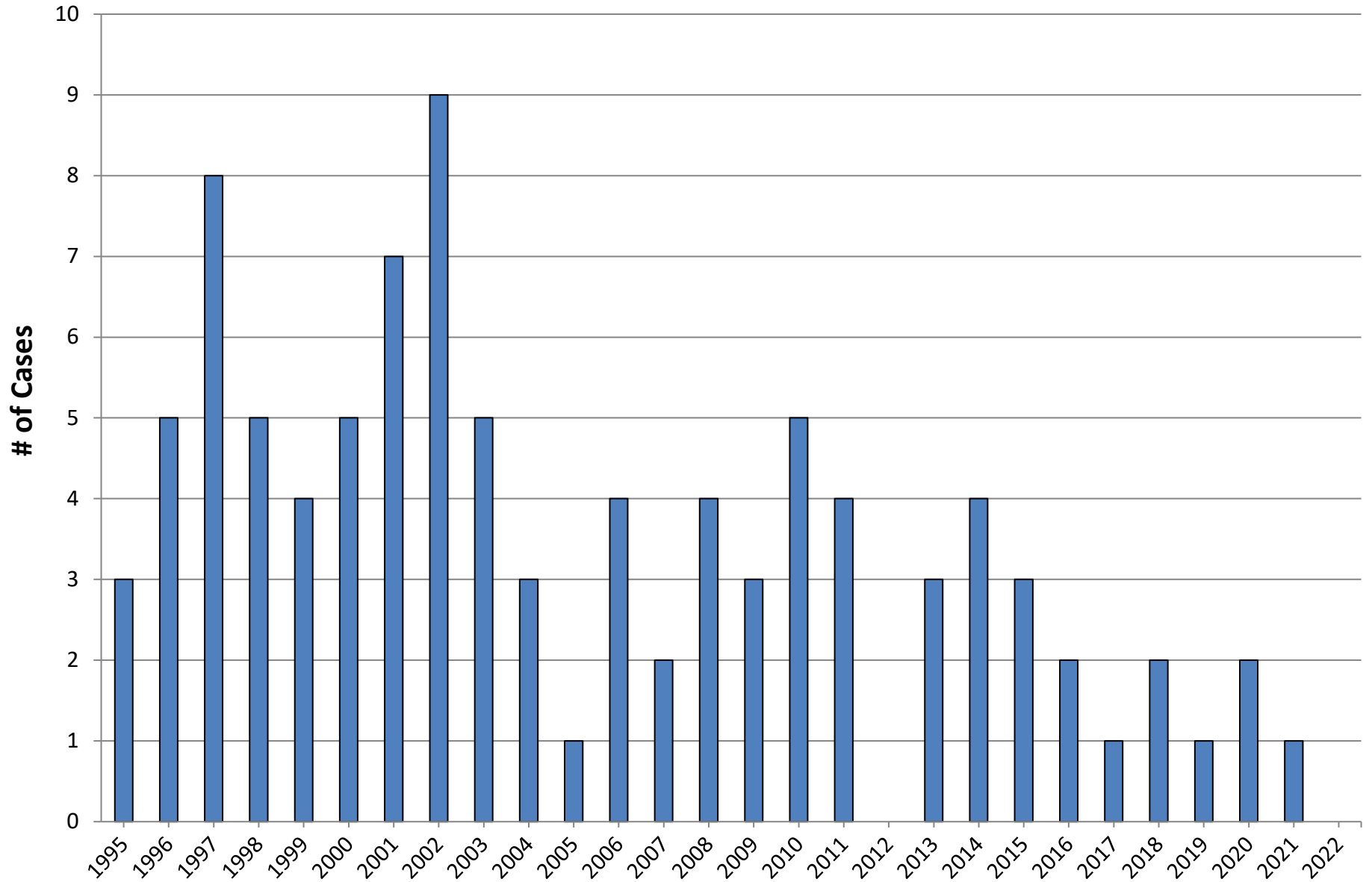
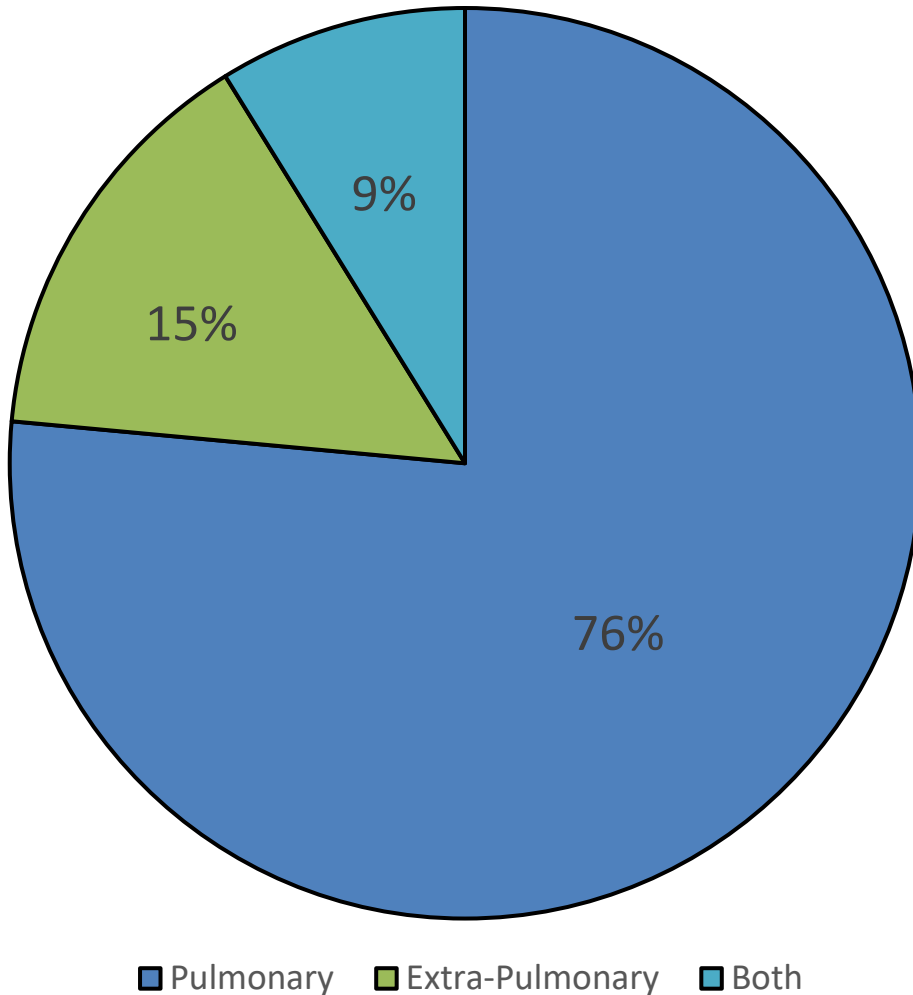


Figure 22: Arkansas TB Cases by Site of Disease, 2022



Sites of Extra-Pulmonary Cases

Disease Site	# of Cases
Bone and/or Joint	1
Eye and Ear Appendages	5
Lymphatic Cervical	3
Pericardium	1
Pleural	1
Other	1

Figure 23: Selected Risk Factors by Origin of Birth, Arkansas, 2022

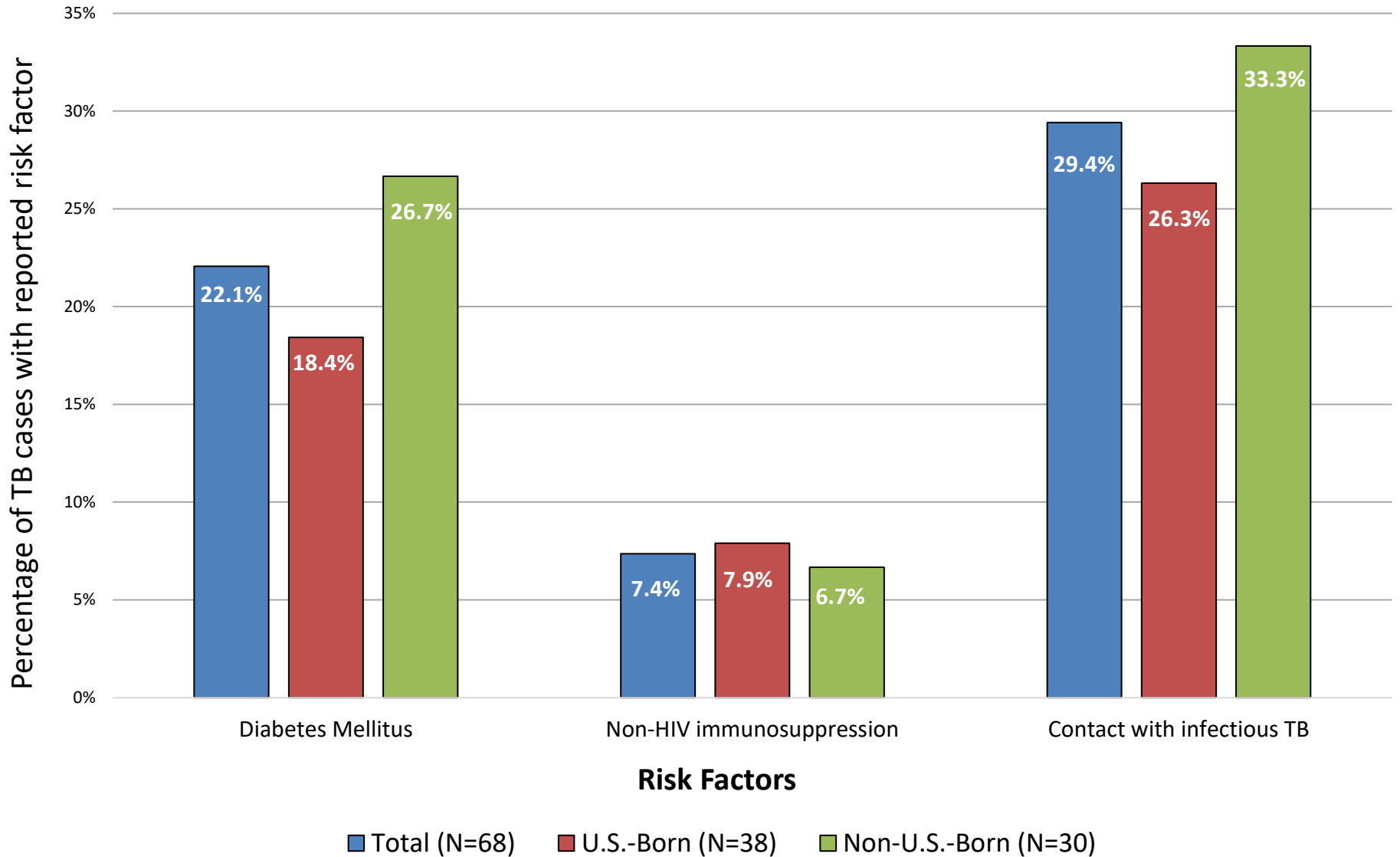


Table 1: TB Cases by Region and Type Diagnosis, Arkansas, 2021 vs. 2022

2021 Cases				2022 Cases*			
Region	Total	Culture	Clinical	Region	Total	Culture	Clinical
NW	29	21	8	NW	32	21	11
NE	9	7	2	NE	9	8	1
Central	11	9	2	Central	12	10	2
SE	10	7	3	SE	3	3	0
SW	10	10	0	SW	12	11	1
Total	69	54 (78.3%)	15 (21.7%)	Total	68	53 (77.9%)	15 (22.1%)

*Verification by positive NAA are counted as culture above.
 *Verification by provider diagnosis counted as clinical above.

Table 3: Drug Resistance and Vulnerable Population Characteristics, Arkansas, 2019-2022

Characteristics	2019	2020	2021	2022
Any Resistance Primary Drugs (% culture positive):	4(6.3%)	1(1.7%)	2 (2.9%)	4(5.9%)
Drugs:				
Isoniazid	1	0	0	4
Rifampin	0	0	0	2
Ethambutol	0	0	0	1
Pyrazinamide	3	1	2	3
Streptomycin*	1	1	1	2
MDR-TB:	0	0	0	3
HIV Positive:	1	2	1	0
Nursing Home:	0	3	2	1
Homeless**	7	3	4	3
Prison	1	2	2	3

* Streptomycin excluded from primary drugs.

** Homeless status determined using new CDC definition.

**Table 4: TB Case Rates*, by Region,
Arkansas, 2012-2022**

Region	2012	2013	2014	2015	2016	2017	2018	2019	2020	2021	2022
Northwest	3.6	1.6	4.8	3.2	3.7	3.4	3.3	2.2	2.3	2.7	2.9
Northeast	2.5	1.3	1.6	2.5	1.8	1.4	1.1	0.9	2	1.6	1.5
Central	1.7	2.1	1.7	2.7	2.9	2	2.9	2.1	1.3	1.3	1.4
Southeast	2.7	2.9	4.2	1.9	4	2.5	2.6	2.1	1.7	4.3	1.3
Southwest	2.7	2.2	4.3	5.3	3.1	5	2.5	4.1	2.5	3.3	4.0
State	2.4	2.4	3.1	3	3	2.8	2.6	2.1	2	2.3	2.2

* Cases /100,000 population

Table 5: TB Drug Resistance, Arkansas, 1999-2022

Year	INH	RIF	EMB	SM	PZA	MDR-TB
1999	7	1	0	2	--	0
2000	2	0	0	1	--	0
2001	4	0	0	2	--	0
2002	2	1	0	4	--	1
2003	1	0	0	0	1	0
2004	2	0	0	1	1	0
2005	3	0	0	4	1	0
2006	0	0	0	0	0	0
2007	6	3	1	1	5	3
2008	3	0	0	4	0	0
2009	2	1	0	2	2	1
2010	1	0	0	1	1	0
2011	4	2	1	2	2	1
2012	6	0	0	3	1	0
2013	1	0	0	0	4	0
2014	2	0	0	1	3	0
2015	1	0	0	2	1	0
2016	3	1	0	2	1	1
2017	3	2	0	1	1	3
2018	1	0	0	1	2	0
2019	1	0	0	1	3	0
2020	0	0	0	1	1	0
2021	0	0	0	1	2	0
2022	4	2	1	1	3	3
TOTAL	59	13	3	38	35	13