



TUBERCULOSIS CONTROL PROGRAM

TUBERCULOSIS MORBIDITY ANNUAL STATISTICAL REPORT 2015



Tuberculosis Control Program Central Office Personnel

- ❖ Dr. Naveen Patil, State TB Control Officer
- ❖ Dr. Leonard Mukasa, Chief Epidemiology Officer
- ❖ Marsha Majors, RN BSN, Nurse Consultant
- ❖ Aurelisa Burnett, Administrative Specialist
- ❖ Michelle Herndon, Administrative Analyst
- ❖ Courtney Radcliff, MPH, TB Program Manager

Contact: Leonard Mukasa, Leonard.Mukasa@arkansas.gov

Phone: 501-280-4106

Figure 1: Trends in TB Cases, Arkansas, 1995-2015

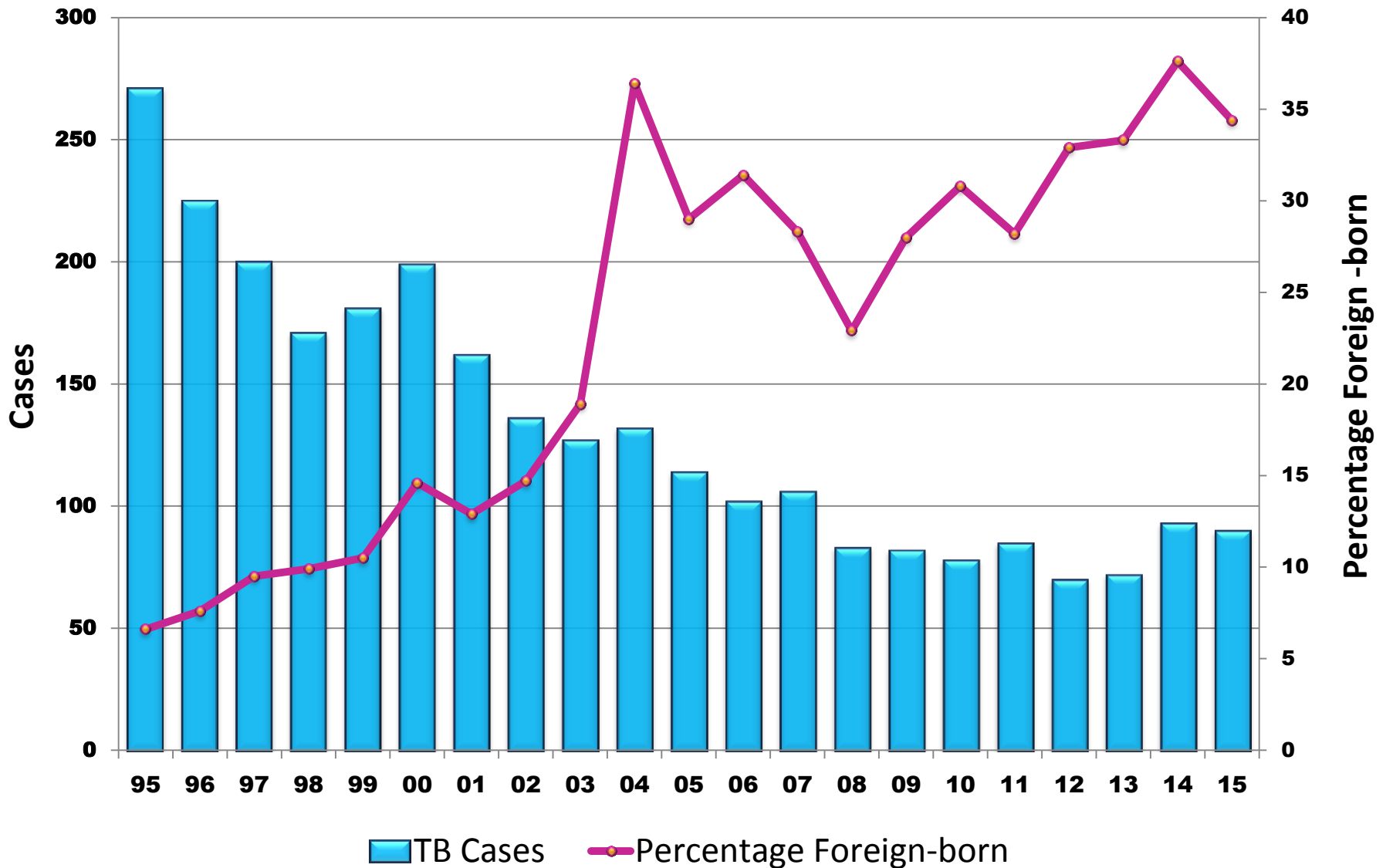


Figure 2: Arkansas and United States TB Cases Rates, 1971-2015

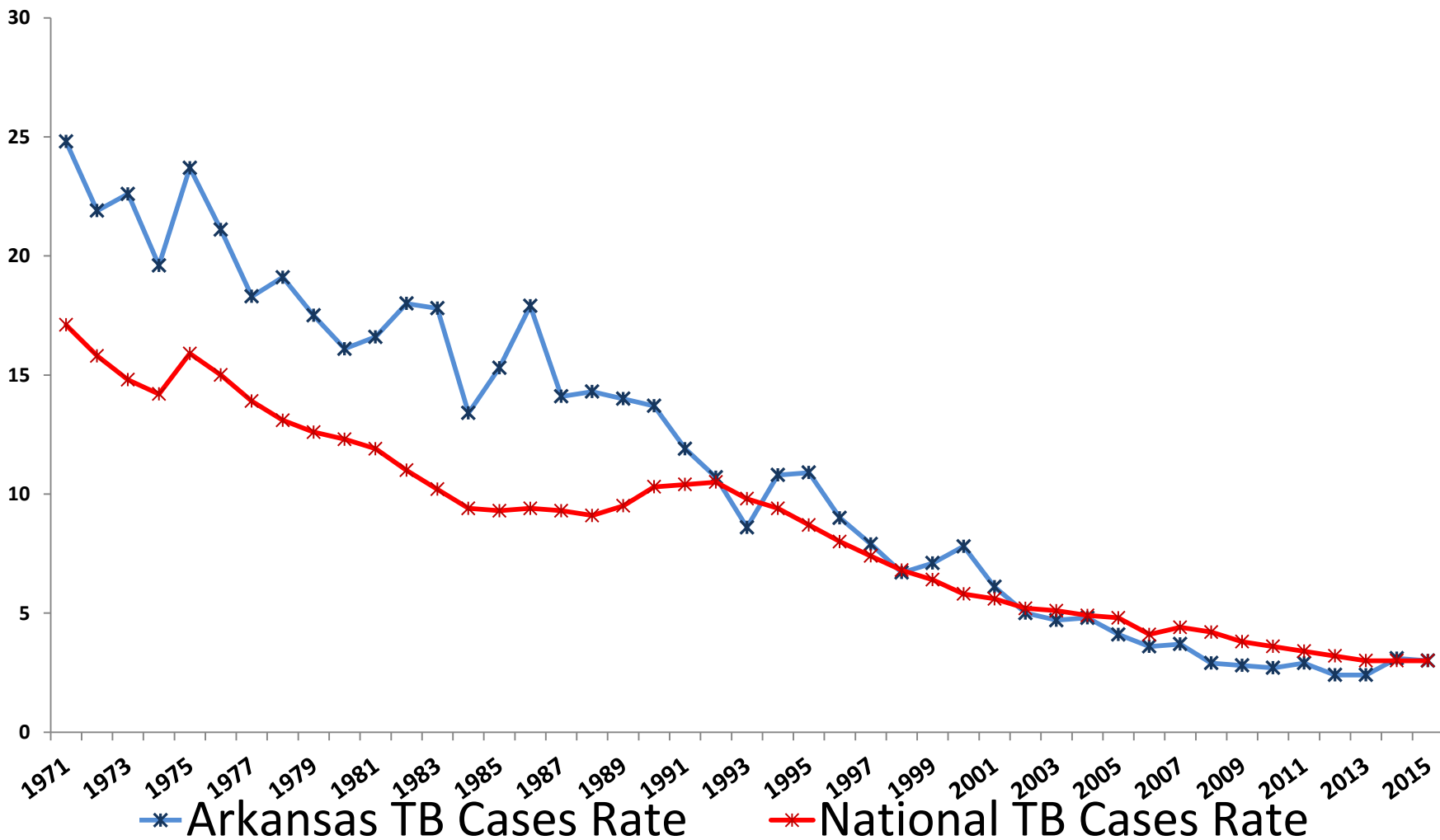


Figure 3: Country of Birth, Foreign Born TB Cases, 2015
(N = 31)

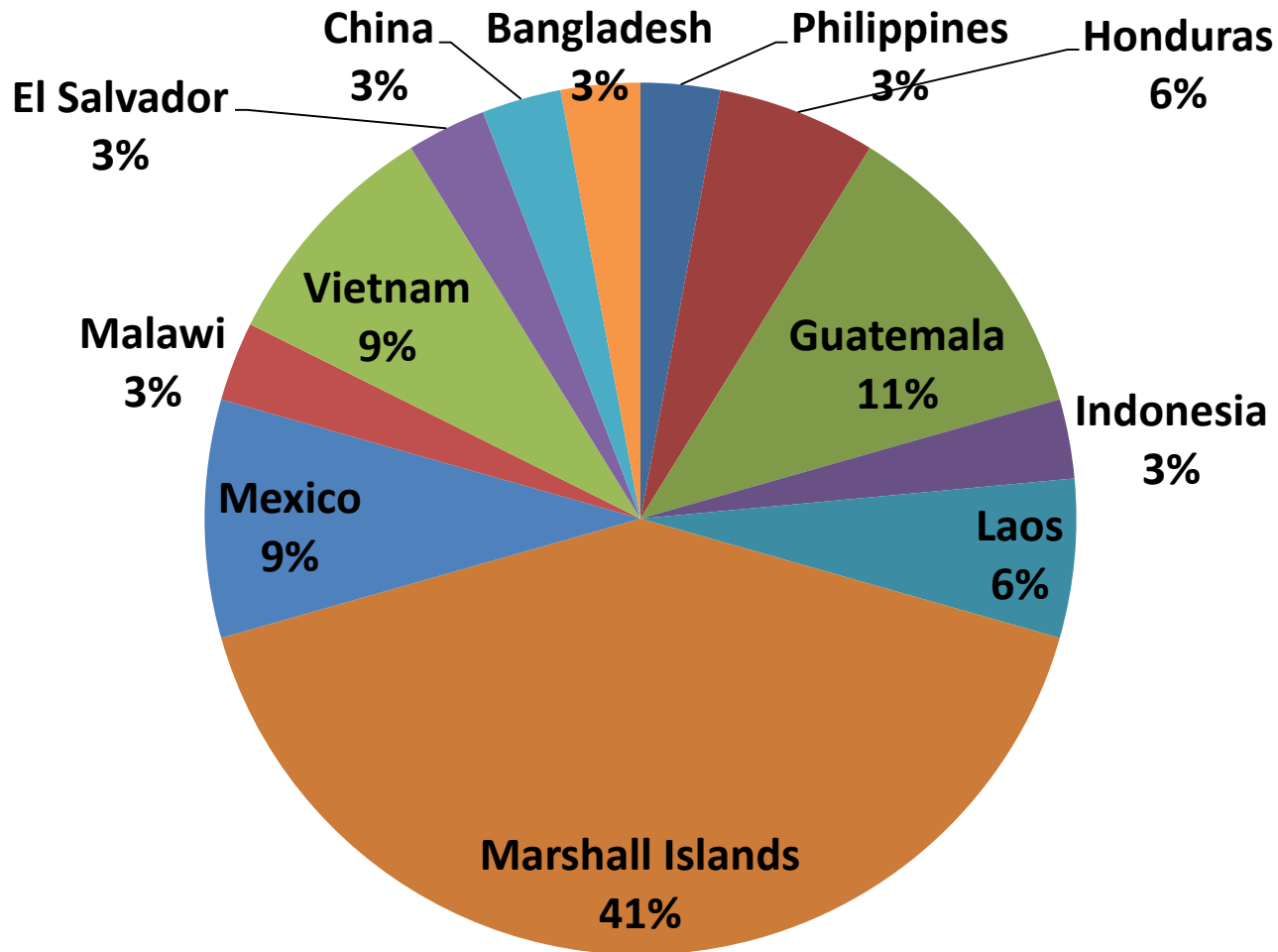


Figure 4: TB Cases and Case Rates Arkansas, 1969-2015

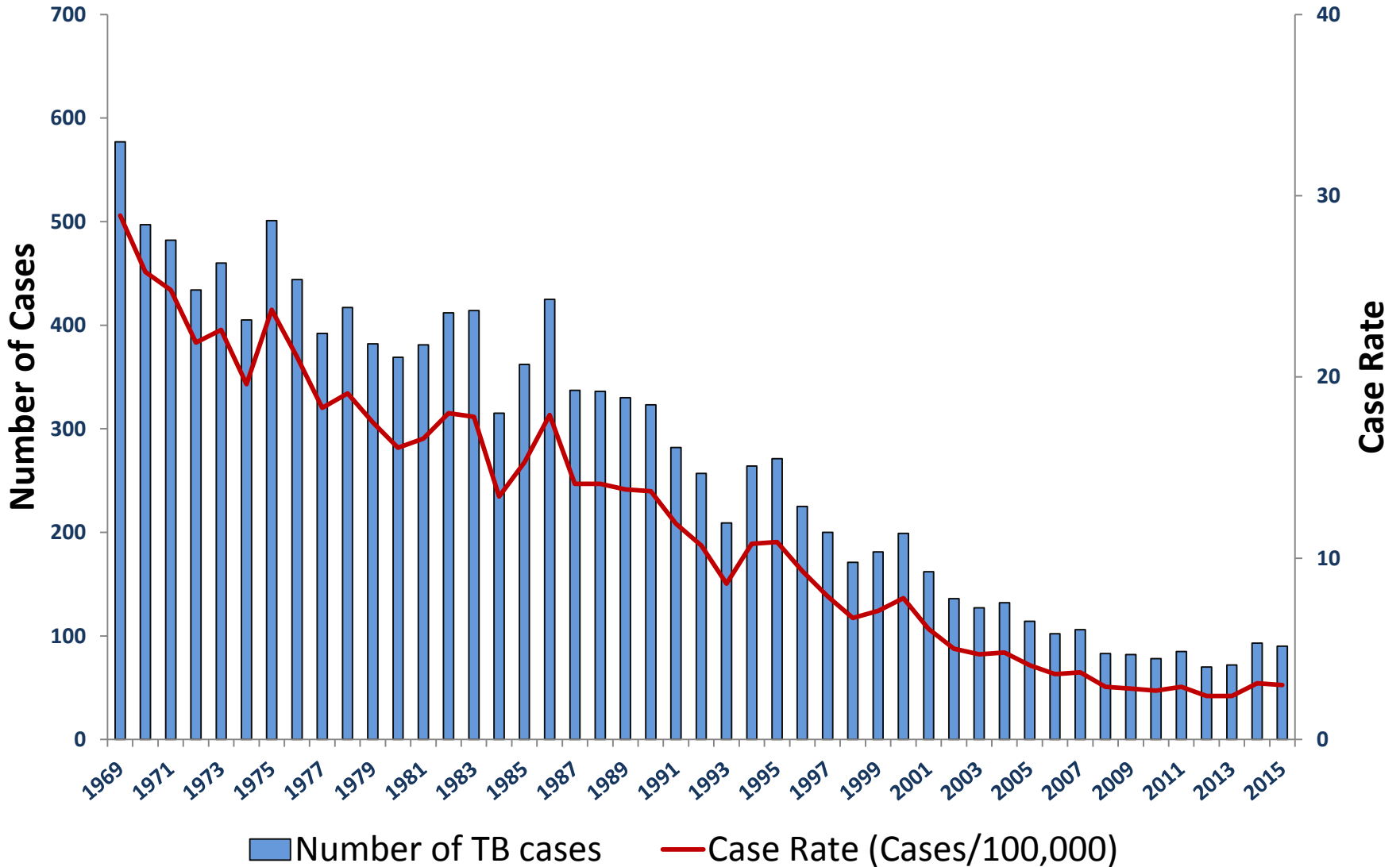


Figure 5: TB Cases in Prisons, Arkansas, 1989 - 2015

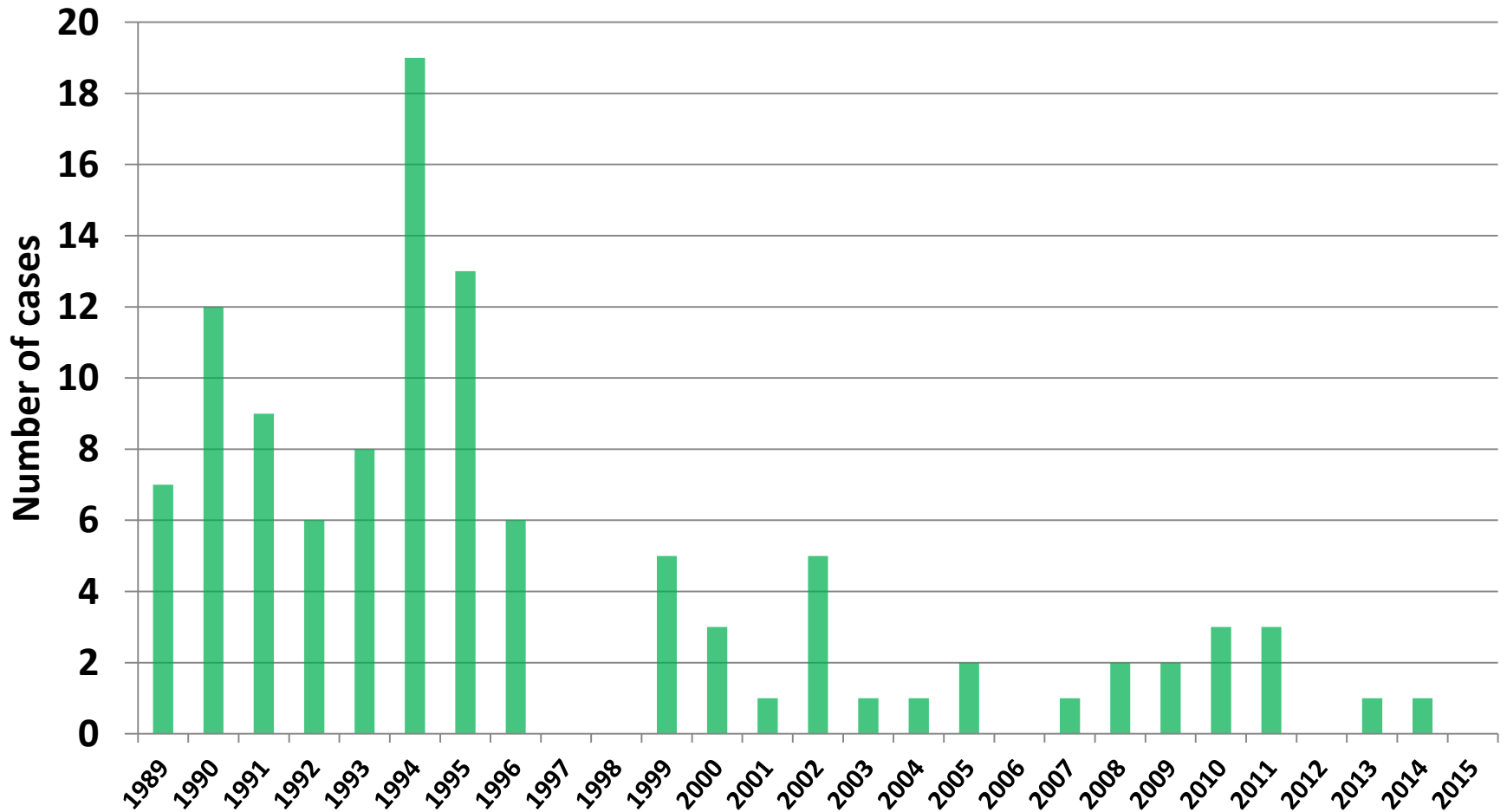


Figure 6: Age Distribution, Arkansas TB Cases, 2014

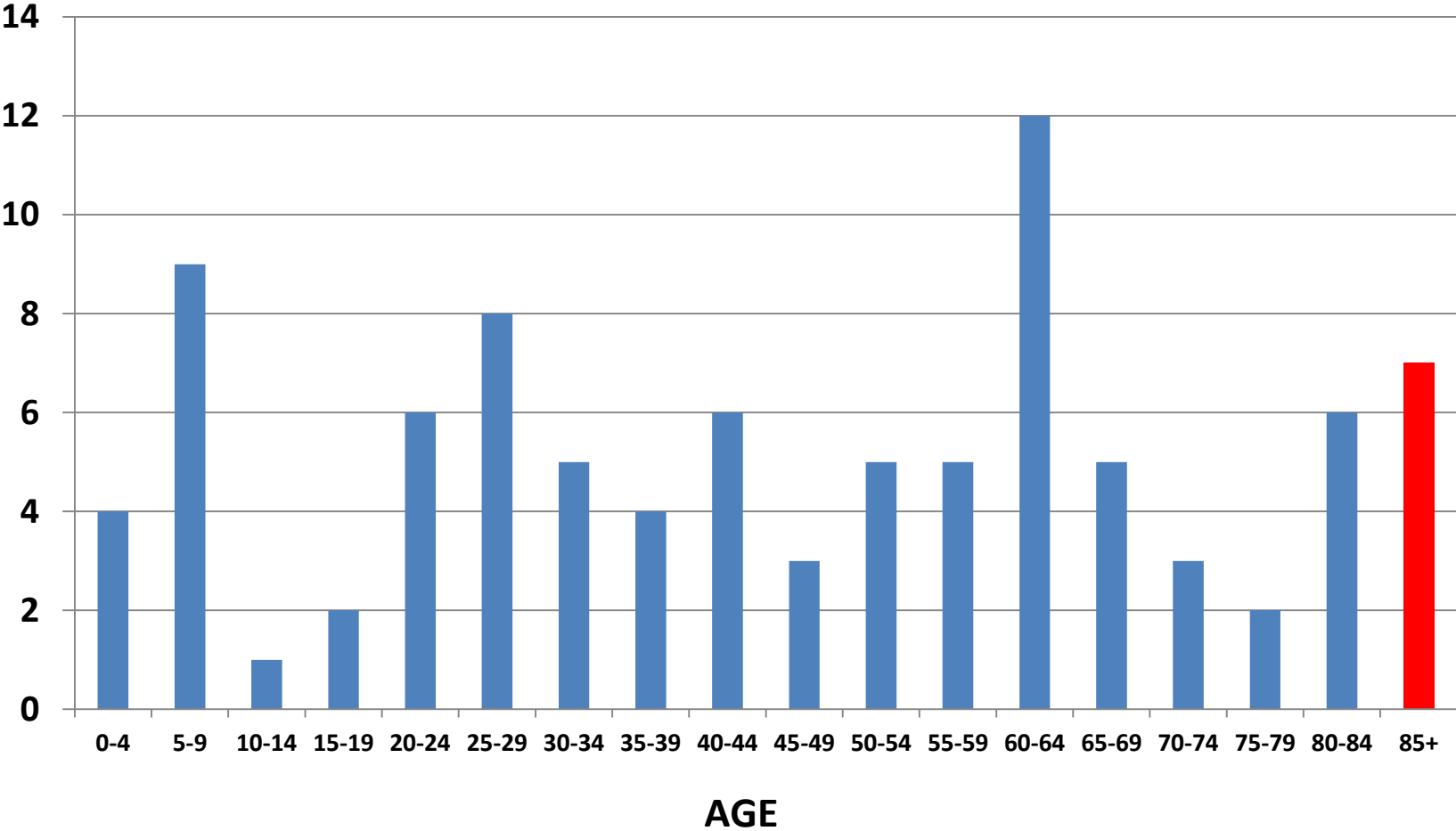


Figure 7: Age Distribution, Arkansas TB Cases, 2015

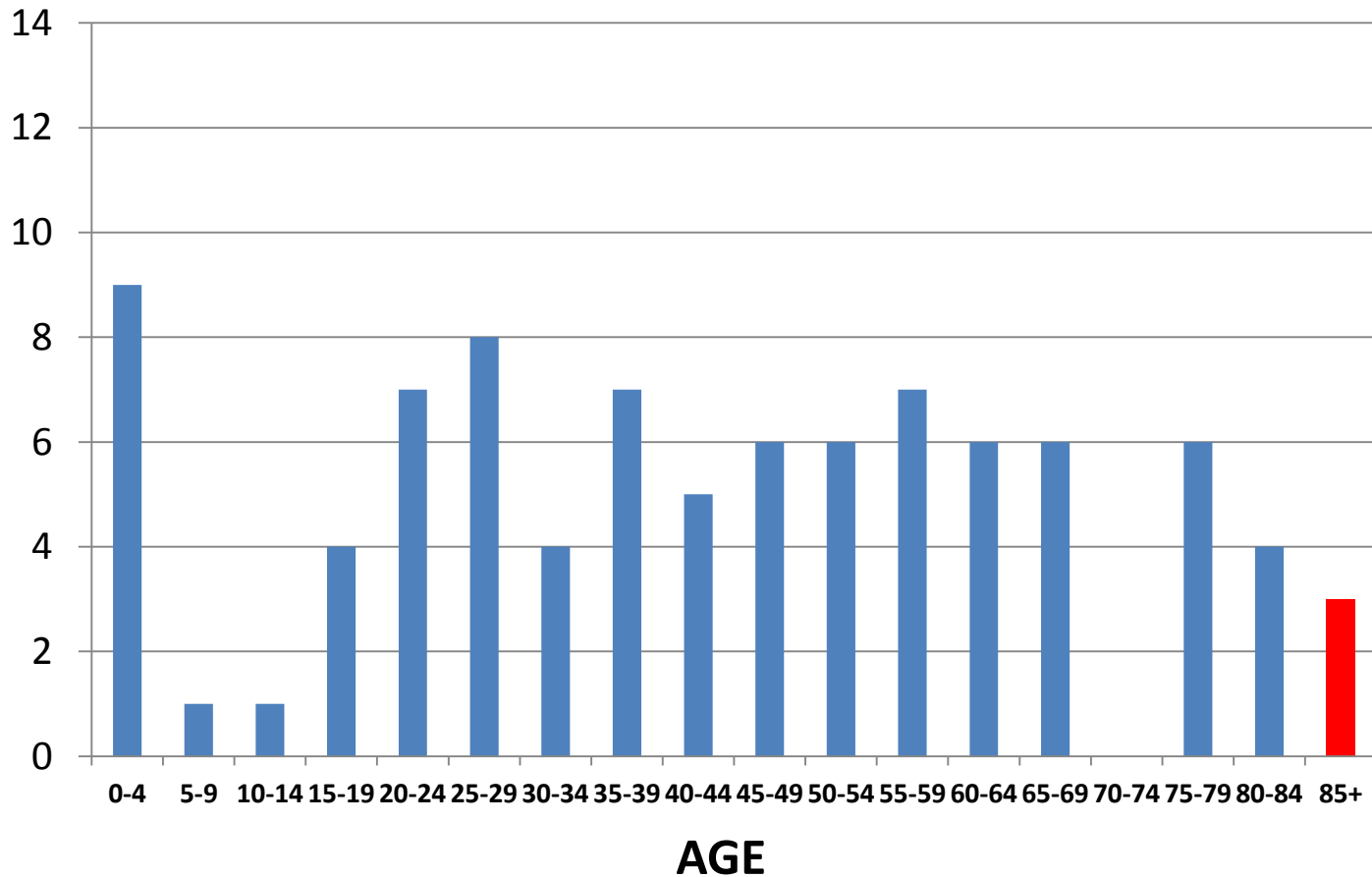


Figure 8: TB Cases by Race and Ethnicity, 2015

(N = 90)

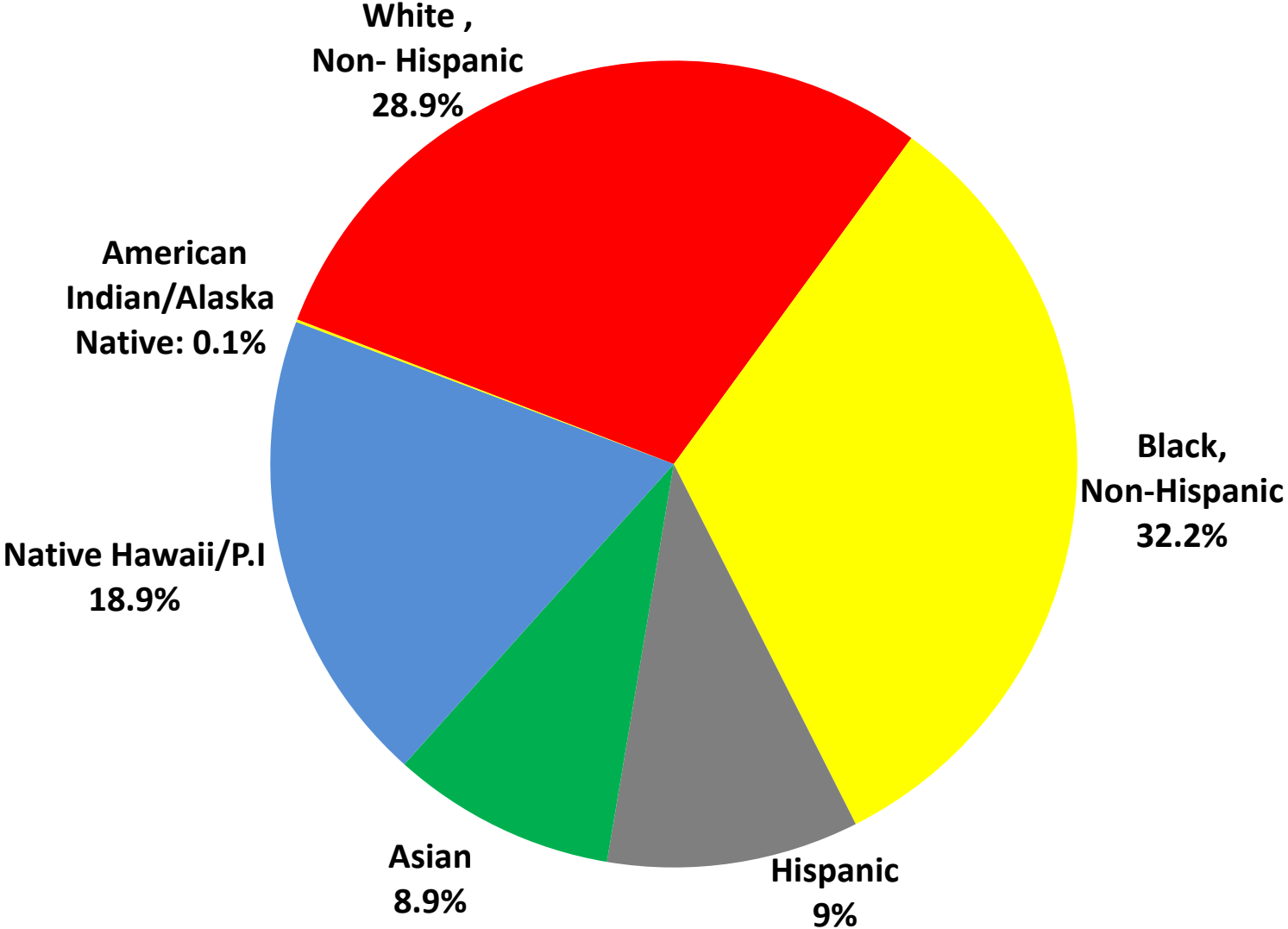
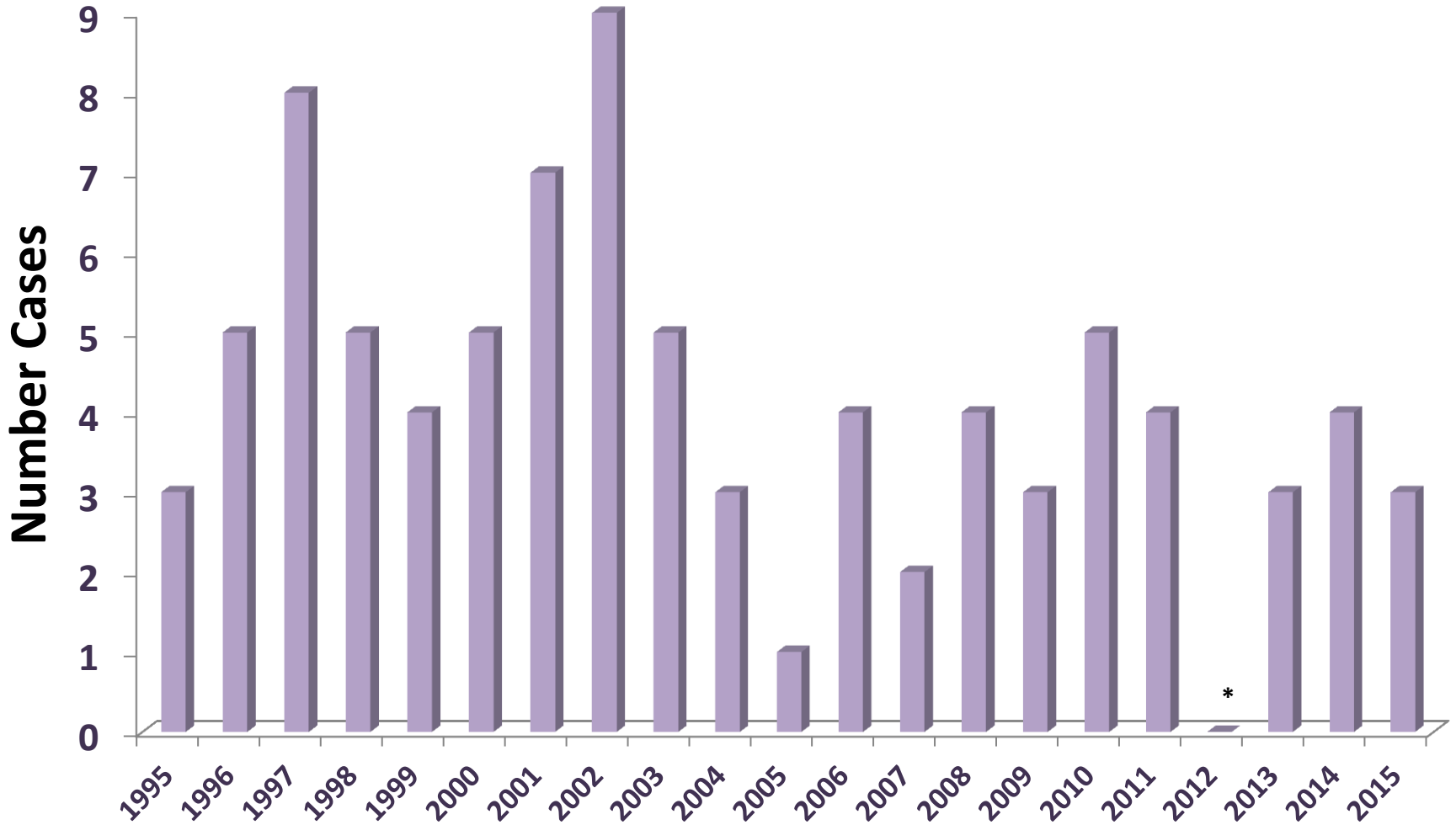


Figure 9: TB - HIV Cases, Arkansas, 1995-2015



* TB-HIV Cases =0

Figure 10: TB Cases, by Gender, Arkansas, 2004-2015

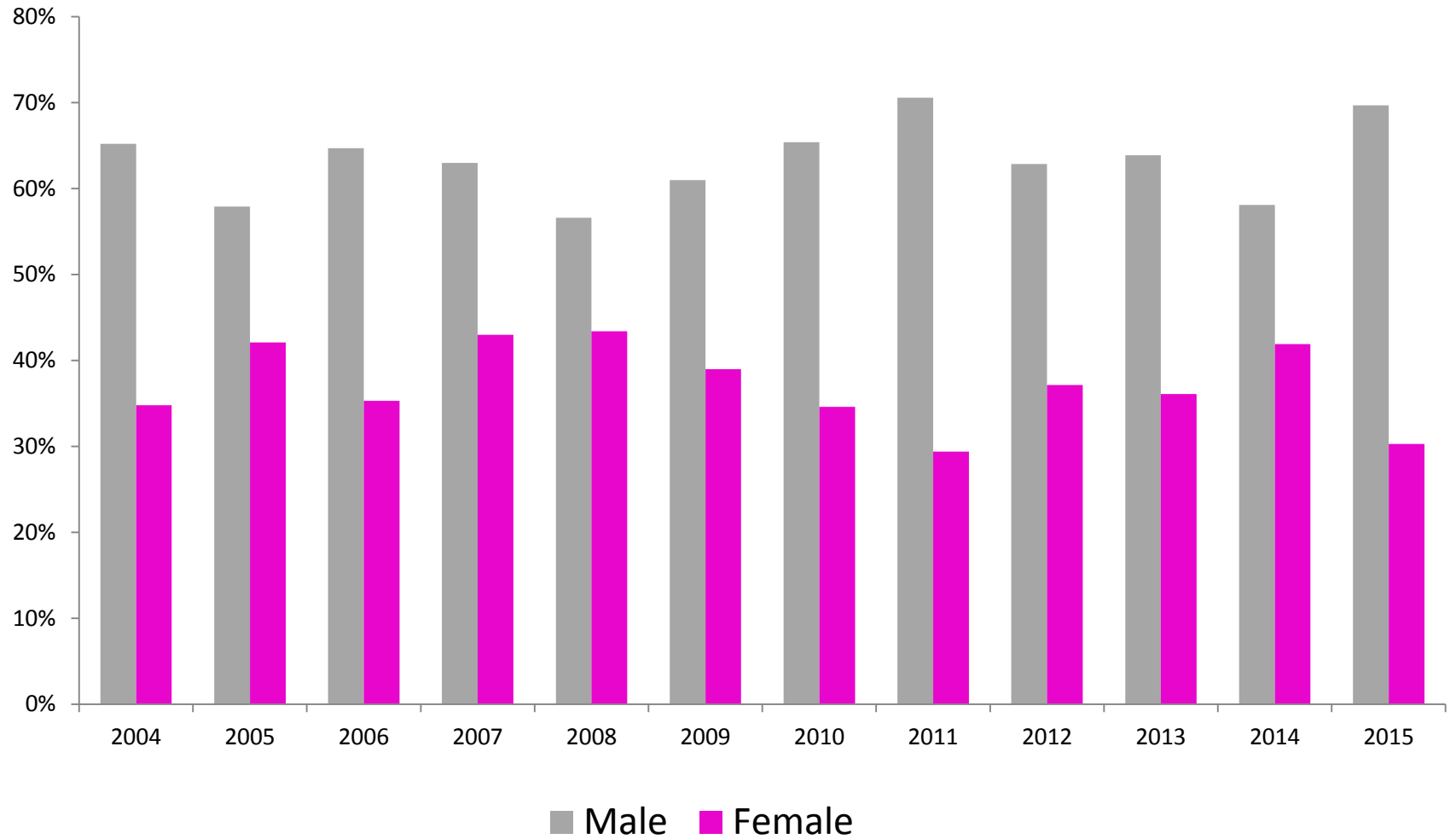


Table 1a: TB Cases, Arkansas, 2014 and 2015

2014 Cases				2015 Cases			
Region	Total	Culture	Clinical	Region	Total	Culture	Clinical
NW	48	25	23	NW	33	20	13
NE	9	7	2	NE	14	11	3
Central	14	12	2	Central	23	18	5
SE	8	5	3	SE	3	2	1
SW	14	13	1	SW	17	13	4
Total	93	62 (66.7%)	31 (33.3%)	Total	90	64 (71.1%)	26 (28.9%)

Table 1b

Characteristics	2014	2015
Gender:		
Male	54	63
Female	39	27
Race/Ethnicity:		
White, Non-Hispanic	25	26
Black, Non-Hispanic	22	29
Hispanic	12	10
Asian	10	8
Native Hawaii/PI	23	17
America Indian/Alaskan	1	0
Age Group (years):		
0-4	4	9
5-15	10	2
16-64	56	60
65+	23	19
County of Origin:		
U.S	58	59
Foreign-born	35	31

Table 1c

Characteristics	2014	2015
Any Primary Drug resistance (% culture positive):	5 (9.6)	2 (3.1)
Drugs:		
Isoniazid	2	1
Rifampin	0	0
Ethambutol	0	0
Pyrazinamide	3	1
Streptomycin*	1	2
MDR-TB:	0	0
HIV Positive:	4	3
Nursing Home:	3	1
Homeless	5	4
Prison	1	0

* Streptomycin excluded from primary drugs.

Table 2: TB Case Rates*, by Region, Arkansas, 2010-2015

Region	2010	2011	2012	2013	2014	2015
Northwest	2.9	2.7	3.6	3.0	4.8	3.2
Northeast	2.4	2.4	2.5	1.3	1.6	2.5
Central	2.1	2.5	1.7	2.1	1.7	2.7
Southeast	4.0	4.8	2.3	3.4	3.1	1.3
Southwest	2.7	3.9	2.7	2.8	4.3	5.3
State	2.7	2.9	2.4	2.4	3.1	3.0

*** Cases /100,000 population**

Figure 11: TB cases in Northwest Region, by Country of Birth, Arkansas, 2002-2015

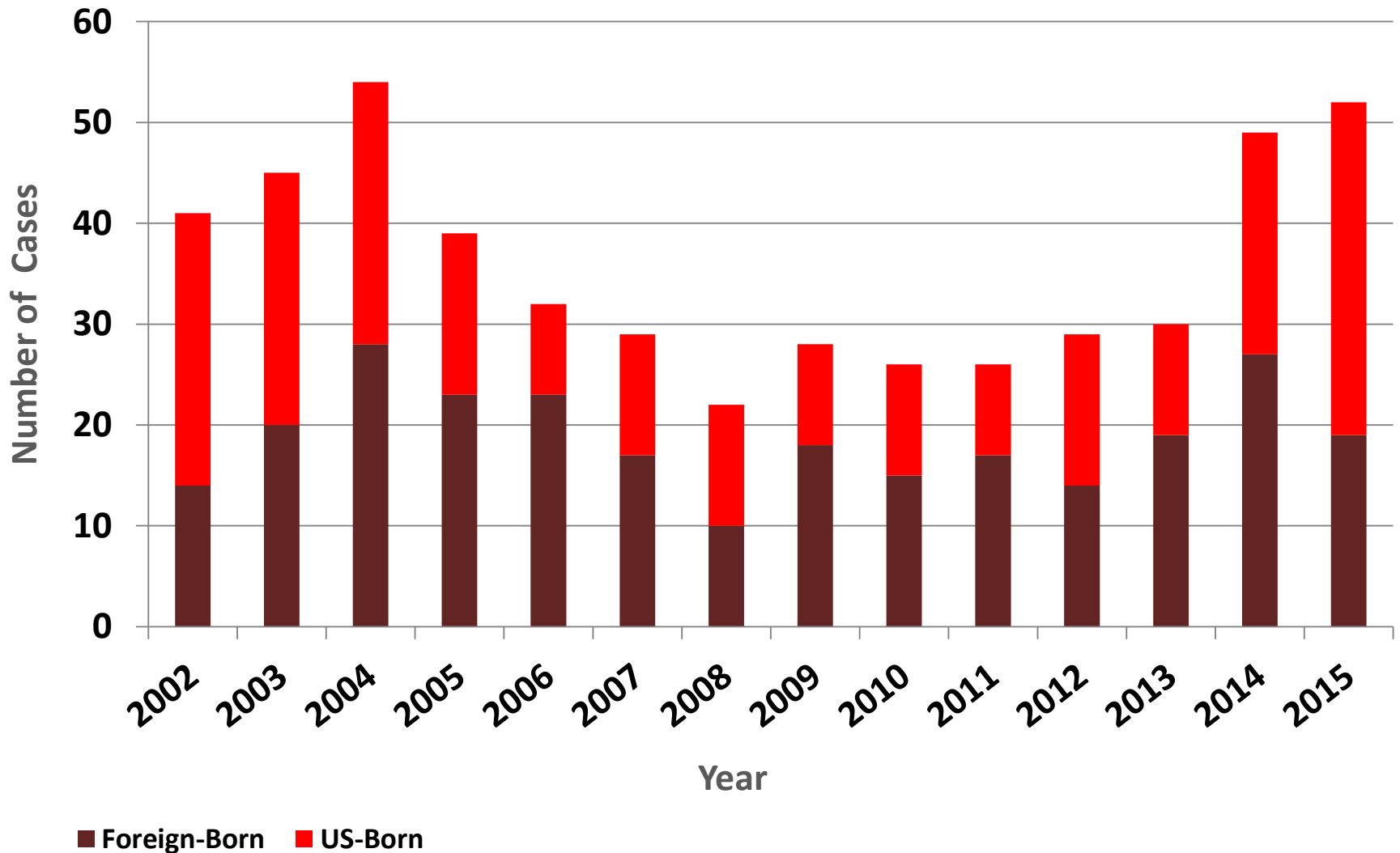


Figure 12: TB cases in Northeast Region, by Country of Birth, Arkansas, 2002-2015

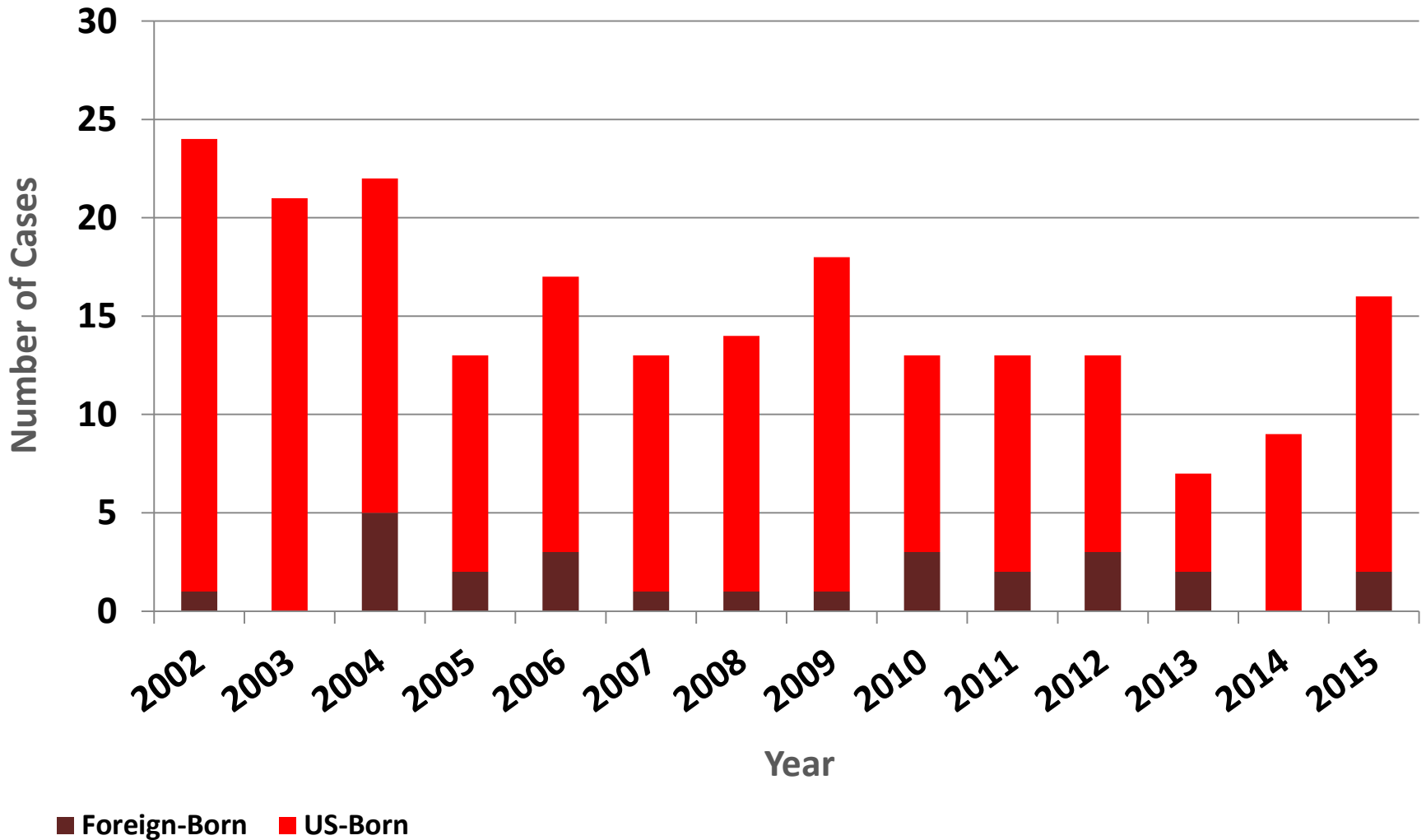


Figure 13: TB Cases in Central Region, by Country of Birth, Arkansas, 2002 - 2015

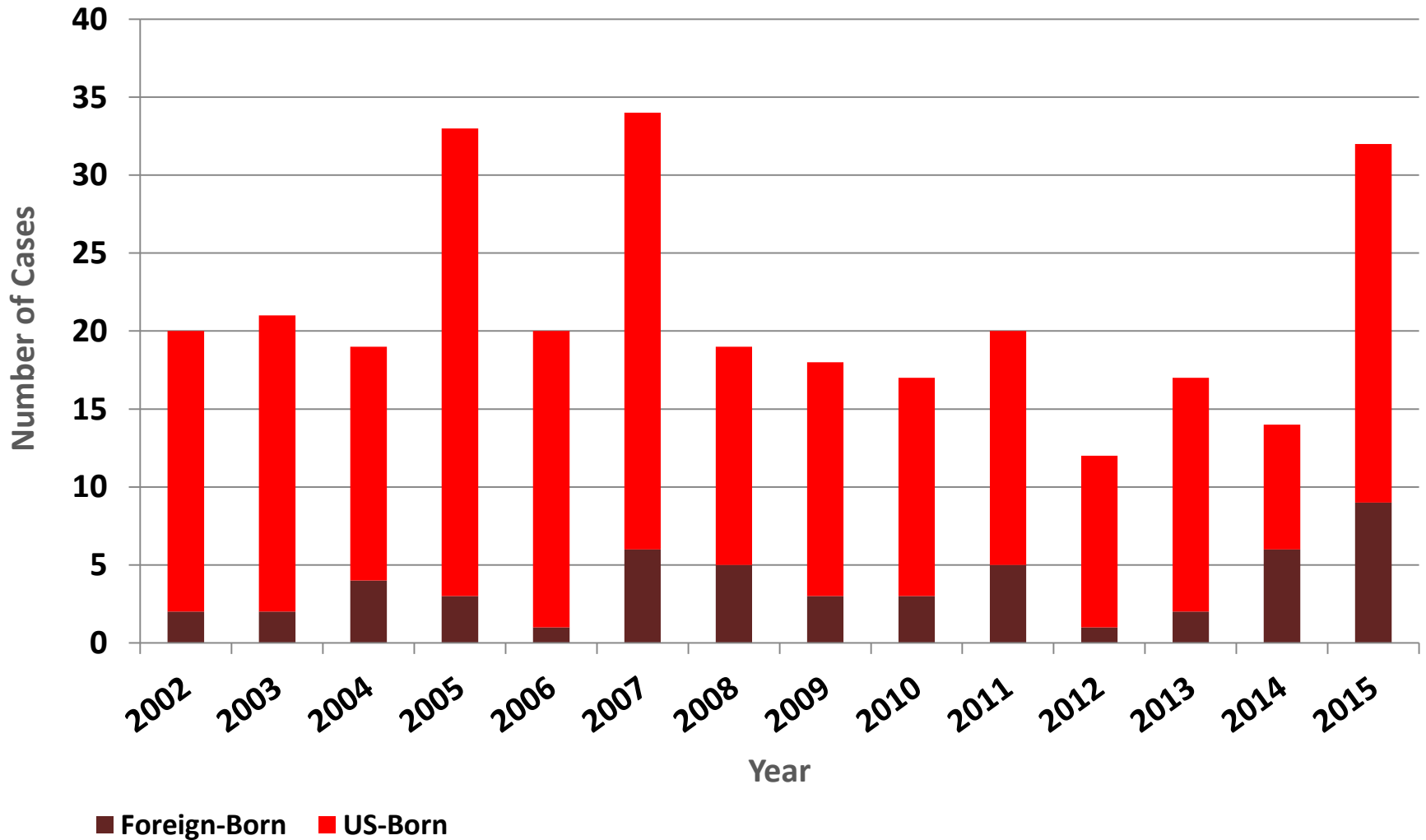


Figure 14: TB Cases in Southeast Region, by Country of Birth, Arkansas, 2002-2015

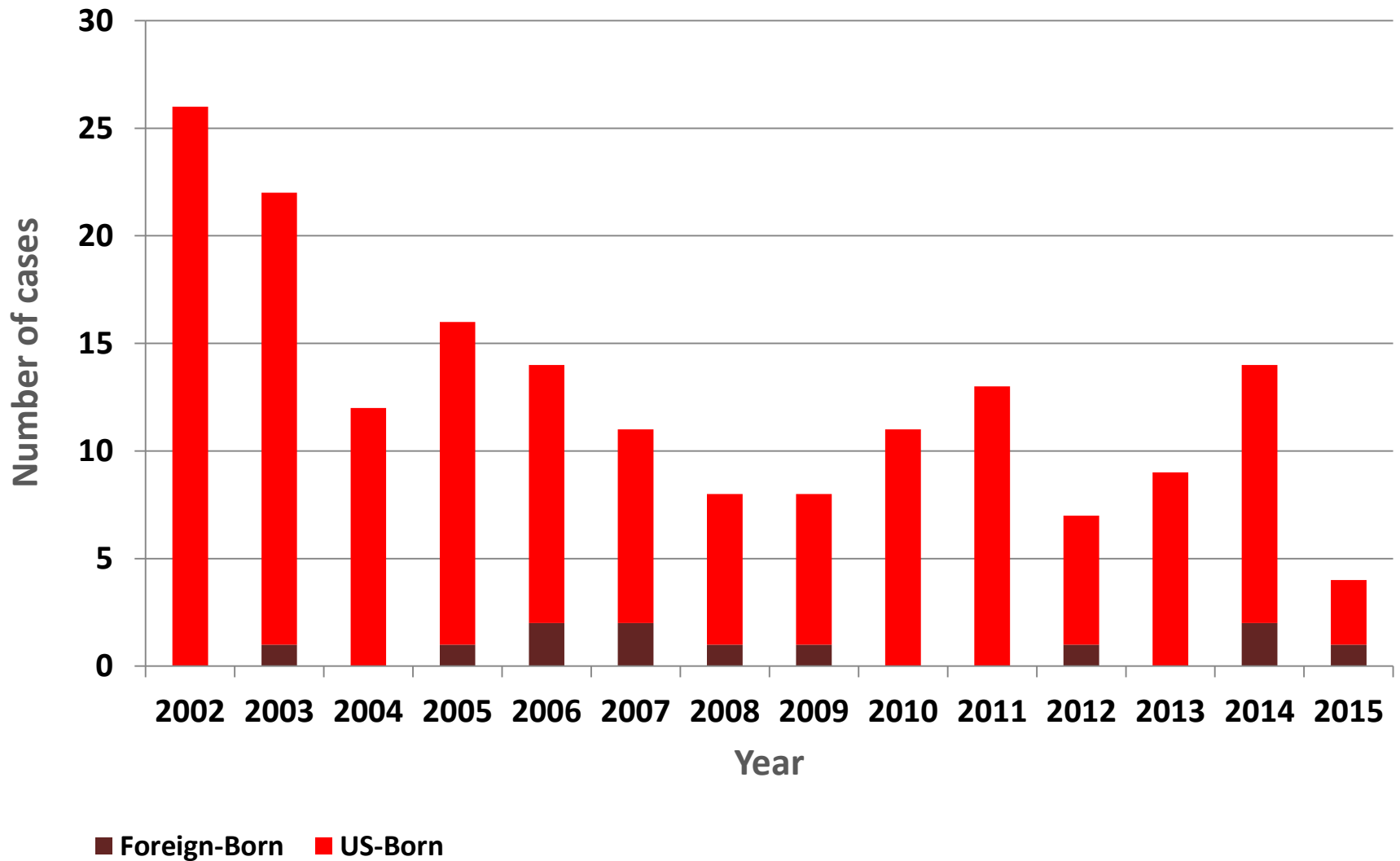


Figure 15: TB cases in Southwest Region, by Country of Birth, Arkansas, 2002-2015

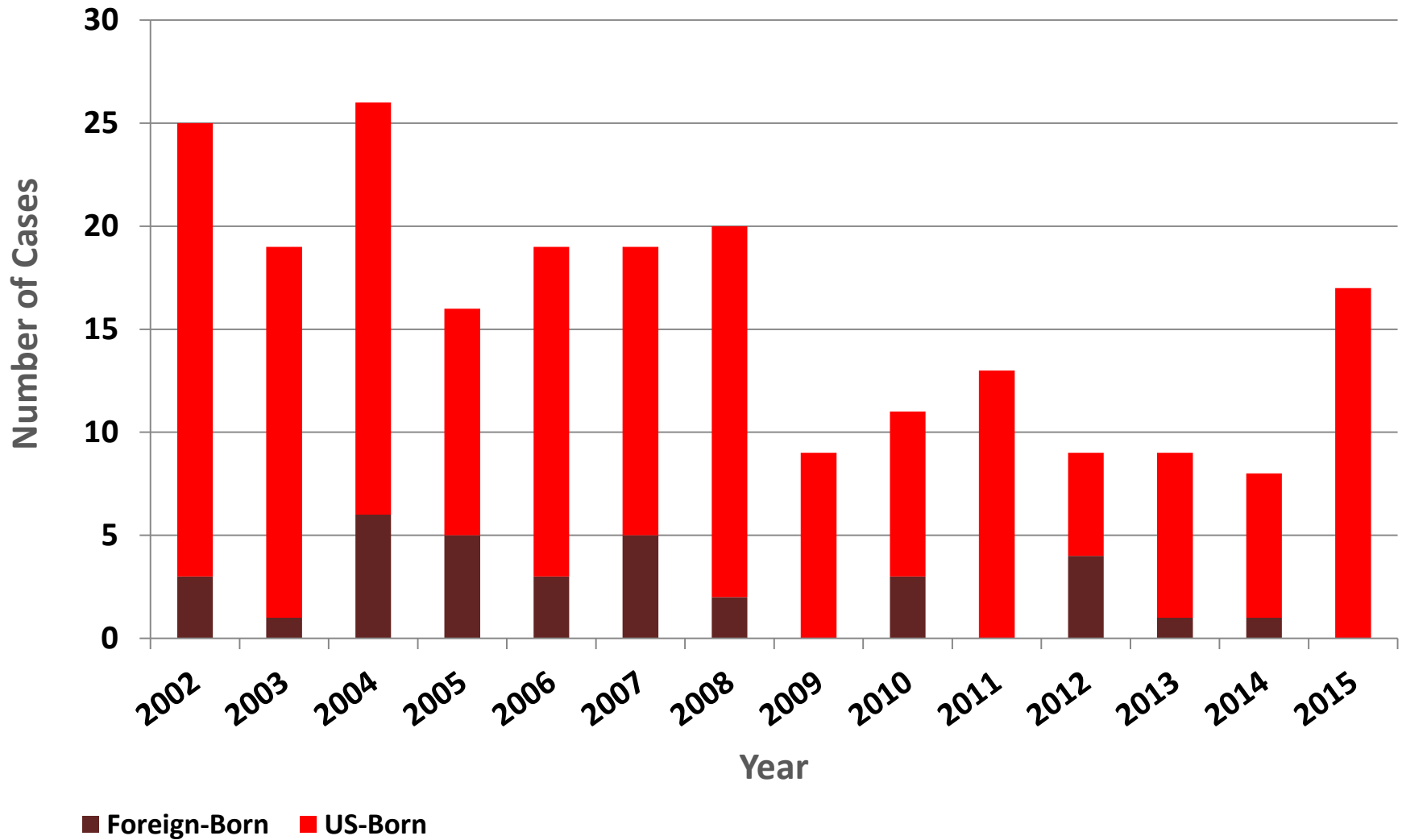


Figure 16: TB Cases Among Hispanics, by Country of Birth, Arkansas, 1996-2015

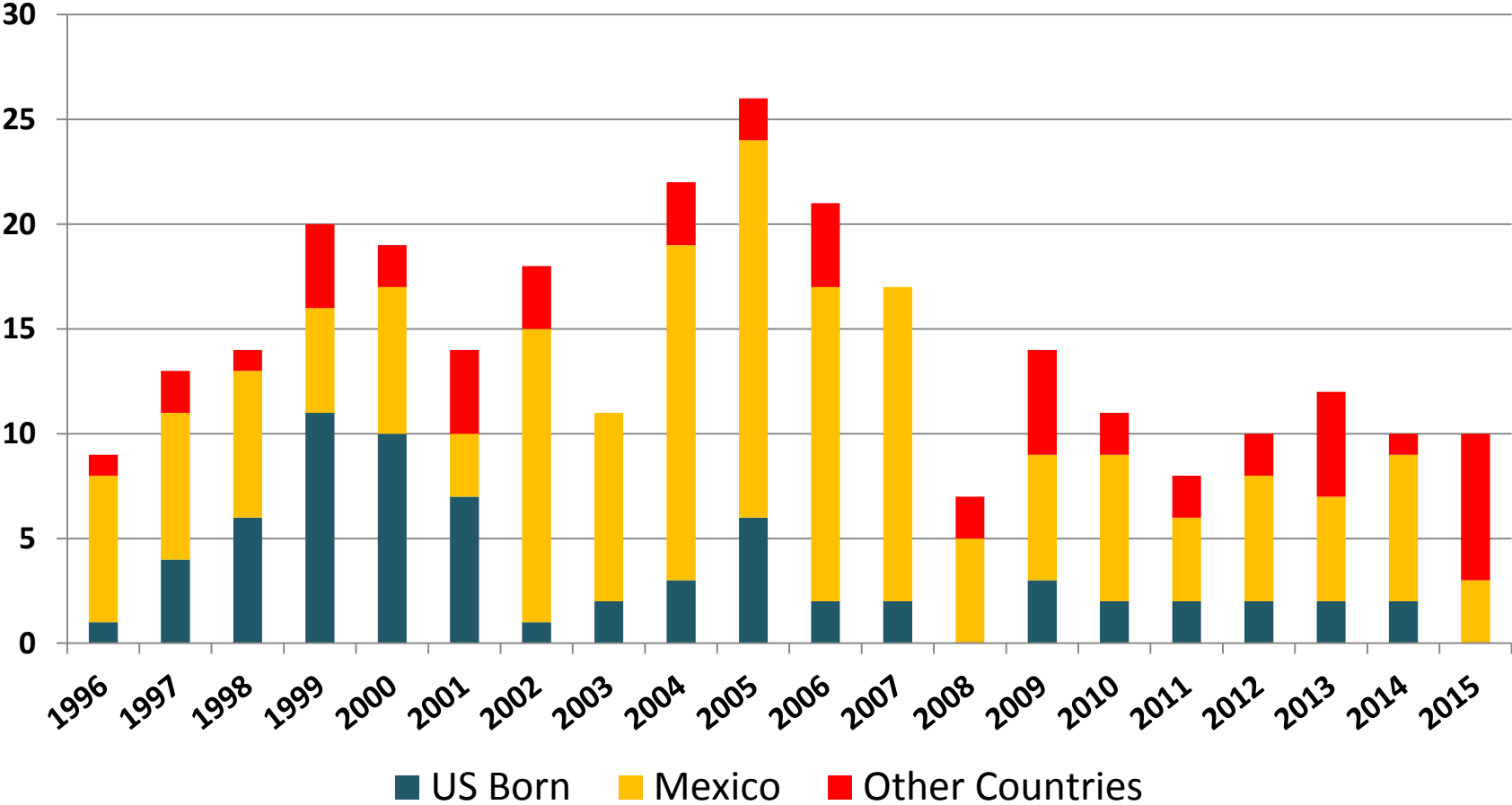


Figure 17: TB Cases, Age 80 Years and Over, Arkansas, 1995-2015

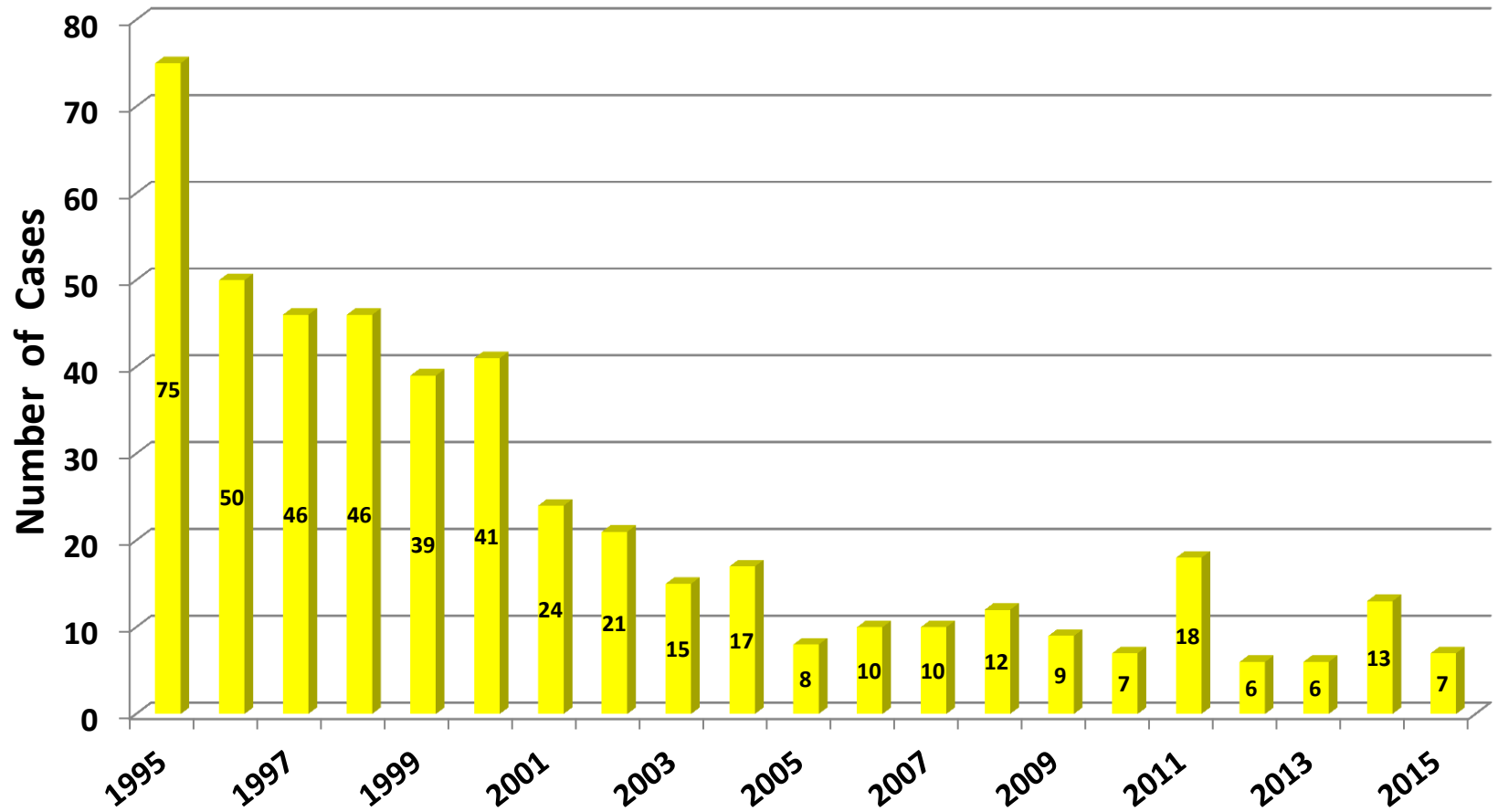


Figure 18: TB Cases in Homeless, Arkansas, 1998-2015

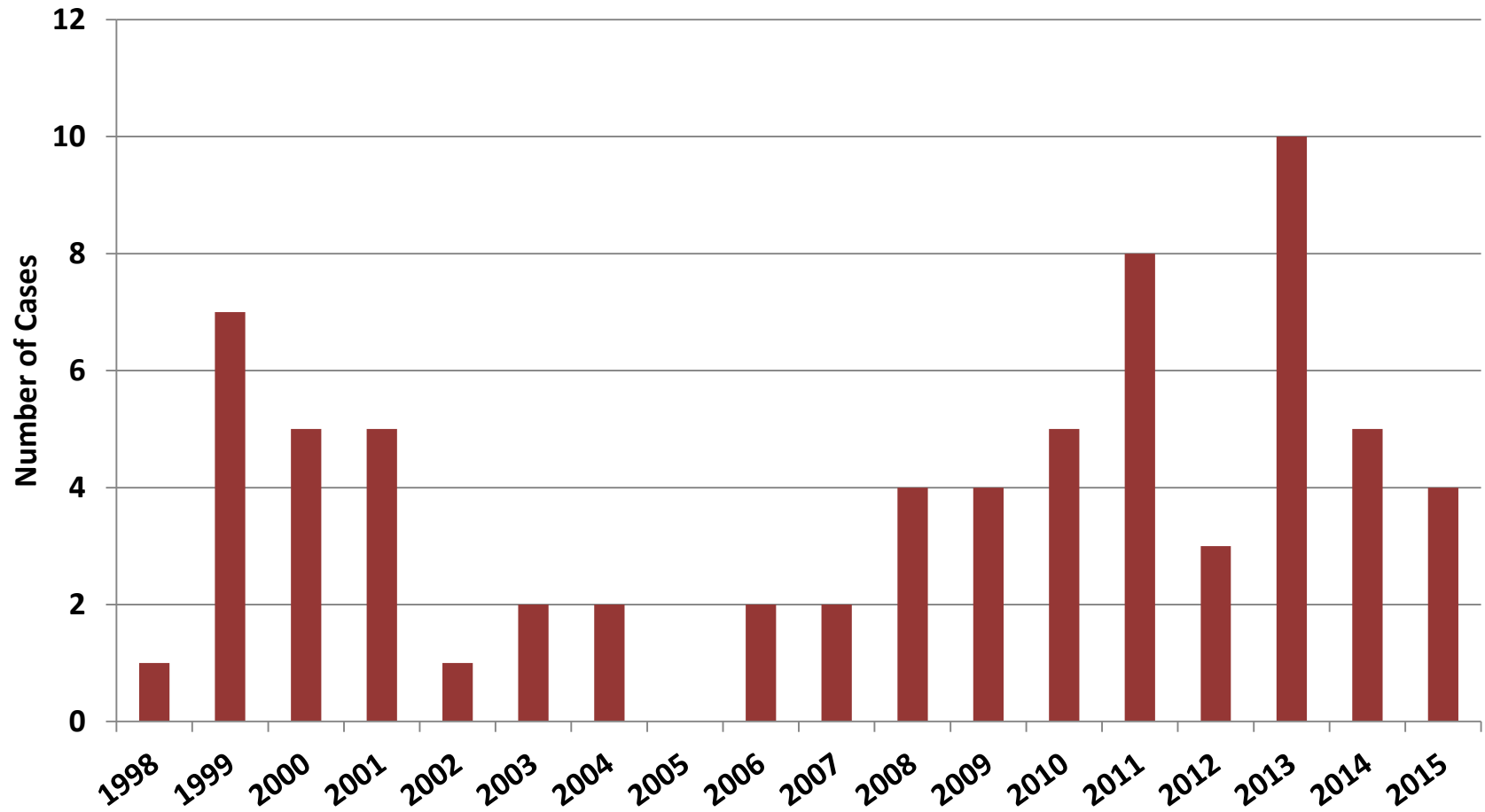


Figure 19: TB in Children, Arkansas, 2005-2015

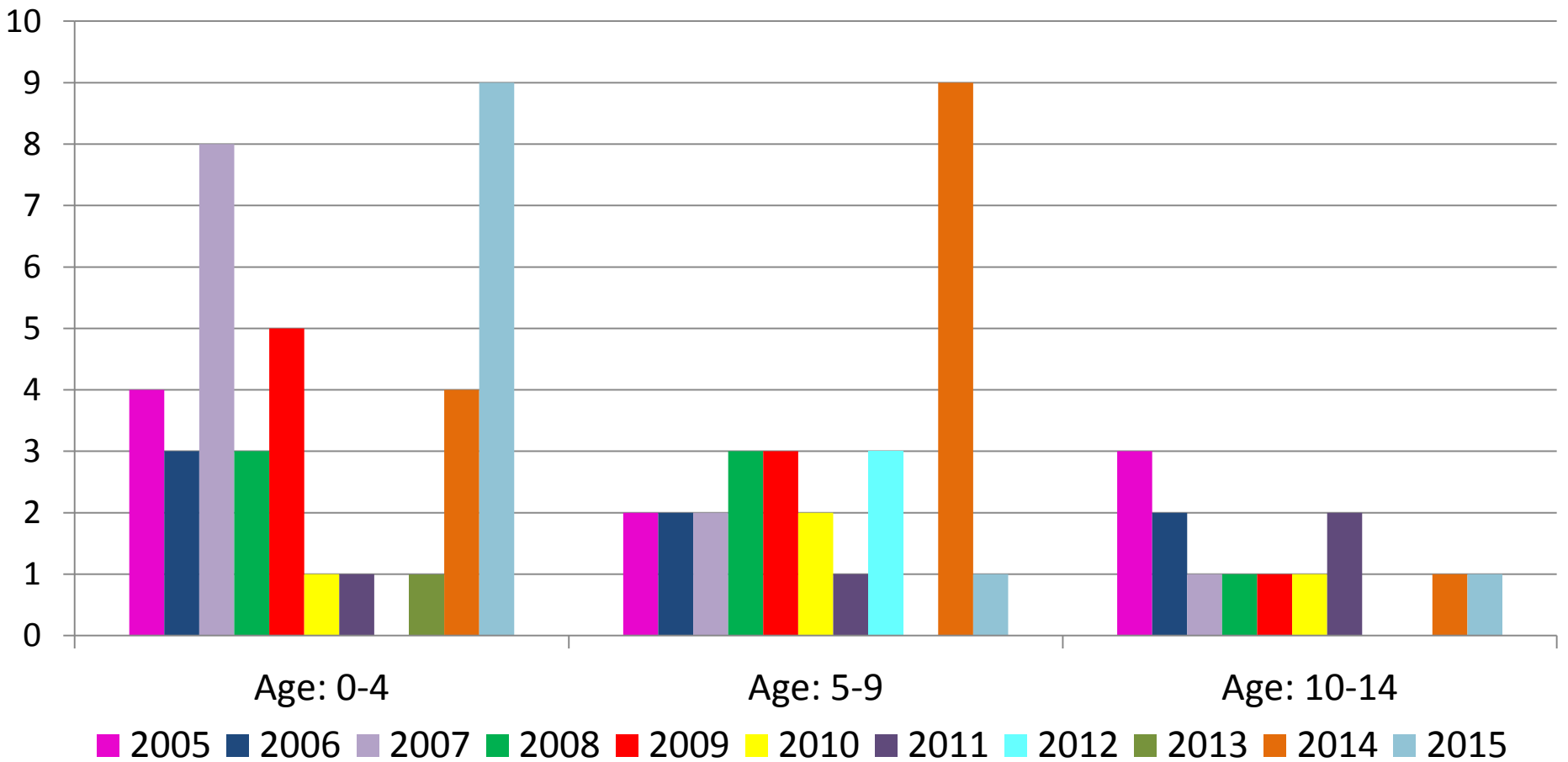


Table 3: TB Drug Resistance, Arkansas, 1997-2015

Year	INH	RIF	EMB	SM	PZA	MDR-TB
1997	3	0	0	0	--	0
1998	3	0	1	1	--	0
1999	7	1	0	2	--	0
2000	2	0	0	1	--	0
2001	4	0	0	2	--	0
2002	2	1	0	4	--	1
2003	1	0	0	0	1	0
2004	2	0	0	1	1	0
2005	3	0	0	4	1	0
2006	0	0	0	0	0	0
2007	6	3	1	1	5	3
2008	3	0	0	4	0	0
2009	2	1	0	2	2	1
2010	1	0	0	1	1	0
2011	4	2	1	2	2	1
2012	6	0	0	3	1	0
2013	1	0	0	0	4	0
2014	2	0	0	1	3	0
2015	1	0	0	2	1	0
TOTAL	64	8	5	35	21	9

**Table 4: TB Cases By County, Central and Northeast Regions,
Arkansas, 1998-2015**

Central Region Counties	1998	1999	2000	2001	2002	2003	2004	2005	2006	2007	2008	2009	2010	2011	2012	2013	2014	2015
FAULKNER	1	4	3	2	0	0	3	2	0	1	0	1	2	1	4	2	0	1
GARLAND	13	4	3	6	2	4	3	8	9	1	3	3	1	1	1	0	2	2
GRANT	1	1	2	0	1	0	0	0	0	0	0	0	0	0	0	0	0	1
LONOKE	2	4	0	4	1	1	0	2	3	1	2	1	2	0	1	1	0	0
PERRY	0	0	0	0	0	0	0	0	0	0	0	1	0	0	0	0	0	0
PULASKI	16	14	16	16	15	13	10	16	8	27	13	14	12	15	6	14	10	17
SALINE	1	2	2	2	1	3	2	1	0	2	1	0	0	2	0	0	2	2
Central Region Totals	34	29	26	30	20	21	18	29	20	32	19	20	17	19	12	17	14	23

Northeast Region Counties	1998	1999	2000	2001	2002	2003	2004	2005	2006	2007	2008	2009	2010	2011	2012	2013	2014	2015
CLAY	1	0	1	3	0	1	2	0	0	0	0	0	0	1	0	1	1	2
CLEBURNE	0	1	1	1	1	0	0	0	0	1	1	1	0	0	0	0	0	0
CRAIGHEAD	4	3	3	1	1	2	2	3	4	4	5	3	2	2	4	2	3	4
CRITTENDEN	1	1	5	11	8	6	4	2	5	6	1	5	4	1	1	0	1	3
CROSS	2	1	1	1	1	0	1	1	2	1	0	0	0	2	0	0	0	0
FULTON	0	0	0	0	0	0	0	0	0	0	0	0	1	0	0	0	0	1
GREENE	1	5	3	2	3	2	2	1	1	0	1	0	1	0	2	0	1	0
INDEPENDENCE	3	4	2	2	3	2	3	1	2	1	1	1	2	3	3	1	0	0
IZARD	1	1	0	1	0	0	0	0	0	0	2	0	0	0	0	0	0	0
JACKSON	3	4	0	0	1	1	0	2	2	0	0	1	1	0	0	0	1	0
LAWRENCE	3	3	3	0	1	0	0	0	0	0	1	1	1	0	0	0	1	0
MISSISSIPPI	12	10	6	4	2	2	3	0	1	1	1	3	0	2	0	1	1	4
POINSETT	2	1	1	2	0	2	0	3	1	1	1	1	0	0	0	1	0	0
RANDOLPH	2	4	1	2	1	0	1	1	0	0	0	0	0	0	0	0	0	0
SHARP	2	3	0	0	0	2	0	0	0	0	0	0	0	1	1	0	0	0
STONE	1	1	3	2	0	1	1	1	0	0	0	0	0	0	1	0	0	0
WHITE	5	4	4	1	2	0	3	0	0	0	1	1	1	1	1	1	0	0
WOODRUFF	0	0	1	2	0	0	0	1	0	0	0	0	0	0	0	0	0	0
Northeast Region Totals	43	46	35	35	24	21	22	16	18	15	15	17	13	13	13	7	9	14

State Total	171	181	199	162	136	127	132	114	102	106	83	82	78	85	70	72	93	90
--------------------	------------	------------	------------	------------	------------	------------	------------	------------	------------	------------	-----------	-----------	-----------	-----------	-----------	-----------	-----------	-----------

**Table 5: TB Cases By County, Northwest Region,
Arkansas, 1998-2015**

Northwest Region Counties	1998	1999	2000	2001	2002	2003	2004	2005	2006	2007	2008	2009	2010	2011	2012	2013	2014	2015
BAXTER	2	0	1	1	0	1	0	1	1	0	0	1	2	0	0	0	1	1
BENTON	7	7	9	8	2	3	8	0	7	6	1	7	2	4	14	6	7	2
BOONE	1	0	2	1	1	4	0	0	0	1	0	2	3	0	0	0	0	1
CARROLL	0	1	4	2	3	1	2	1	2	1	0	0	0	2	1	0	3	0
CONWAY	1	0	2	0	1	1	1	0	0	1	0	0	0	0	0	0	0	0
CRAWFORD	2	4	2	0	3	2	1	2	0	0	0	0	0	0	0	0	1	0
FRANKLIN	0	1	0	0	1	0	0	0	1	0	0	0	1	0	0	1	0	0
JOHNSON	1	2	0	0	1	0	1	0	0	2	0	0	1	0	0	0	0	0
LOGAN	0	0	0	0	2	1	0	1	0	0	0	0	0	0	0	0	1	0
MADISON	1	0	1	0	1	0	0	1	0	0	0	0	0	0	0	0	0	0
MARION	3	0	0	0	0	0	1	0	0	0	0	0	0	1	0	0	0	0
NEWTON	0	1	0	0	0	0	0	1	0	0	1	0	0	0	0	0	0	0
POPE	2	2	3	3	1	0	1	2	1	1	1	0	3	1	0	1	0	1
SCOTT	0	1	1	1	0	0	0	0	0	1	0	0	0	0	0	0	0	0
SEARCY	1	0	0	0	0	0	1	0	0	0	0	1	0	0	0	0	0	0
SEBASTIAN	5	6	6	5	11	9	4	7	8	4	3	5	6	3	4	4	6	1
VAN BUREN	0	0	0	1	0	0	0	0	0	0	0	0	0	0	0	1	0	0
WASHINGTON	14	12	28	26	13	18	34	20	12	11	14	11	9	16	10	16	29	27
YELL	0	2	0	1	1	4	0	3	2	2	3	1	1	0	0	1	0	0
Northwest Region Totals	40	39	59	49	41	44	54	39	34	30	23	28	28	27	29	30	48	33

State Totals	171	181	199	162	136	127	132	114	102	106	83	82	78	85	70	72	93	90
---------------------	------------	------------	------------	------------	------------	------------	------------	------------	------------	------------	-----------	-----------	-----------	-----------	-----------	-----------	-----------	-----------

**Table 6: TB Cases By County, Southeast Region,
Arkansas, 1998-2015**

Southeast Region Counties	1998	1999	2000	2001	2002	2003	2004	2005	2006	2007	2008	2009	2010	2011	2012	2013	2014	2015
ARKANSAS	2	3	2	0	1	0	1	1	1	3	1	0	0	0	0	0	0	0
ASHLEY	2	0	2	1	1	1	0	0	0	0	1	0	1	0	0	0	0	0
BRADLEY	2	1	0	1	0	0	0	0	1	1	1	1	0	1	1	1	1	2
CHICOT	2	2	2	0	0	1	0	0	0	0	0	0	1	0	0	1	1	1
CLEVELAND	0	0	0	0	0	0	0	0	0	0	0	1	0	0	0	0	0	0
DESHA	0	4	1	2	4	0	1	1	0	0	0	0	2	4	2	2	2	0
DREW	1	1	1	1	1	0	1	1	0	0	0	0	1	1	0	0	0	0
JEFFERSON	10	5	8	7	4	4	3	3	4	3	0	1	3	3	2	2	0	0
LEE	0	1	2	0	1	1	0	0	1	0	0	0	0	1	1	0	1	0
LINCOLN	4	2	0	2	1	0	0	0	2	0	1	1	1	2	1	0	1	0
MONROE	1	4	1	2	0	0	3	3	2	0	1	1	1	0	0	0	0	0
PHILLIPS	4	2	0	0	2	1	2	2	0	0	0	1	0	1	0	0	0	0
PRAIRIE	0	2	1	0	0	0	0	0	0	0	0	0	0	0	0	0	0	0
ST. FRANCIS	6	29	5	10	7	4	3	3	1	2	2	2	1	0	0	3	2	0
Southeast Region Totals	34	56	25	26	22	12	14	14	12	9	7	8	11	13	7	9	8	3

State Totals	171	181	199	162	136	127	132	114	102	106	83	82	78	85	70	72	93	90
---------------------	------------	------------	------------	------------	------------	------------	------------	------------	------------	------------	-----------	-----------	-----------	-----------	-----------	-----------	-----------	-----------

**Table 7: TB Cases By County, Southwest Region,
Arkansas, 1998-2015**

Counties	1998	1999	2000	2001	2002	2003	2004	2005	2006	2007	2008	2009	2010	2011	2012	2013	2014	2015
CALHOUN	0	0	1	1	0	0	0	1	1	0	0	0	0	0	1	0	0	1
CLARK	2	1	3	1	1	2	1	2	0	2	1	2	0	0	2	0	1	1
COLUMBIA	8	4	0	4	3	0	5	2	3	4	2	1	0	1	0	0	1	1
DALLAS	1	1	0	0	1	0	1	0	0	0	0	1	1	0	0	0	0	0
HEMPSTEAD	0	2	0	2	1	0	1	1	0	5	0	1	0	0	1	1	3	5
HOT SPRING	3	0	0	0	0	0	1	4	1	2	0	0	1	0	1	1	0	0
HOWARD	5	2	0	3	2	4	1	1	2	1	1	0	0	0	1	0	1	5
LAFAYETTE	0	0	0	1	2	0	0	0	0	1	1	1	1	0	0	0	1	1
LITTLE RIVER	1	1	0	1	3	0	3	0	0	0	0	0	0	1	1	0	2	0
MILLER	2	3	3	3	2	2	1	1	3	3	5	0	0	2	0	1	0	2
MONTGOMERY	0	0	0	0	0	1	0	0	0	0	0	0	3	0	0	0	0	0
NEVADA	0	0	0	2	0	0	0	0	1	0	3	1	0	0	0	0	0	0
OUACHITA	5	2	2	2	2	2	1	0	1	2	1	0	0	1	0	2	0	0
PIKE	1	3	2	0	3	1	1	0	1	0	0	0	0	3	0	0	0	0
POLK	0	0	0	0	1	0	1	1	0	0	0	1	0	0	0	0	0	1
SEVIER	0	6	1	0	1	3	6	2	3	0	3	0	2	3	0	3	1	0
UNION	4	8	11	3	3	4	3	1	2	0	2	1	1	2	2	1	2	0
Southwest Region Totals	32	33	23	23	25	19	26	16	18	20	19	9	9	10	9	9	12	17

State Totals	171	181	199	162	136	127	132	114	102	106	83	82	82	78	85	72	93	90
---------------------	------------	------------	------------	------------	------------	------------	------------	------------	------------	------------	-----------	-----------	-----------	-----------	-----------	-----------	-----------	-----------

Table 8: TB Case Rates By County, Central and Northeast Regions, Arkansas, 1998-2015

Rate = Cases per 100,000 Population

Counties	1998	1999	2000	2001	2002	2003	2004	2005	2006	2007	2008	2009	2010	2011	2012	2013	2014	2015
FAULKNER	1.3	5.1	3.8	2.3	0	0	3.3	2.1	0	1	0	0.9	1.8	0.9	4.7	1.7	0	0.8
GARLAND	15.5	4.8	3.6	6.8	2.2	4.4	3.3	8.7	9.4	1	3.1	3	1.0	1.0	1.1	0.0	2.1	2.1
GRANT	6.3	6.3	12.6	0	5.9	0	0	0	0	0	0	0	0.0	0.0	0.0	0.0	0	5.5
LONOKE	4	8	0	7.6	1.8	1.8	0	3.4	4.9	1.6	3.1	1.5	2.9	0.0	1.9	1.4	0	0
PERRY	0	0	0	0	0	0	0	0	0	0	0	9.7	0.0	0.0	0.0	0.0	0	0
PULASKI	4.6	4	4.6	4.4	4.1	3.6	2.7	4.4	2.2	7.2	3.5	3.7	3.1	3.9	1.7	3.6	2.5	12.0
SALINE	1.3	2.6	2.6	2.4	1.1	3.5	2.3	1.1	0	2.1	1	0	0.0	1.9	0.0	0.0	1.7	1.7
Central Region Rate	5.1	4.4	3.9	4.3	2.8	2.9	2.5	3.9	2.7	4.2	2.6	2.6	2.1	2.5	1.7	2.1	1.7	2.7

Counties	1998	1999	2000	2001	2002	2003	2004	2005	2006	2007	2008	2009	2010	2011	2012	2013	2014	2015
CLAY	5.8	0	5.8	17	0	5.8	11.8	0	0	0	0	0	0.0	6.2	0.0	6.5	6.6	13.2
CLEBURNE	0	4.4	4.4	4.2	4	0	0	0	0	3.9	3.9	3.9	0.0	0.0	0.0	0.0	0	0
CRAIGHEAD	5.2	3.9	3.9	1.2	1.2	2.4	2.4	3.5	4.5	4.4	5.4	3.1	2.1	2.1	4.9	2.0	2.9	3.8
CRITTENDEN	2	2	10	21.6	15.7	11.7	7.8	3.9	9.8	11.5	1.9	9.4	7.9	2.0	2.0	0.0	2.0	6.1
CROSS	10.2	5.1	5.1	5.1	5.1	0	5.2	5.2	10.3	5.4	0	0	0.0	11.2	0.0	0.0	0	0
FULTON	0	0	0	0	0	0	0	0	0	0	0	0	8.2	0.0	0.0	0.0	0	8.2
GREENE	2.8	13.8	8.3	5.4	7.8	5.3	5.2	2.6	2.5	0	2.5	0	2.4	0.0	5.4	0.0	2.3	0
INDEPENDENCE	9.1	12.1	6.1	5.8	8.6	5.8	8.7	2.9	5.5	2.9	2.9	2.9	5.5	8.2	8.8	2.7	0	0
IZARD	7.6	7.6	0	7.5	0	0	0	0	0	0	15.4	0	0.0	0.0	0.0	0.0	0	0
JACKSON	16.9	22.5	0	0	5.5	5.6	0	11.6	11.4	0	0	6	5.6	0.0	0.0	0.0	5.7	0
LAWRENCE	17.3	17.3	17.3	0	5.6	0	0	0	0	0	5.9	5.9	5.7	0.0	0.0	0.0	5.9	0
MISSISSIPPI	23.7	19.7	11.8	7.7	3.9	4	6.1	0	1.9	2.1	2.1	6.4	0.0	4.3	0.0	2.2	2.3	9.1
POINSETT	8.1	4	4	7.8	0	7.9	0	11.8	3.8	4	4	4	0.0	0.0	0.0	4.1	0	0
RANDOLPH	11.2	22.5	5.6	11	5.4	0	5.5	5.4	0	0	0	0	0.0	0.0	0.0	0.0	0	0
SHARP	11.8	17.7	0	0	0	11.6	0	0	0	0	0	0	0.0	5.8	5.8	0.0	0	0
STONE	9	9	26.9	17.4	0	8.7	8.6	8.5	0	0	0	0	0.0	0.0	8.7	0.0	0	0
WHITE	7.7	6.2	6.2	1.5	2.9	0	4.3	0	0	0	7.2	1.3	1.3	1.3	1.5	1.3	0	0
WOODRUFF	0	0	11.3	22.9	0	0	0	12.3	0	0	0	0	0.0	0.0	0.0	0.0	0	0
Northeast Region Rate	8.4	9	6.9	6.6	4.5	4	4.2	3.8	3.3	2.8	2.6	3.1	2.4	2.4	2.5	1.3	1.6	2.5

State Rate	6.7	7.1	7.8	6.1	5	4.7	4.8	4.1	3.6	3.7	2.9	2.8	2.7	2.9	2.4	2.4	3.1	3.0
-------------------	------------	------------	------------	------------	----------	------------	------------	------------	------------	------------	------------	------------	------------	------------	------------	------------	------------	------------

**Table 9: TB Case Rates By County, Northwest Region,
Arkansas, 1998-2015**

Rate = Cases per 100,000 Population

Counties	1998	1999	2000	2001	2002	2003	2004	2005	2006	2007	2008	2009	2010	2011	2012	2013	2014	2015
BAXTER	5.5	0	2.7	2.6	0	2.6	0	2.5	2.4	0	0	2.4	4.8	0.0	0.0	0.0	2.4	2.4
BENTON	5.2	5.2	6.7	5.2	1.2	1.8	4.7	0	3.7	3	0.5	3.1	0.9	1.8	9.1	2.5	2.9	0.8
BOONE	3.1	0	6.3	2.9	2.8	11.5	0	0	0	2.7	0	5.4	8.1	0.0	0.0	0.0	0	2.7
CARROLL	0	4.4	17.8	7.9	11.5	3.8	7.6	0	7.3	3.6	0	0	0.0	7.3	3.9	0.0	10.8	0.0
CONWAY	5	0	10	0	4.9	4.9	4.9	0	0	4.8	0	0	0.0	0.0	0.0	0.0	0	0.0
CRAWFORD	4	7.9	4	0	5.4	3.6	1.8	3.5	0	0	0	0	0.0	0.0	0.0	0.0	1.6	0.0
FRANKLIN	0	5.9	0	0	5.7	0	0	0	5.7	0	0	0	5.5	0.0	0.0	0.0	0	0.0
JOHNSON	4.7	9.3	0	0	4.4	0	4.2	0	0	8.1	0	0	3.9	0.0	0.0	0.0	0	0.0
LOGAN	0	0	0	0	8.7	4.5	0	4.4	0	0	0	0	0.0	0.0	0.0	0.0	4.6	0.0
MADISON	7.6	0	7.6	0	6.8	0	0	6.8	0	0	0	0	0.0	0.0	0.0	0.0	0	0.0
MARION	20.1	0	0	0	0	0	6.1	0	0	0	0	0	0.0	6.0	0.0	0.0	0	0.0
NEWTON	0	12.2	0	0	0	0	0	11.8	0	0	12.1	0	0.0	0.0	0.0	0.0	0	0.0
POPE	3.8	3.8	5.8	5.5	1.8	0	1.8	3.6	1.7	1.7	1.7	0	4.9	1.6	0.0	0.0	0	1.6
SCOTT	0	9.4	9.4	9.1	0	0	0	0	0	8.8	0	0	0.0	0.0	0.0	0.0	0	0.0
SEARCY	12.9	0	0	0	0	0	12.5	0	0	0	0	12.6	0.0	0.0	0.0	0.0	0	0.0
SEBASTIAN	4.7	5.7	5.7	4.3	9.3	7.7	3.4	5.9	6.4	3.3	2.5	4	4.8	2.4	3.5	3.1	4.7	0.8
VAN BUREN	0	0	0	6.2	0	0	0	0	0	0	0	0	0.0	0.0	0.0	5.9	0	0.0
WASHINGTON	10.1	8.7	20.2	16.5	7.8	10.8	20	11.5	6.6	5.7	7.2	5.5	4.4	7.9	6.3	7.4	13.1	12.
YELL	0	10.5	0	4.7	4.6	18.7	0	14.1	8.8	9.2	13.7	4.4	4.5	0.0	0.0	4.6	0	0.0
Northwest Region Rate	5.4	5.3	8	6	4.9	5.2	6.3	3.4	3.7	3.2	2.4	2.9	2.9	2.7	3.6	3.0	4.8	3.2

State Rate	6.7	7.1	7.8	6.1	5	4.7	4.87	4.1	3.6	3.7	2.9	2.8	2.7	2.9	2.4	2.4	3.1	3.0
-------------------	------------	------------	------------	------------	----------	------------	-------------	------------	------------	------------	------------	------------	------------	------------	------------	------------	------------	------------

**Table 10: TB Case Rates By County, Southeast Region,
Arkansas, 1998-2015**

Rate = Cases per 100,000 Population

Counties	1998	1999	2000	2001	2002	2003	2004	2005	2006	2007	2008	2009	2010	2011	2012	2013	2014	2015
ARKANSAS	14.4	9.6	14.4	9.6	0.0	4.9	0.0	5	5.2	15.5	5.2	0.0	0.0	0.0	0.0	0.0	0	0.0
ASHLEY	0.0	8.2	0.0	8.3	4.2	4.2	4.2	0.0	0.0	0.0	4.5	0.0	4.6	0.0	0.0	0.0	0	0.0
BRADLEY	0.0	17.5	8.7	0.0	7.8	0.0	0.0	0.0	7.6	8.3	8.4	8.5	0.0	8.7	7.9	8.9	9.0	18.0
CHICOT	6.7	13.5	13.5	14.2	0.0	0.0	7.4	0.0	0.0	0.0	0.0	0.0	8.5	0.0	0.0	8.8	8.9	9.1
CLEVELAND	23.7	0.0	0.0	0.0	0.0	0.0	0.0	0.0	0.0	0.0	0.0	11.9	0.0	0.0	0.0	0.0	0	0.0
DESHA	0.0	0.0	26.5	6.5	13.2	27	0.0	6.8	0.0	0.0	0.0	0.0	15.4	30.8	13.0	16.0	16.3	0.0
DREW	0.0	5.7	5.7	5.3	5.3	5.4	0.0	5.4	0.0	0.0	0.0	0.0	5.4	5.4	0.0	0.0	0	0.0
JEFFERSON	4.9	12.3	6.1	9.5	8.4	4.8	4.8	3.6	4.8	3.8	0.0	1.3	3.9	3.9	2.4	2.7	0	0.0
LEE	8.1	0.0	8.1	15.9	0.0	8.2	8.4	0.0	8.2	0.0	0.0	0.0	0.0	9.6	7.9	0.0	10.1	0.0
LINCOLN	7	28	14	0.0	13.8	7	0.0	0.0	13.8	0.0	7.3	7.4	7.1	14.2	6.9	0.0	7.2	0.0
MONROE	29.4	9.8	39.2	9.8	20.2	0.0	0.0	31.9	21.7	0.0	11.7	12.2	12.3	0.0	0.0	0.0	0	0.0
PHILLIPS	7.3	14.6	7.3	0.0	0.0	8	4.1	8.2	0.0	0.0	0.0	4.8	0.0	4.6	0.0	0.0	0	0.0
PRAIRIE	0.0	0.0	21.3	10.5	0.0	0.0	0.0	0.0	0.0	0.0	0.0	0.0	0.0	0.0	0.0	11.0	0	0.0
ST. FRANCIS	17.8	21.3	103	17	34.3	24.3	14	10.6	3.5	7.4	7.6	7.6	3.5	0.0	0.0	0.0	7.4	0.0
Southeast Region Rate	7.4	11.5	18.9	8.3	8.7	7.5	4.1	5.1	3.3	3.2	2.6	2.9	4.0	4.8	2.3	3.4	3.1	1.3

State Rate	7.9	6.7	7.1	7.8	6.1	5	4.7	4.8	4.1	3.6	3.7	2.9	2.7	2.9	2.4	2.4	3.1	3.0
-------------------	------------	------------	------------	------------	------------	----------	------------	------------	------------	------------	------------	------------	------------	------------	------------	------------	------------	------------

**Table 11: TB Case Rates By County, Southwest Region,
Arkansas, 1998-2015**

Rate = Cases per 100,000 Population

Counties	1998	1999	2000	2001	2002	2003	2004	2005	2006	2007	2008	2009	2010	2011	2012	2013	2014	2015
CALHOUN	0	0	17.5	17.4	0	0	0	18.1	17.4	0	0	0	0.0	0.0	17.4	0.0	0	19.1
CLARK	9.1	4.6	13.7	4.2	4.3	8.5	4.2	8.7	0	8.5	4.2	8.4	0.0	0.0	8.5	0.0	4.4	4.4
COLUMBIA	31.9	16	0	15.6	11.7	0	20	8.1	11.7	16.4	8.3	4.2	4.1	4.1	0.0	0.0	4.2	4.1
DALLAS	11	11	0	0	11.1	0	11.5	0	0	0	0	12.5	0.0	0.0	0.0	0.0	0	0.0
HEMPSTEAD	0	0	0	0	4.2	0	4.3	4.3	0	21.5	0	4.3	4.4	0.0	4.2	4.4	13.4	22.6
HOT SPRING	10.3	0	0	0	0	0	3.3	13.1	3.1	6.3	0	0	0.0	0.0	3.3	3.0	0	0.0
HOWARD	36.4	14.6	0	21	14	28.1	6.9	6.9	14	7.1	7.1	0	7.3	0.0	7.0	0.0	7.4	37.6
LAFAYETTE	0	0	0	11.7	24.1	0	0	0	0	12.9	13	13.3	0.0	0.0	0.0	0.0	14.0	14.3
LITTLE RIVER	7.6	7.6	0	7.3	22	0	22.5	0	0	0	0	0	0.0	7.6	7.3	0.0	16	0.0
MILLER	5	7.5	7.5	7.4	4.9	4.9	2.4	2.4	7.3	7	11.6	0	6.9	4.6	0.0	2.3	0	4.6
MONTGOMERY	0	0	0	0	0	10.8	0	0	0	0	0	0	0.0	0.0	0.0	0.0	0	0.0
NEVADA	0	0	0	20.1	0	0	0	0	10.7	0	32.8	10.9	0.0	0.0	0.0	0.0	0	0.0
OUACHITA	17.9	7.2	7.2	6.9	7.1	7.2	3.6	0	3.6	7.7	3.9	0	0.0	3.8	0.0	8.0	0	0.0
PIKE	9.4	28.3	18.9	0	26	9	9	0	8.3	0	0	0	0.0	26.6	0.0	0.0	0	0.0
POLK	0.0	0.0	0.0	0.0	4.9	0	4.9	5	0	0	0	4.9	0.0	0.0	0.0	0.0	0	4.9
SEVIER	0	41	6.8	0	6.3	19	37.8	12.4	18.7	0	18.2	0	11.7	17.6	0.0	17.3	5.7	0.0
UNION	8.8	17.7	24.3	6.6	6.6	8.8	6.7	2.2	4.5	0	4.6	2.3	2.4	4.8	4.4	0	5.0	0.0
Southwest Region Rate	9.8	10.1	7.1	6.8	7.5	5.7	7.8	4.8	6.2	6.1	5.8	2.7	2.7	3.9	2.7	2.8	4.3	5.3

State Rate	6.7	7.1	7.8	6.1	5	4.7	4.8	4.1	3.6	3.7	2.9	2.8	2.7	2.9	2.4	2.4	3.1	3.0
-------------------	------------	------------	------------	------------	----------	------------	------------	------------	------------	------------	------------	------------	------------	------------	------------	------------	------------	------------

Table 12: Foreign-Born TB Cases, Arkansas, 2003-2015

Year	2003	2004	2005	2006	2007	2008	2009	2010	2011	2012	2013	2014	2015
Total Cases	127	132	114	102	106	83	82	78	85	70	72	93	90
Proportion Foreign-born (%)	18.9	36.4	29	31.4	29.2	22.9	28	30.8	28.2	32.9	33.3	37.6	34.4
Total Foreign-Born Hispanic by Country	9	19	22	19	15	9	11	9	6	8	10	8	10
By Country													
Mexico	9	16	18	15	15	7	6	7	4	6	5	7	3
El Salvador			3	2		1	4	2					1
Peru													
Guatemala						1	1		1	1	1	1	4
Ecuador		1											
Puerto Rico		1									1		
Honduras			1	1							2		2
Nicaragua		1											
Costa Rica											1		
Venezuela				1									
Chile									1				
Brazil										1			
Total Foreign-Born non-Hispanic	13	29	11	11	16	10	12	15	18	15	14	27	21
Philippines		2		2	1	1	1		1	1	1		1
Vietnam	4	3	1	2	2	1		2	6	1		3	3
India	1	2	2		3	1	2	2	2	4	3	2	
Marshall Islands	7	19	5	5	5	4	6	6	5	4	5	17	13
China				1							1	1	1
Laos	1	2	1				1	3		2		2	
Nigeria												1	
Cambodia										1			
Nepal		1			4	1					1		
Pakistan										1			
Gabon												1	
Korea	1					1			2		1		
Thailand				1	1					1			
Malawi													1
Ukraine						1							
Indonesia													1
US Pacific Islands	1												
Bangladesh			1	1			1						1
Zimbabwe			1										
Senegal				1									
Kazakhstan							1						
Taiwan								1					
Zambia								1			1		
Rwanda									2			1	
Total Foreign-Born	24	48	33	32	31	19	23	24	24	23	24	35	31